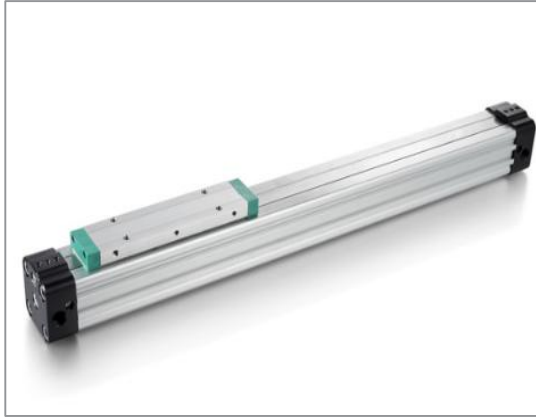
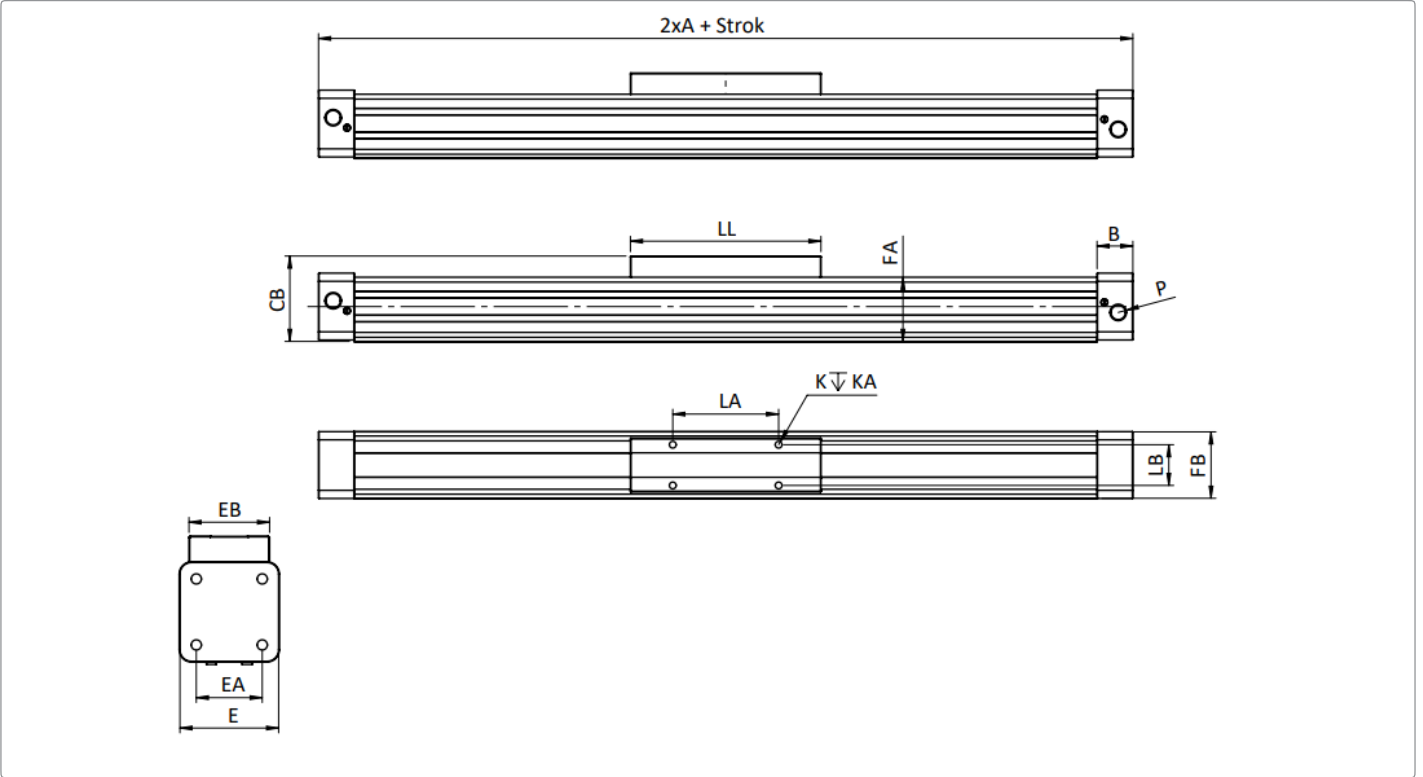


WOSP- Serisi ISO 6432 Silindirler / WOSP- Series ISO 6432 Cylinders

Özellikler / Specification

| | |
|---|---|
| Piston Çapı / Bore Size | 50-63-80 |
| Çalışma Tipi / Acting Type | Çift Etkili / Double Acting |
| Akışkan / Fluid | Hava (40µm filtrelenmiş) / Air (40µm filtered) |
| Çalışma Basıncı / Op. Pressure | 0.1 ~ 0.8 MPa |
| Sıcaklık / Temperature | -5 ~ +60 °C |
| Manyetik / Magnetic | Opsiyonel / Optional |
| Hız / Speed Range | 100~1500mm/s |
| Strok Hassasiyeti / Stroke Tolerance | ≤1000 +1,5 ≥1000 +2,0 |

Teknik Çizim / Technical Drawing


| Ø | A(mm) | B(mm) | CB(mm) | E(mm) | EA(mm) | EB(mm) | FA(mm) | FB(mm) | LA(mm) | LB(mm) | LL(mm) | K (M) | KA(mm) | P (G) |
|----|-------|-------|--------|-------|--------|--------|--------|--------|--------|--------|--------|-------|--------|-------|
| 50 | 175 | 33 | 92.5 | 87 | 70 | 36 | 77 | 76 | 110 | 27 | 200 | 6 | 10 | 1/4" |
| 63 | 215 | 38 | 117 | 106 | 78 | 50 | 96 | 96 | 140 | 34 | 256 | 8 | 16 | 3/8" |
| 80 | 260 | 47 | 147 | 132 | 96 | 52 | 122 | 122 | 190 | 36 | 348 | 10 | 20 | 1/2" |

Sipariş Kodu / Ordering Code

| Ürün Kodu / Specification Code | Silindir Çap Bilgisi / Cylinder Diameter Code | Strok Bilgisi / Stroke | Bağlantı Dış Bilgisi / Connection Pipe Diameter |
|--|--|---|--|
| WOSP : Yüksek hızlı Milsiz Silindir | Ø50, Ø63, Ø80 | Ø50 → 5520 mm Ø63 → 5450 mm Ø80 → 4878 mm | Ø50 → G1/4 Ø63 → G3/8 Ø80 → G1/2 |