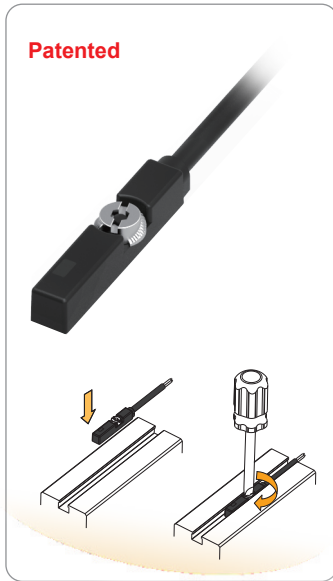
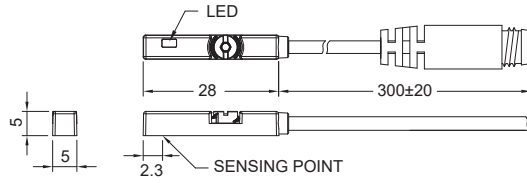


Winman WT-65 Serisi / WT-65 Series

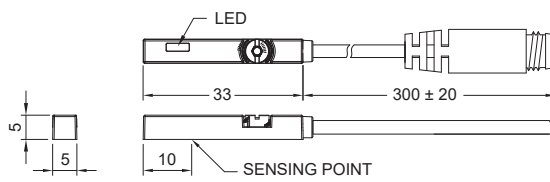


Boyutlar / Dimensions

WT-65D, WT-65DE, WT-65N, WT-65NE, WT-65P, WT-65PE /
WT-65D-QD, WT-65DE-QD, WT-65N-QD, WT-65NE-QD,
WT-65P-QD, WT-65PE-QD



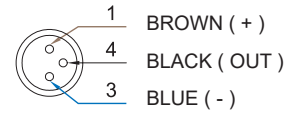
WT-65R, WT-65RP / WT-65R-QD, WT-65RP-QD



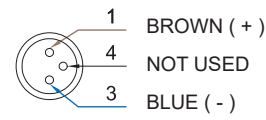
Unit : mm

Pin Yapısı / QD Pinout

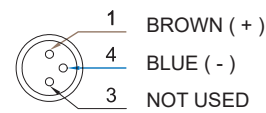
• **3 wire QD wiring**



• **2 wire QD wiring**



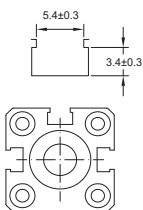
• **2 wire EQD wiring**



Model	WT-65R	WT-652R	WT-65DE	WT-65N	WT-65NE	WT-65P	WT-65PE	WT-65RP
Connect Diagram								
Characteristics	2-Wire Type		3-Wire Type					
Switching Logic	SPST, Normally Open	Solid State Output, Normally Open					SPST, Normally Open	
Sensor Type	Reed Switch	-	NPN Current Sinking		PNP Current Sourcing		Reed Switch	
Operating Voltage	5 ~ 240 V DC / AC	10 ~ 28 V DC	5 ~ 30 V DC	10 ~ 28 V DC	5 ~ 30 V DC	10 ~ 28 V DC	5 ~ 30 V DC	10 ~ 30 V DC / AC
Switching Current	100 mA max.	50 mA max.		200 mA max.				500 mA max.
Contact Rating *1	10 W max.	1.5 W max.		5.5 W max.	6 W max.	5.5 W max.	6 W max.	10 W max.
Current Consumption	-		10 mA @ 24 V DC max.	6 mA @ 24 V DC max.	10 mA @ 24 V DC max.	6 mA @ 24 V DC max.	10 mA @ 24 V DC max.	
Voltage Drop	3.0 V max.	3.5 V max.	3.7 V max.	1.5 V max.	0.5V @ 200mA max.	1.5 V max.	0.5V @ 200mA max.	0.1 V @ 100 mA max.
Leakage Current	-	0.8 mA max.	0.1 mA (40 uA) max.	0.05 mA max.	0.01 mA max.	0.05 mA max.	0.01 mA max.	-
Indicator	Red LED					Yellow LED		
Cable	Ø2.8, 2C, PUR				Ø2.8, 3C, PUR			
Operating Frequency	200 Hz	1000 Hz max.						
Magnet Requirement *2	75 Gauss	50 Gauss	40 ~ 1000 Gauss	50 Gauss	40 ~ 1000 Gauss	50 Gauss	40 ~ 1000 Gauss	65 Gauss
Temperature Range	-10 ~ 70 °C							
Shock *3	30 G		50 G				30 G	
Vibration *4	9 G							
Enclosure Classification	IEC 60529 IP67							
Protection Circuit *5	1	2, 4	3, 4	2, 3, 4	3, 4	2, 3, 4	3, 4	1

NOTE:
 *1 : WARNING : Never exceed rating (Watt = Voltage x Amperage). Permanent damage to sensor will occur.
 *2 : Measuring standard target : ø15.5 × ø8 × 5t (Anisotropy rubber magnet)
 *3 : Sin wave / X , Y , Z 3 directions / 3 times each direction / 11 ms each time.
 *4 : Double amplitude 1.5 mm / 10 Hz ~ 55 Hz ~ 10 Hz (Sweep 1 min) / X , Y , Z 3 directions / 1 hour each time.
 *5 : 1 = None / 2 = Short-circuit / 3 = Power Source Reverse polarity / 4 = Surge Suppression

Groove Dimensions | Clamp / Bracket



Unit : mm