

Sipariş Kodu / Ordering Code

WMZD - BS -

1	2	3	4	5	6	7	8
Model Model	Tahrik Birimi Drive Unit	Boyut Size	Strok Stroke	Hatve Pitch	Bağlantı Kiti Modeli Mounting Kit Model	Bağlantı Kiti Montaj Mounting Kit Assembly	Bağlantı Kiti Yönü Mounting Kit Side

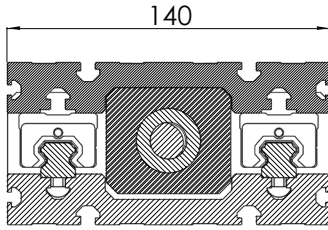
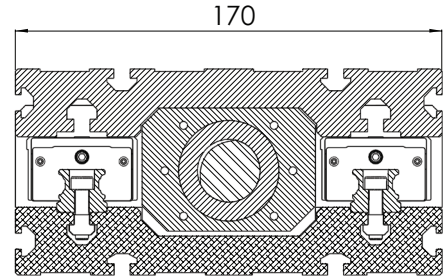
1 - Model / Model

WMZD : Tabla Lineer Modül / Table Linear Module

2 - Tahrik Birimi / Drive Unit

BS : Vidalı Mil / Ball Screw

3 - Boyut / Size


WMZD - BS - 140

WMZD - BS - 170

4 - Strok / Stroke

WMZD - 140	0000 : Maksimum 1200 mm / Maximum 1200 mm
WMZD - 170	0000 : Maksimum 1600 mm / Maximum 1600 mm

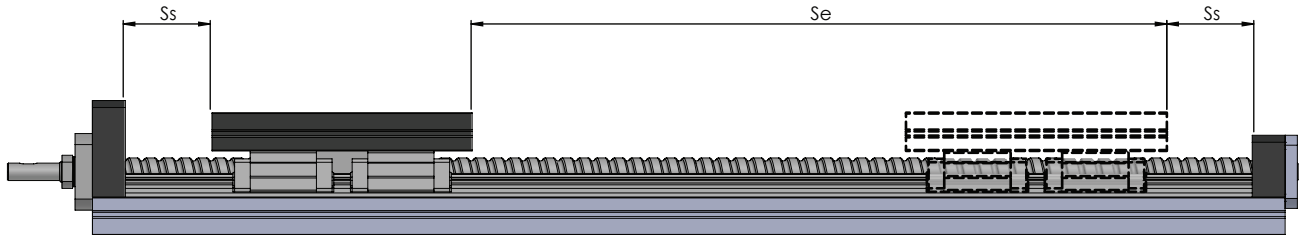
Hareket Stroku / Movement Stroke

İstenilen çalışma strokuna ek olarak 2xHatve kadar her iki tarafta da boşluk bırakılması tavsiye edilir.
In addition to the desired movement stroke, it is recommended to leave a space on both sides until 2xPitch.

$$S_m = S_e + 2.S_s$$

$$S_s = 2.p$$

S_m : Hareket Stroku / Movement Stroke
 S_e : Etkin Hareket Stroku / Safety Stroke
 p : Vidalı Mil Hatvesi / Ball Screw Pitch



5 - Hatve / Pitch

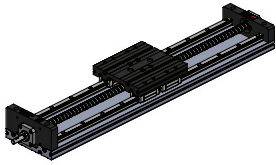
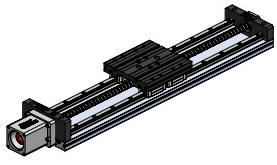
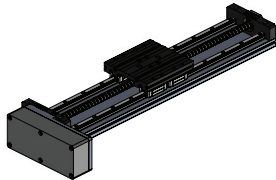
WMZD - 140	WMZD - 170	05 : 5 mm/devir / 5 mm/rev
		10 : 10 mm/devir / 10 mm/rev
		50 : 50 mm/devir / 50 mm/rev

Sipariş Kodu / Ordering Code

WMZD - BS - - - - -


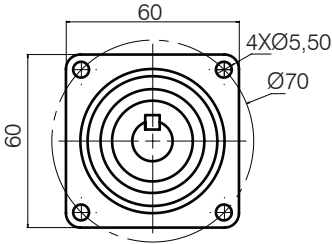
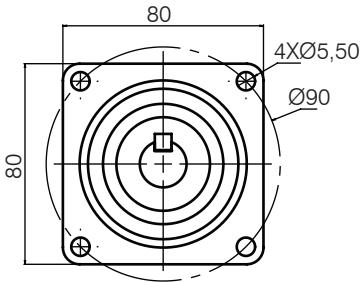
1	2	3	4	5	6	7	8
Model Model	Tahrik Birimi Drive Unit	Boyut Size	Strok Stroke	Hatve Pitch	Bağlantı Kiti Modeli Mounting Kit Model	Bağlantı Kiti Montaj Mounting Kit Assembly	Bağlantı Kiti Yönü Mounting Kit Side

6 - Bağlantı Kiti Modeli / Mounting Kit Model

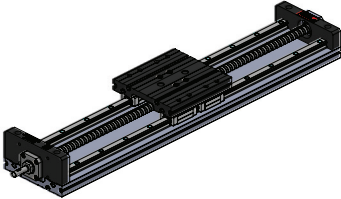
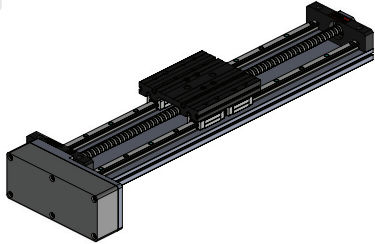
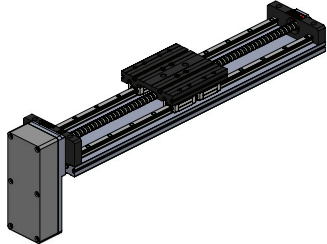
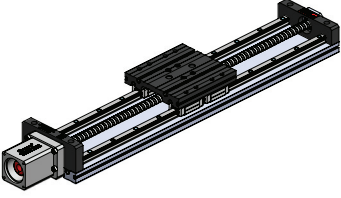
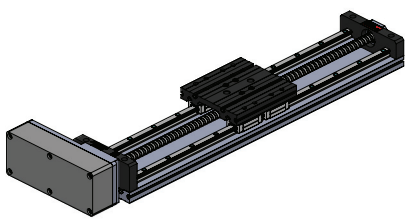
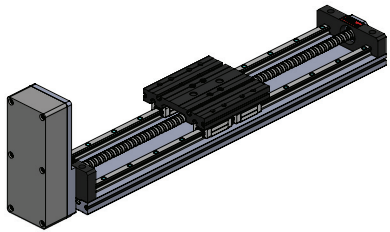
		
00 : Bağlantı Kitsiz Without Mounting	WDAK : Eksenel Kit Axial Kit	WDPK : Paralel Kit Parallel Kit

Not 1 : Farklı motor tipleri ve ölçüleri için irtibata geçiniz. *Note 1 : Please contact for different motor types and mounting sizes.*
 Not 2 : Redüktörlü ürünler kullanmak için irtibata geçiniz. *Note 2 : Please contact for to use reducer.*

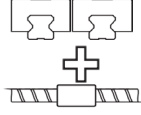
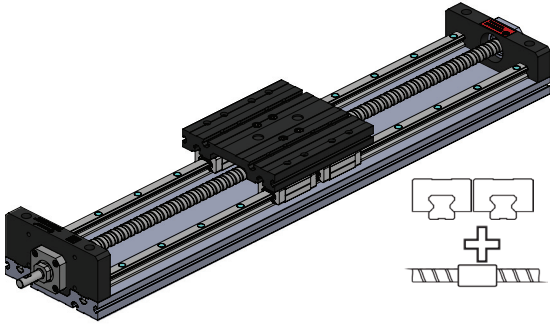
7 - Bağlantı Kiti Montaj / Mounting Kit Assembly

		
00 : Motorsuz Without Motor	070 : Ø70 motor bağlantısı Ø70 motor mounting	090 : Ø90 motor bağlantısı Ø90 motor mounting

8 - Bağlantı Kiti Yönü / Mounting Kit Side

WINMAN WMZD Serisi Tabla Lineer Modüller / WMZD Series Table Linear Modules



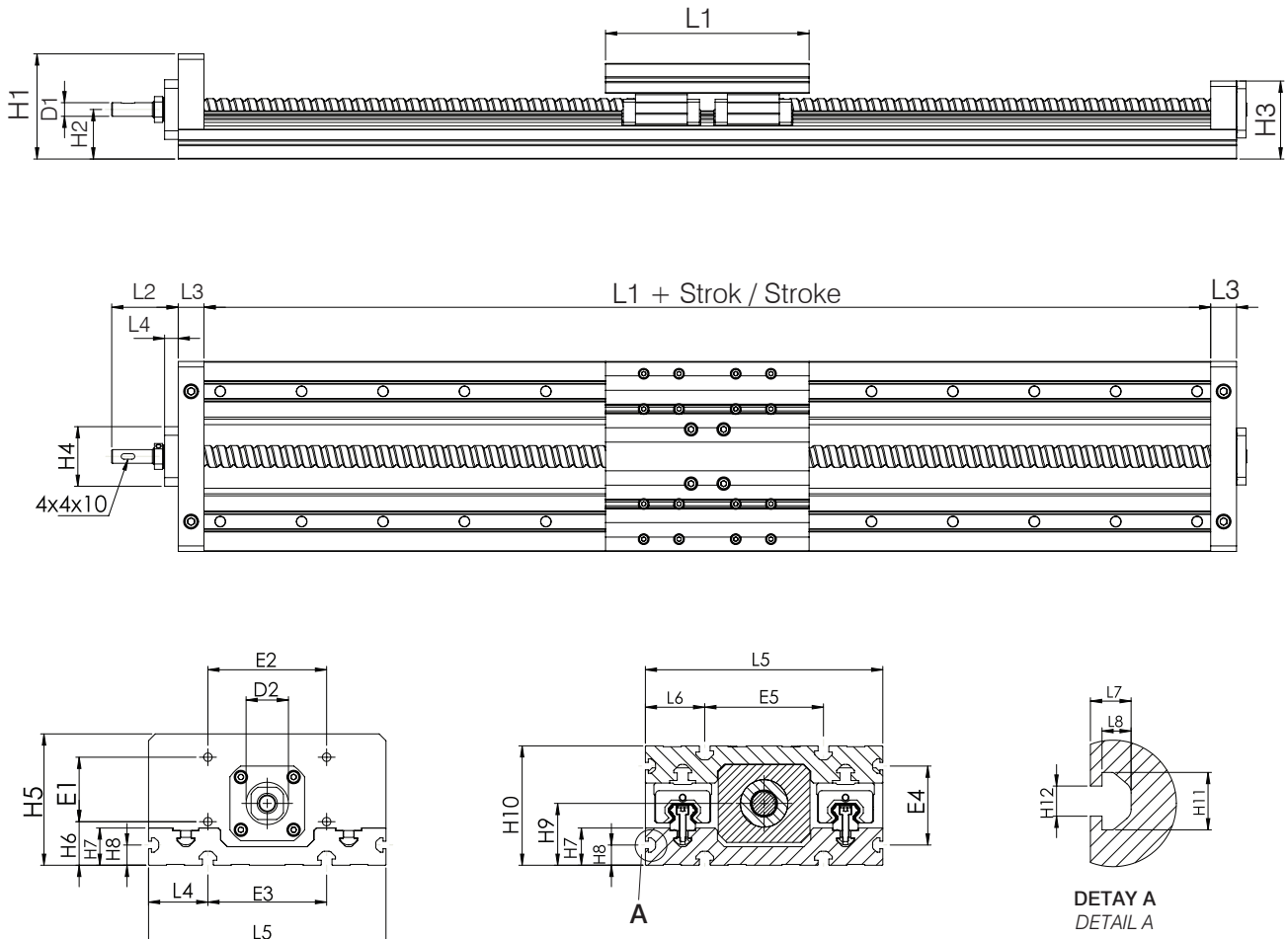
Özellikler / Specification

Modül Tipi / Module Type			WMZD-140	WMZD-170
Statik Yük / Static Load	Co	kN	55,2	97,2
Dinamik Yük / Dynamic Load	C	kN	34,0	56,4
Maximum Strok / Maximum Stroke		mm	1500	1500
Pozisyonlama Hassasiyeti / Position Accuracy		$\mu\text{m}/\text{mm}$	53/300	53/300
Tekrarlama Hassasiyeti / Repeating Accuracy		mm	< 0,05	< 0,05
İvmelenme Max. / Acceleration		m/s ²	10	10

Not : Verilen değerler teorik değerlerdir. Emniyet kat sayısını 5 almanızı öneririz.

Note : Calculated value are theoretical values. We recommend you to calculate safety factor as five(5).

Teknik Çizim / Technical Drawing

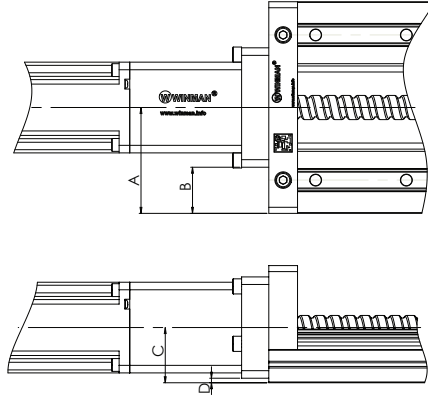
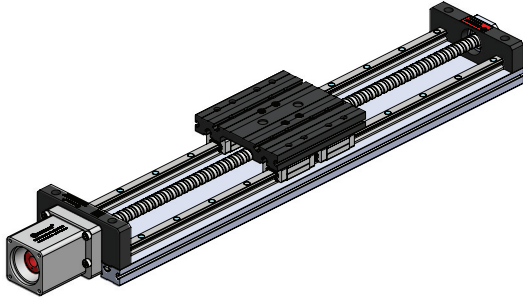


Modül Tipi Modul Type	D1	D2	E1	E2	E3	E4	E5	H1	H2	H3	H4	H5	H6	H7
WMZD 140	10	25	38	70	70	46,5	70	77,5	36,5	57,5	44	77,5	25,5	22
WMZD 170	12	28	38	80	85	55	85	84,5	41,5	67,5	52	84,5	31,5	27

Modül Tipi Modul Type	H8	H9	H10	H11	H12	L1	L2	L3	L4	L5	L6	L7	L8
WMZD 140	12	36,5	70,5	8,45	6,40	150	49	19	10	140	35	6	4,3
WMZD 170	13,5	41,5	82	12	6,40	200	58	19	15	170	42,5	8	5,6

WDAK Eksenel Bağlantı Kiti / WDAK Axial Mounting Kit

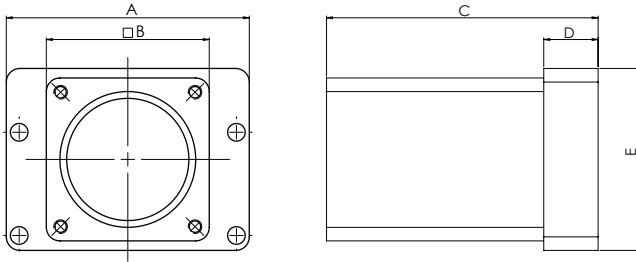
Teknik Çizim / Technical Drawing



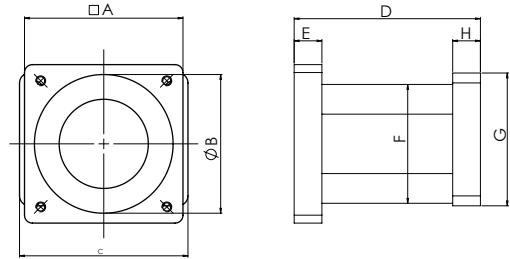
Modül Tipi Module Type	Bağlantı Kiti Montaj Mounting Kit Assembly	A	B	C	D
WMZD 140	WDAK - 070	70	30,5	36,5	3
	WDAK - 090	70	30,5	36,5	3
WMZD 170	WDAK - 070	85	40,25	41,5	3
	WDAK - 090	85	40,25	41,5	3

Kampana / Bellhousing

WDAK - 070

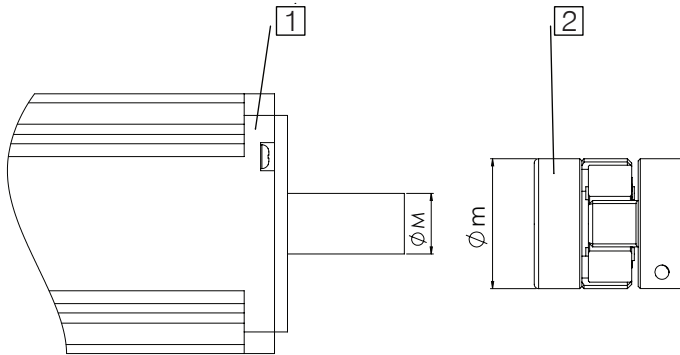


WDAK - 090



Modül Tipi Module Type	A	B	C	D	E	Modül Tipi Module Type	A	B	C	D	E	F	G	H
WMZD 140	79	60	92	18	67	WMZD 140	80	70	85	94	14	60	67	14
WMZD 170	89,5	60	100	20	67	WMZD 170	80	70	89,5	103	25	60	80	14

Kaplin / Coupling



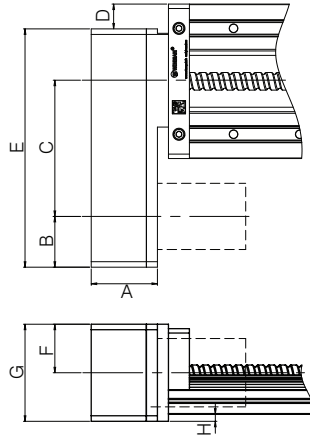
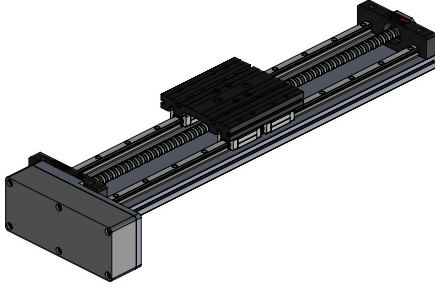
- 1 - Motor / Motor
2 - Kaplin / Coupling

Motor Tipi Motor Type	M	m	Kaplin Modeli Coupling Model
WDAK-070	14	30	WWJCL - 30CRD
WDAK-090	19	40	WWJCL - 40CRD

WINMAN WDPK Paralel Bağlantı Kiti / WDPK Parallel Mounting Kit

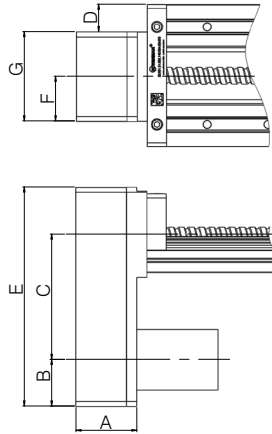
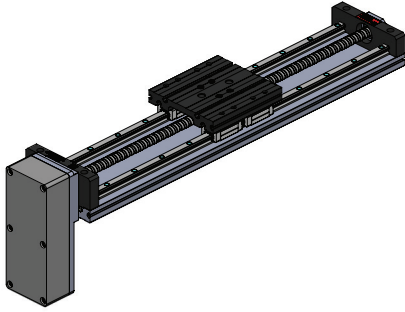
Teknik Çizim / Technical Drawing

WDPK - _ _ - 01



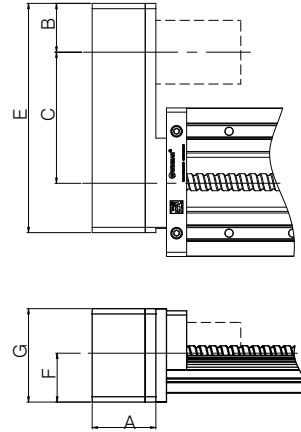
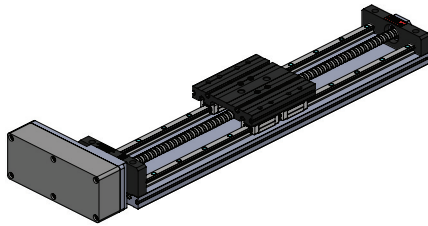
Modül Tipi Module Type	WMZD - 140		WMZD - 170	
Kit Montaj Kit Assembly	WDPK - 070 - 01	WDPK - 090 - 01	WDPK - 090 - 01	WDPK - 090 - 01
A	60	70	70	80
B	46	50	40	50
C	122,5	186	142	186
D	22,5	25	35	35
E	216	297	235	297
F	45	43	50	50
G	88	88	100	100
H	6,5	24,5	11,5	19,5

WDPK - _ _ - 02



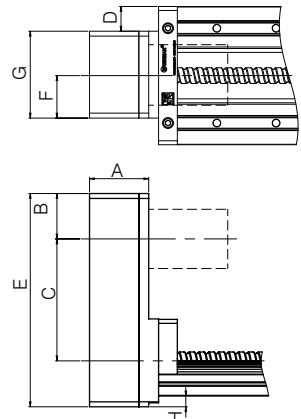
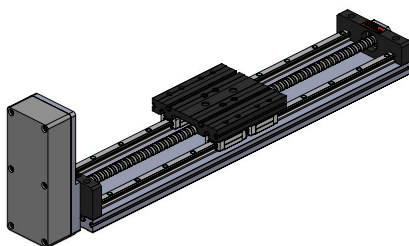
Modül Tipi Module Type	WMZD - 140		WMZD - 170	
Kit Montaj Kit Assembly	WDPK - 070 - 01	WDPK - 090 - 01	WDPK - 090 - 01	WDPK - 090 - 01
A	60	70	70	80
B	46	50	40	50
C	122,5	186	142	186
D	25	25	32	24
E	216	297	235	297
F	43	43	50	50
G	88	88	100	100
H	-	24,5	-	-

WDPK - _ _ - 03



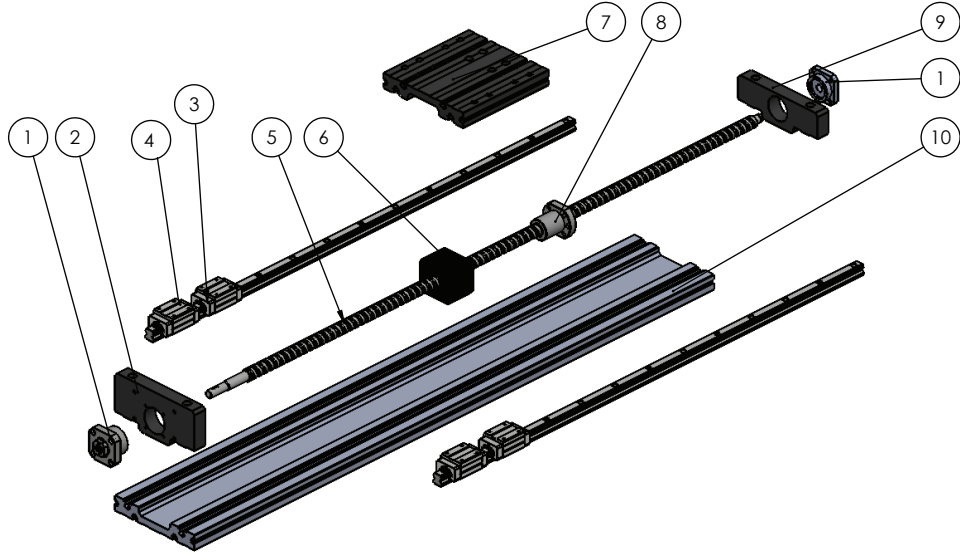
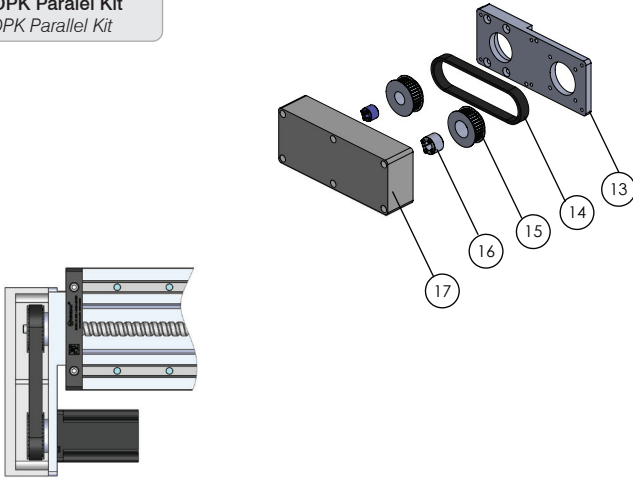
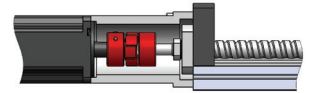
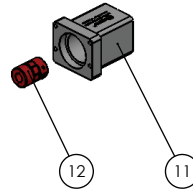
Modül Tipi Module Type	WMZD - 140		WMZD - 170	
Kit Montaj Kit Assembly	WDPK - 070 - 01	WDPK - 090 - 01	WDPK - 090 - 01	WDPK - 090 - 01
A	60	70	70	80
B	46	50	50	50
C	122,5	186	186	186
D	25	20	20	35
E	216	297	297	297
F	45	50	50	50
G	88	100	100	100
H	11	24,5	24,5	19,5

WDPK - _ _ - 04



Modül Tipi Module Type	WMZD - 140		WMZD - 170	
Kit Montaj Kit Assembly	WDPK - 070 - 01	WDPK - 090 - 01	WDPK - 090 - 01	WDPK - 090 - 01
A	60	70	70	80
B	46	50	40	50
C	122,5	186	142	186
D	22,5	9	32	24
E	216	297	235	297
F	43	43	50	50
G	88	88	100	100
H	8,5	5	20	10

Montaj / Assembly

 WMZD Lineer Modül
 WMZD Linear Module

 WDPK Paralel Kit
 WDPK Parallel Kit

 WDAK Eksenel Kit
 WDAK Axial Kit


Parça Piece	Miktar Qty	Parça Adı Part Name	Montaj Assembly
1	2	Mil Ucu Yatağı / Ball Screw Bearing	Modül Module
2	1	Ön Kapak / Front Block	
3	2	Lineer Ray / Linear Guide	
4	4	Lineer Araba / Linear Carriage	
5	2	Vidalı Mil / Ball Screw	
6	4	Vidalı Somun Yatağı / Ball Nut Bearing	
7	1	Bağlantı Plakası / Mounting Plate	
8	1	Vidalı Somun / Ball Nut	
9	1	Arka Kapak / Back Block	
10	1	Profil / Profile	
11	1	Kampana / Bellhousing	Eksenel Kit Axial Kit
12	1	Kaplin / Coupling	Paralel Kit Parallel Kit
13	1	Paralel Kit Kapak / Parallel Kit Cover	
14	1	Dişli Kayış / Toothed Belt	
15	2	Dişli Kasnak / Timing Belt Pulleys	
16	2	Konik Burç / Traper Bushing	
17	1	Paralel Kit Kutusu / Parallel Kit Box	

Bakım / Maintenance

- İlk yağlama üretim sırasında yapılır.

Basic lubrication is done in-factory before shipment.

- Vidalı milin vidalı mili yataklayan rulmanlar, normal çalışma koşullarında tekrardan yağlama gerektirmez.

Bearings of the ball screw have been lubricated for life and will not require in-service lubrication under normal operating conditions.

- Vidalı mil (1) nipel kullanmadan doğrudan yağlanır.

Ball screw (1) is lubricated without nipple, grease is applied directly ball screw.

- Lineer arabalar yağlama nipelini (2) kullanılarak yağlanır.

Linear carriages are lubricated via nipple (2).

- Tabla modüller sadece uygun gres ile yağlanmalıdır.

Table modules must be lubricated with suitable grease.

- Lityum içerikli gres yağlar kullanılmalıdır.

Lithium soap grease should be used.

- Dikkat: grafit ya da MoS içeren gresler tercih etmeyiniz!

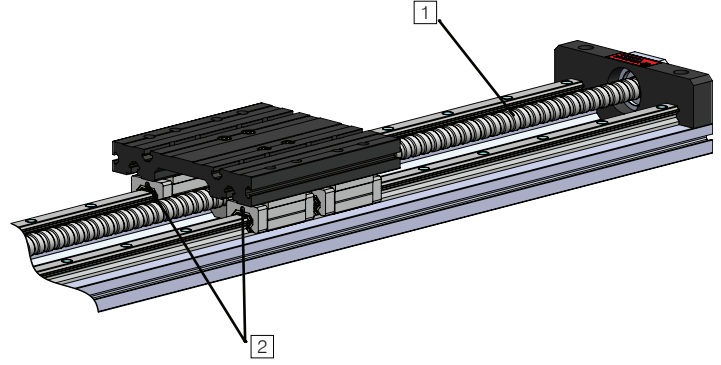
Caution: Do not use grease containing graphite or MoS!

- Yağlama, her 400 çalışma saatinde ya da 400km çalışma mesafesine ulaşıldığında yapılır.

Lubrication is performed every 400 hours or 400 km total working distance by normal operating conditions.

- Yağlama miktarları normal çalışma koşullarına göre tabloda verilmiştir.

Lubrication quantities are provided in table by normal operating conditions.



Normal Çalışma Koşulları / Normal Working Conditions

Ortam Sıcaklığı / Ambient Temperature		°C	10 ~ 40
Çalışma Hızı / Speed		m/s	≤ 1,0
Vidalı Mil Dönme Hızı /Screw Rotation Speed		rev/min	2500
Yük / Load		kN	≤ 0,2 C
Strok / Stroke		mm	> 60
Yağlama Periyodu /Lubrication Period		Km	400
		Hour	400
1 Vidalı Mil Yağlama Miktarı Ball Screw Lubricate Dose	WMZD - 140	cm ³	2,2
	WMZD - 170	cm ³	4,2
2 Lineer Yataklama Yağlama Miktarı Linear Carriage Lubricate Dose	WMZD - 140	cm ³ /port	0,4
	WMZD - 170	cm ³ /port	0,6