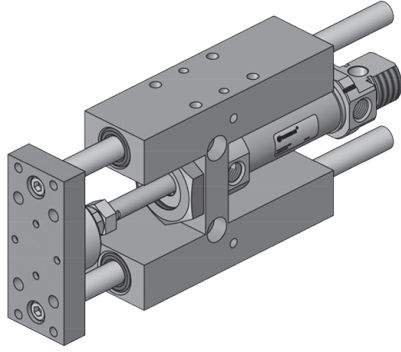


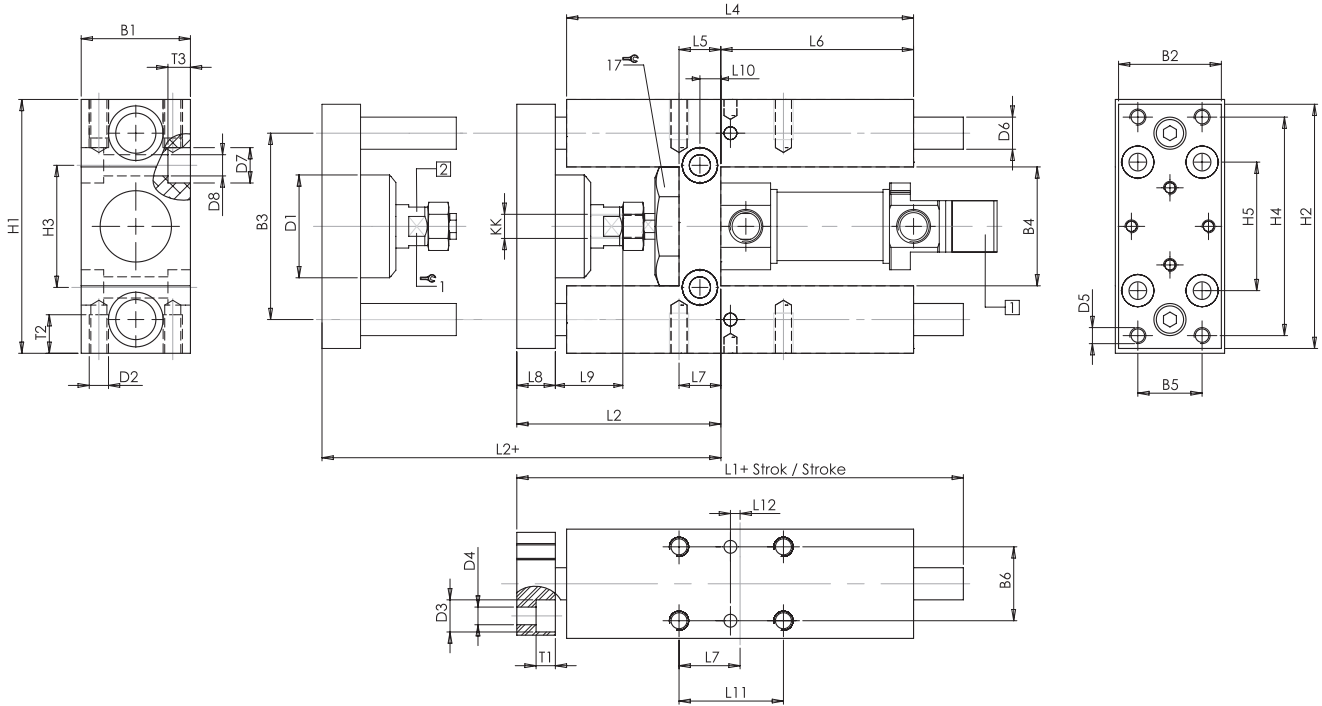
## WHC - ISO 6432 İçin Yataklama / WHC - ISO 6432 Guides



## Özellikler / Specification

Piston Çapı / Bore Size	20	25
Sıcaklık / Temperature	-20 ~ +80 °C	
Hız / Speed Range	< 800 mm/s	

## Teknik Çizim / Technical Drawing



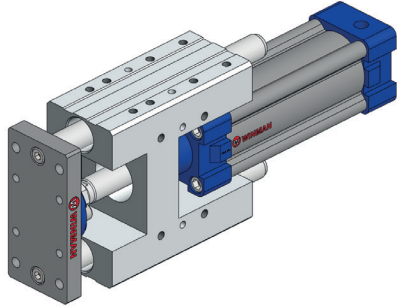
- 1 ISO 6432 Silindir / ISO 6432 Cylinder  
2 Kompanzator Kaplin / Compensator Coupling

Ø mm	B1 -0.3	B2	B3 -0.2	B4	B5	B6	D1 Ø	D2	D3 Ø	D4 Ø	D5	D6 Ø	D7 Ø	D8 Ø	H1 ±0.4	H2	H3 ±0.2	H4	H5	KK	L1	L2 +5	L4	L5	L6	L7	L8	L9	L10	L11 ±0.2	L12 ±0.1	11	12	13	1	2
20	34	32	57	36	20	23	32	M6	10	5.50	M5	10	11	6.60	78	76	38	68	40	M8	139	63	108	13	60	18	12	20	6.50	32.50	3.0	6.0	14	7.0	12	32
25	34	32	57	36	20	23	32	M6	10	5.50	M5	10	11	6.60	78	76	38	68	40	M10X1.25	139	65	108	17	58	19	12	20	8.50	32.50	3.0	.0	14	7.0	12	32

## Sipariş Kodu / Ordering Code

MODEL	YATAKLAMA GUIDING	ÇAP DIA	STROK STROKE
WHC	R	025	0100
H TİPİ YATAKLAMA H Type Guiding	R :RULMAN YATAKLAMALI Bearing Guide B :BURÇ YATAKLAMA Bushing Guide	PİSTON ÇAP (mm) Piston Dia	STROK (mm) Stroke

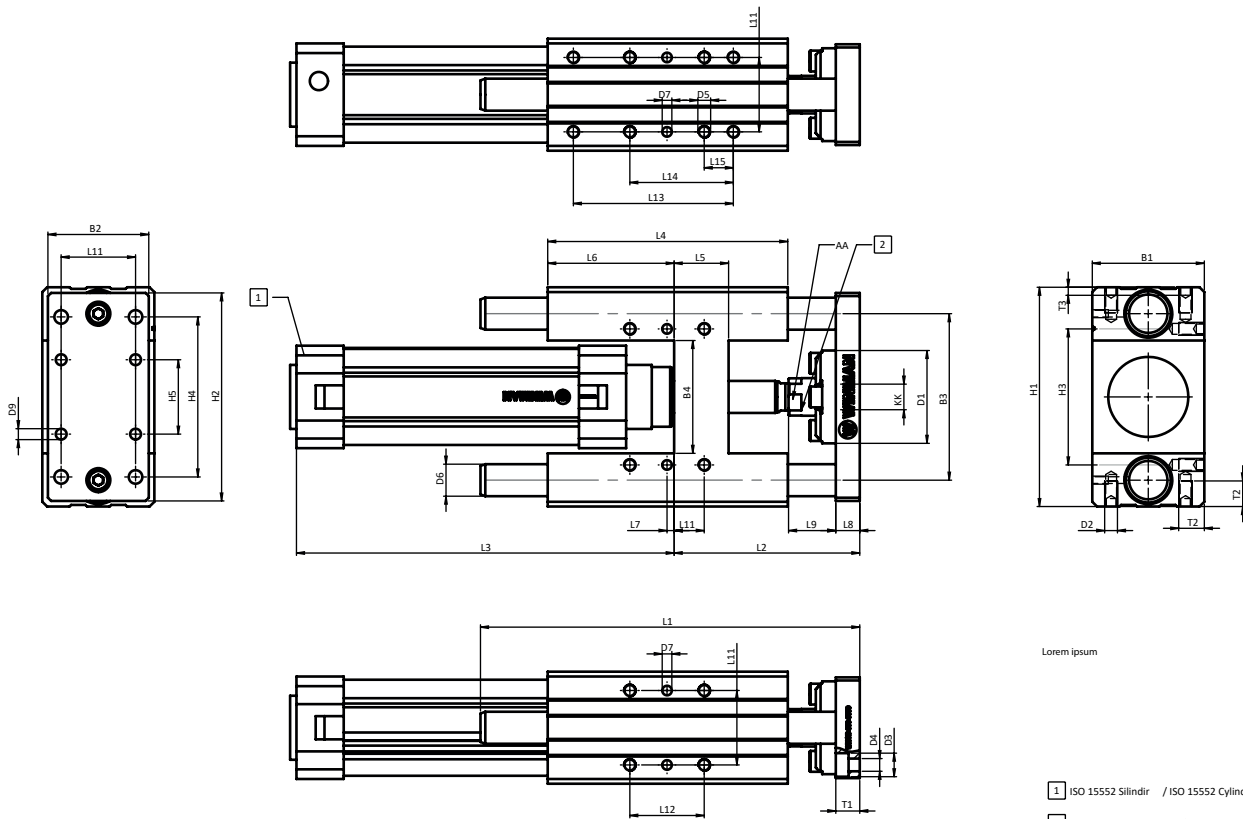
## WHC - Serisi ISO 15552 için Yataklamalar / WHC- Series Guides For ISO 15552



## Özellikler / Specification

Piston Çapı / Bore Size	32	40	50	63	80	100
Sıcaklık / Temperature	-20 ~ +80 °C					
Hız / Speed Range	< 800 mm/s					

## Teknik Çizim / Technical Drawing



Ø mm	B1 -0.3	B2	B3 -0.3	B4	D1 Ø	D2	D3 Ø	D4 Ø	D5	D6 Ø	D7 ±1	L6	L7	L8	L9	L11 ±0.2	L12 ±0.2	L13 ±0.22	L14 ±0.2	L15 ±0.2	T1	T2	T3	H1	H2	H3 ±0.2	H4 ±0.2	H5 ±0.2	KK	L1	L2	L3	L4	L5	AA
32	50	45	74	50.0	42	M6	11	6.6	M6	12	4	76	11.0	12	20	4.30	32.5	78.0	40.2	7.7	6	10.0	5	97.0	95.0	61.0	78.0	32.5	M10X1.25	159.0	67+5	94.0	125.0	24.0	15.0
40	58	54	87	58.5	42	M6	11	6.6	M6	16	6	81	8.0	12	20	11.0	38.0	84.0	38.0	-	7	12.0	5	115.0	110.0	69.0	84.0	38.0	M12X1.25	169.0	75+5	105.0	140.0	28.0	15.0
50	70	63	104	70.5	58	M8	15	8.5	M8	20	6	79	4.5	15	29	18.8	46.5	100.0	64.7	-	8	15.0	5	137.0	130.0	85.0	100.0	46.5	M16X1.5	187.0	89+10	106.0	150.0	34.0	21.0
63	85	80	119	85.5	58	M8	15	8.5	M8	20	6	111	13.0	15	29	15.3	56.5	105.0	56.5	18.0	8	16.0	5	152.0	145.0	100.0	105.0	56.5	M16X1.5	222.0	89+10	121.0	182.0	34.0	21.0
80	105	100	148	106.0	78	M10	18	11.0	M10	25	8	128	15.0	20	32	-	72.0	-	72	-	11.0	25.0	8	189.0	180.0	130.0	130.0	72.0	M20X1.5	258.0	111+10	128.0	215.0	34.0	27.0
100	130	130	172	131.0	78	M10	18	11.0	M10	25	8	128	20.0	20	32	24.5	89.0	-	89	-	11.0	25.0	8	213.0	200.0	150.0	150.0	89.0	M20X1.5	263.0	116+10	138.0	220.0	-	27.0

## Sipariş Kodu / Ordering Code

MODEL	YATAKLAMA GUIDING	ÇAĞI DIA	STROK STROKE
WHC	R	050	0100
H TİPİ YATAKLAMA H Type Guiding	R :RULMAN YATAKLAMALI Bearing Guide  B :BURÇ YATAKLAMA Bushing Guide	PİSTON ÇAĞI (mm) Piston Dia	STROK (mm) Stroke