



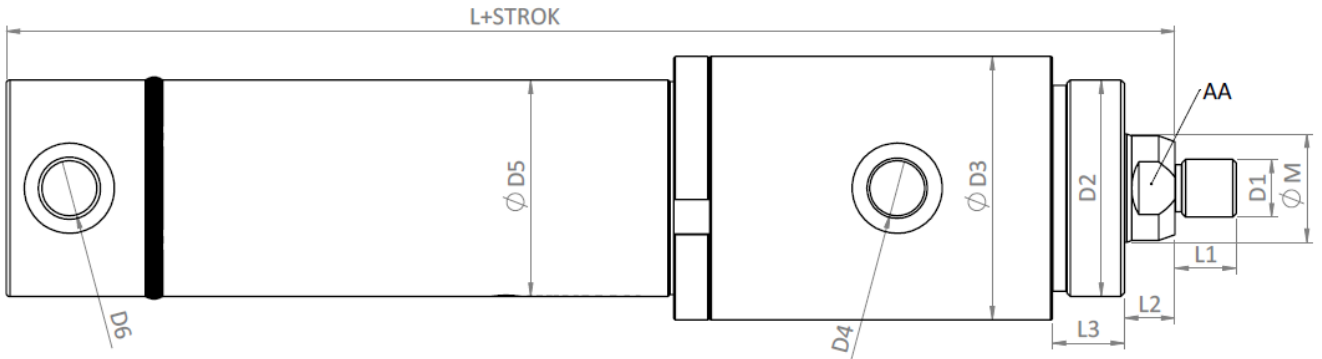
## WINMAN W6 Tipi-Hidrolik Silindir/WINMAN W6 Type Hydraulic Cylinder



## Özellikler / Specification

Maksimum Strok Uzunluğu/Maximum Stroke [mm]	1500
Optimum Viskozite/Optimum Viscosity	20 mm <sup>2</sup> /s - 100 mm <sup>2</sup>
Minimum Çalışma Basıncı /Minimum Working Pressure	10 Bar
Maximum Çalışma Hızı/Maximum Speed [mm/sec.]	0,5 m/s
Çap Ölçüleri/Bore Sizes	40 mm-100 mm
Piston Mili Ölçüleri/Rod Sizes	22 mm-70 mm
Çalışma Sıcaklığı/Worknig Temprature	-20°C'den +80°C'ye
Sızdırmazlık Elemanları/ Sealing Elements	NBR/PU
Kullanılacak Yağ/Oil To Be Used	Mineral Yağ

## Teknik Çizim / Technical



PİSTON ÇAPI	M	AA	D1	D2	D3	D4	Ø D5	D6	L1	L2	L3	L
40	25	21	M16X1,5	M50X2	63	3/8"	50	1/4"	17	13	20	173
50	30	25	M16X1,5	M60X2	73	3/8"	60	3/8"	17	14	20	174
	35	30										
63	30	26	M22X1,5	M75X2	88	1/2"	75	3/8"	23	16	20	178
	35	30										
	40	34										
80	45	41	M35X1,5	M95X2	108	1/2"	95	3/8"	36	18	25	194
	50	46										
100	55	46	M45X1,5	M115X2	127	1/2"	115	1/2"	46	20	25	210
	70	60										

## Sipariş Kodu/Order Code

SİLİNDİR TİPİ CYLINDER TYPE	PİSTON ÇAPI PISTON DÍA.	MİL ÇAPI ROD DÍA.	STROK STROKE	MİL UCU BAĞLANTI ROD END MOUNTING	ÖN BAĞLANTI FRONT MOUN.	ORTA BAĞLANTI MIDDLE MOUN.	ARKA BAĞLANTI REAR MOUN.
W4	40 MM	20 MM	250 MM	P / C	Y / D	O	C / S
W6	40 MM	20 MM	250 MM	P / C	Y / D	O	C / S

WINMAN W6 Tipi Hidrolik Silindir/WINMAN W6 Type Hydraulic Cylinder

Bağlantılı Model Görünümleri/Linked Model Views

Mil Ucu Bağlantı/Rod End Mounting

P TİPİ OYNAR MAFSAL  
P TYPE BALL JOINT

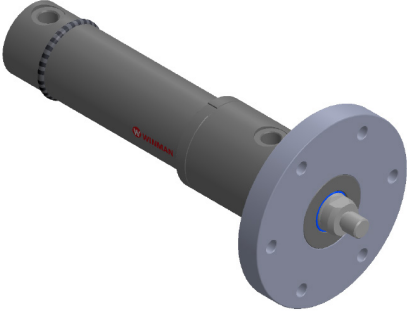


C TİPİ OYNAR MAFSAL  
C TYPE BALL JOINT

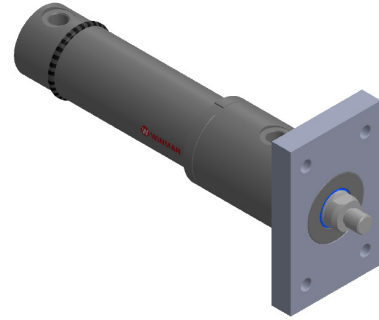


Ön Bağlantı/Front Connection

ÖN YUVARLAK FLANŞLI  
FRONT ROUND FLANGE



ÖN DİKDÖRTGEN FLANŞLI  
FRONT RECTANGLE FLANGE



Arka Bağlantı/Rear Connection

S TİPİ OYNAR MAFSAL  
S TYPE BALL JOINT



C TİPİ OYNAR MAFSAL  
C TYPE BALL JOINT

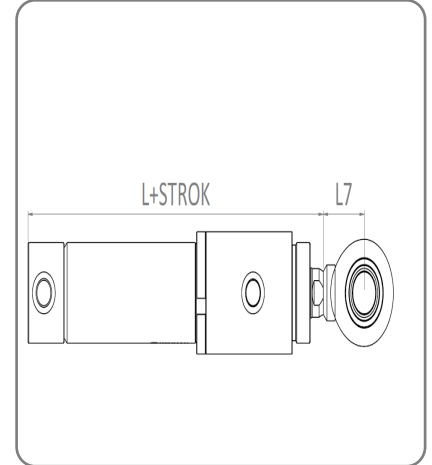
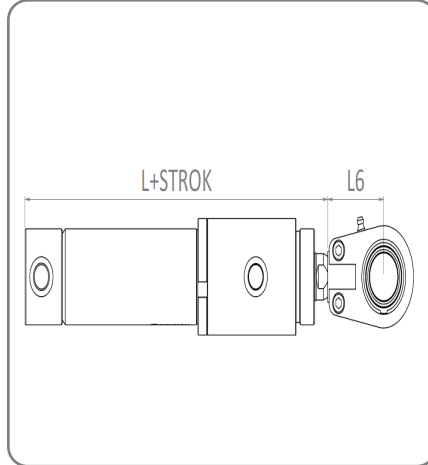
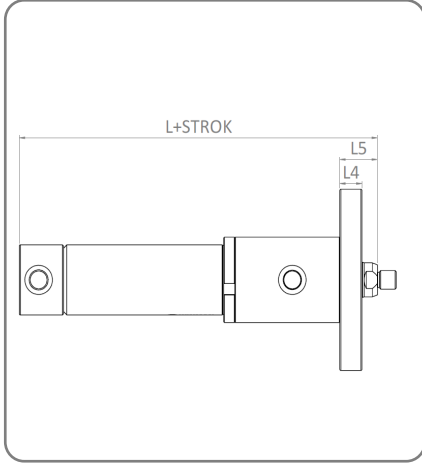




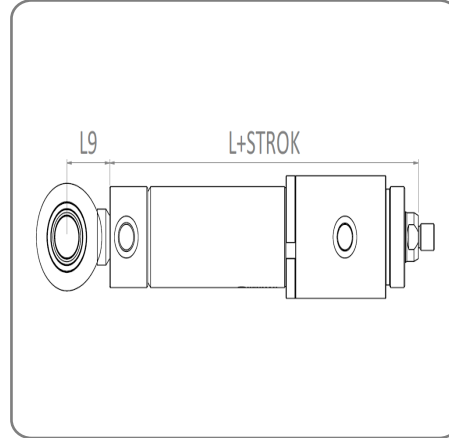
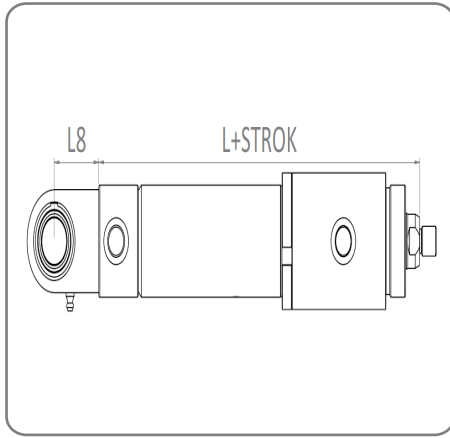
WINMAN W6 Tipi-Hidrolik Silindir/WINMAN W6 Type Hydraulic Cylinder

Bağlantılı Model Teknik Çizimleri/Linked Model Technical Drawings

Ön Bağlantı/Front Connection



Arka Bağlantı/Rear Connection

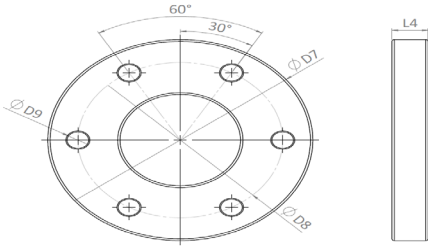


PİSTON ÇAPI PISTON DIAMETER	L	L4	L5	L6	L7	L8	L9
40	173	20	33	50	38	38	38
50	174	20	34	50	45	45	45
63	178						

**WINMAN W6 Tipi-Hidrolik Silindir/WINMAN W6 Type Hydraulic Cylinder**

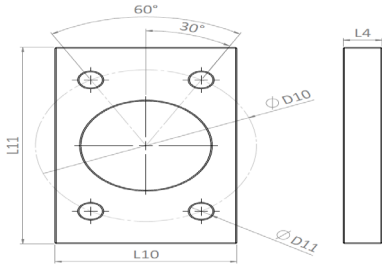
**Bağlantılı Model Teknik Çizimleri/Linked Model Technical Drawings**

YUVARLAK  
FLANŞ  
/  
ROUND  
FLANGE



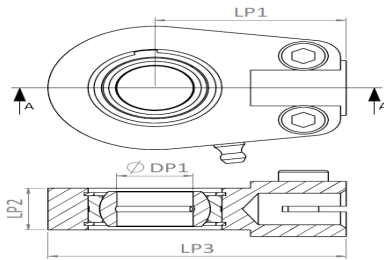
PİSTON ÇAPI PISTON DİA.	Ø D7	Ø D8	Ø D9	L4
40	125	105	8,5	20
50	155	125	10,5	20
63	178	148	10,5	20
80	198	165	13	25
100	226	190	13	25

DİKDÖRTGEN  
FLANŞ  
/  
RECTANGLE  
FLANGE



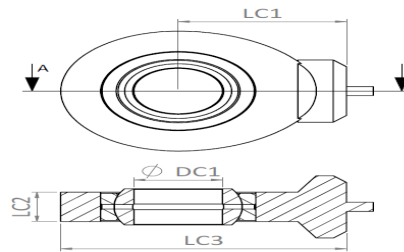
PİSTON ÇAPI PISTON DİA.	Ø D10	Ø D11	L10	L11	L4
40	105	8,5	80	130	20
50	125	10,5	95	150	20
63	148	10,5	110	170	20
80	165	13	130	190	25
100	190	13	155	220	25

P TİPİ  
OYNAR MAFSAL  
/  
P TYPE  
BALL JOINT



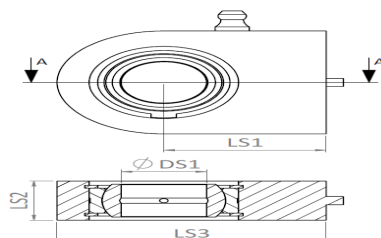
PİSTON ÇAPI PISTON DİA.	Ø DP1	LP1	LP2	LP3
40	20	50	20	78
50	25	50	23	78
63	30	60	28	92
80	40	85	35	132
100	50	105	40	163
125	60	130	50	200

C TİPİ  
OYNAR MAFSAL  
/  
C TYPE  
BALL JOINT



PİSTON ÇAPI PISTON DİA.	Ø DC1	LC1	LC2	LC3
40	20	38	13	64,5
50	25	45	17	77
63	30	51	19	87,5
80	40	69	23	115
100	50	88	30	144
125	60	100	38	167,5

S TİPİ  
OYNAR MAFSAL  
/  
S TYPE  
BALL JOINT



PİSTON ÇAPI PISTON DİA.	Ø DS1	LS1	LS2	LS3
40	20	38	19	63
50	25	45	23	72,5
63	30	51	28	83,5
80	40	69	35	119
100	50	88	40	149,5
125	60	100	50	170