



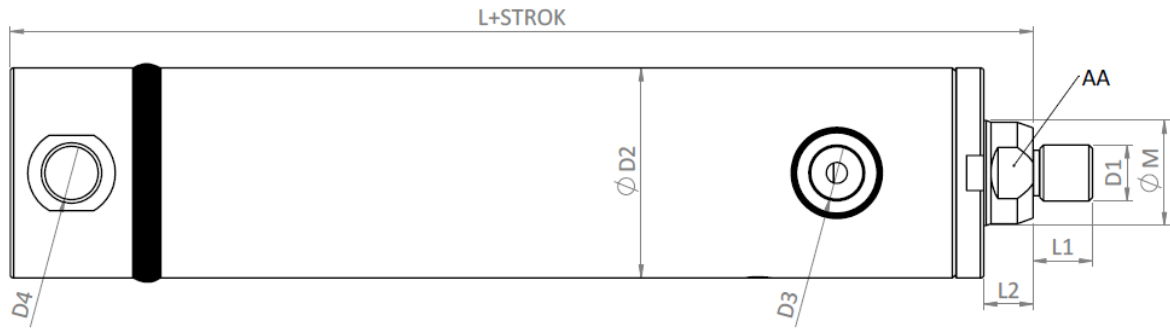
WINMAN W4 Tipi-Hidrolik Silindir/WINMAN W4 Type Hydraulic Cylinder



Özellikler / Specification

Maksimum Strok Uzunluğu/Maximum Stroke [mm]	1500
Optimum Viskozite/Optimum Viscosity	20 mm ² /s - 100 mm ²
Minimum Çalışma Basıncı /Minimum Working Pressure	10 Bar
Maximum Çalışma Hızı/Maximum Speed [mm/sec.]	0,5 m/s
Çap Ölçüleri/Bore Sizes	40 mm-100 mm
Piston Mili Ölçüleri/Rod Sizes	22 mm-70 mm
Çalışma Sıcaklığı/Worknig Temprature	-20°C'den +80°C'ye
Sızdırmazlık Elemanları/ Sealing Elements	NBR/PU
Kullanılacak Yağ/Oil To Be Used	Mineral Yağ

Teknik Çizim / Technical



PİSTON ÇAPI	M	AA	D1	Ø D2	D3	D4	L1	L2	L
40	20	16	M16X1,5	50	3/8"	1/4"	17	13	138
	25	21							
50	25	21	M16X1,5	60	3/8"	3/8"	17	14	142
	35	30							
63	30	26	M22X1,5	75	3/8"	3/8"	23	16	151
	35	30							
	40	34							
80	45	41	M35X1,5	95	1/2"	3/8"	36	18	173
	50	46							
	60	55							
100	70	60	M45X1,5	115	1/2"	1/2"	46	20	197
125	70	60	M58X1,5	145	1/2"	1/2"	59	23	200

Sipariş Kodu/Order Code

SİLİNDİR TİPİ CYLINDER TYPE	PİSTON ÇAPI PISTON DÍA.	MİL ÇAPI ROD DÍA.	STROK STROKE	MİL UCU BAĞLANTI ROD END MOUNTING	ÖN BAĞLANTI FRONT MOUN.	ORTA BAĞLANTI MIDDLE MOUN.	ARKA BAĞLANTI REAR MOUN.
W4	40 MM	20 MM	250 MM	P / C	Y / D	O	C / S

WINMAN W4 Tipi-Hidrolik Silindir/WINMAN W4 Type Hydraulic Cylinder

Bağlantılı Model Görünümleri/Linked Model Views

Mil Ucu Bağlantı/Rod End Mounting

P TİPİ OYNAR MAFSAL
P TYPE BALL JOINT

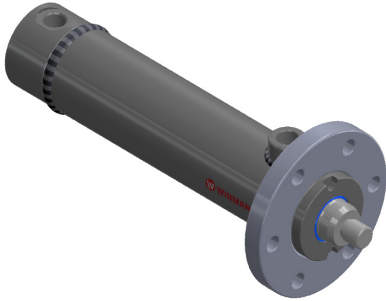


C TİPİ OYNAR MAFSAL
C TYPE BALL JOINT

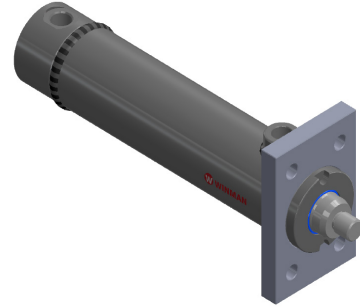


Ön Bağlantı/Front Connection

ÖN YUVARLAK FLANŞLI
FRONT ROUND FLANGE



ÖN DİKDÖRTGEN FLANŞLI
FRONT RECTANGLE FLANGE



Arka Bağlantı/Rear Connection

S TİPİ OYNAR MAFSAL
S TYPE BALL JOINT



C TİPİ OYNAR MAFSAL
C TYPE BALL JOINT

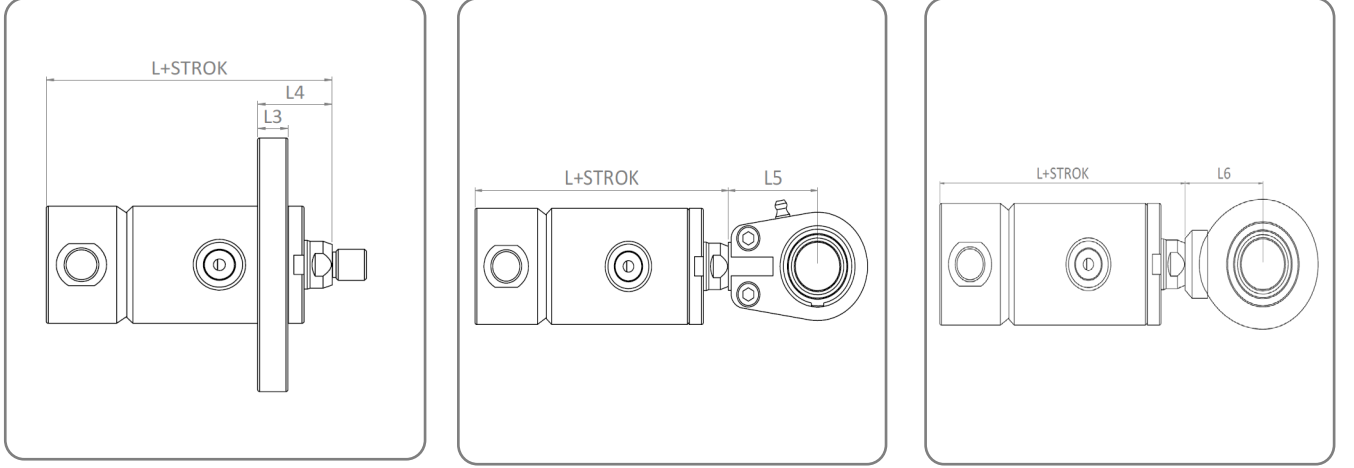




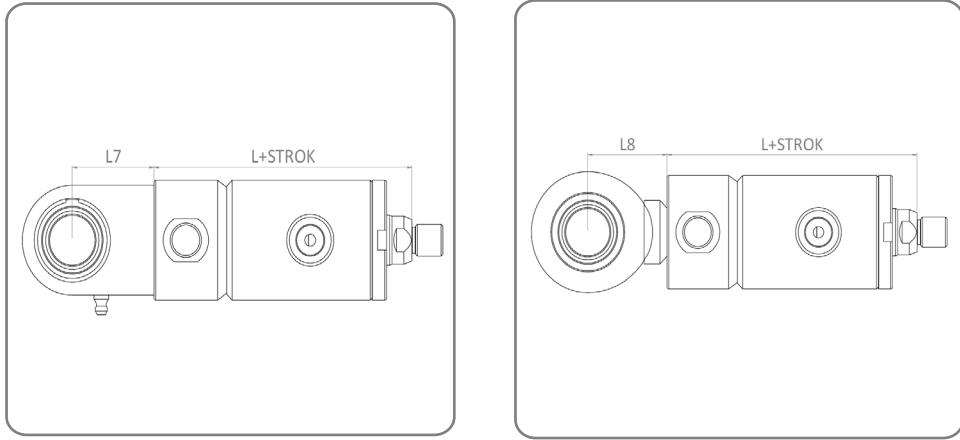
WINMAN W4 Tipi-Hidrolik Silindir/WINMAN W4 Type Hydraulic Cylinder

Bağlantılı Model Teknik Çizimleri/Linked Model Technical Drawings

Ön Bağlantı/Front Connection



Arka Bağlantı/Rear Connection

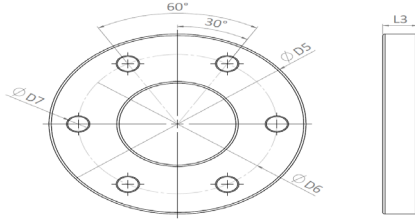


PİSTON ÇAPI PISTON DIAMETER	L	L3	L4	L5	L6	L7	L8
40	138	15	36	50	38	38	38
50	142	15	37	50	45	45	45
63	151						

WINMAN W4 Tipi-Hidrolik Silindir/WINMAN W4 Type Hydraulic Cylinder

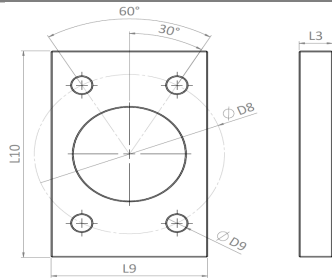
Bağlantılı Model Teknik Çizimleri/Linked Model Technical Drawings

YUVARLAK
FLANŞ
/
ROUND
FLANGE



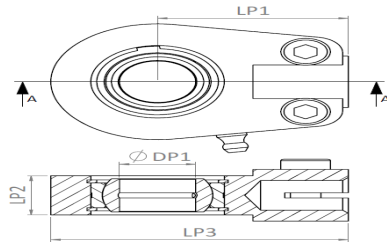
PİSTON ÇAPI PİSTON DIA.	Ø D5	Ø D6	Ø D7	L3
40	110	85	9	15
50	130	100	11	15
63	150	120	13	20
80	185	150	17,5	20
100	220	180	22	25
125	250	210	22	25

DİKDÖRTGEN
FLANŞ
/
RECTANGLE
FLANGE



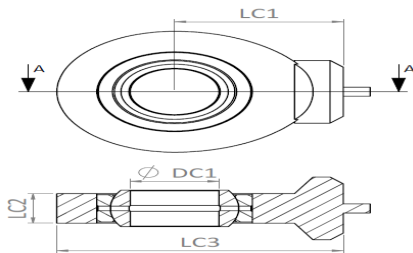
PİSTON ÇAPI PİSTON DIA.	Ø D8	Ø D9	L9	L10	L3
40	85	9	70	110	15
50	100	11	80	130	15
63	120	13	95	150	20
80	150	17,5	120	185	20
100	180	22	145	220	25
100	210	22	180	250	25

P TİPİ
OYNAR MAFSAL
/
P TYPE
BALL JOINT



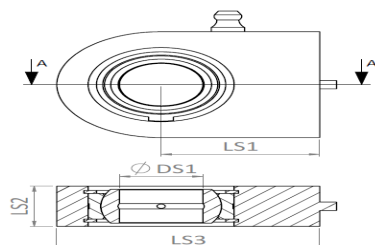
PİSTON ÇAPI PİSTON DIA.	Ø DP1	LP1	LP2	LP3
40	20	50	20	78
50	25	50	23	78
63	30	60	28	92
80	40	85	35	132
100	50	105	40	163
125	60	130	50	200

C TİPİ
OYNAR MAFSAL
/
C TYPE
BALL JOINT



PİSTON ÇAPI PİSTON DIA.	Ø DC1	LC1	LC2	LC3
40	20	38	13	64,5
50	25	45	17	77
63	30	51	19	87,5
80	40	69	23	115
100	50	88	30	144
125	60	100	38	167,5

S TİPİ
OYNAR MAFSAL
/
S TYPE
BALL JOINT



PİSTON ÇAPI PİSTON DIA.	Ø DS1	LS1	LS2	LS3
40	20	38	19	63
50	25	45	23	72,5
63	30	51	28	83,5
80	40	69	35	119
100	50	88	40	149,5
125	60	100	50	170