

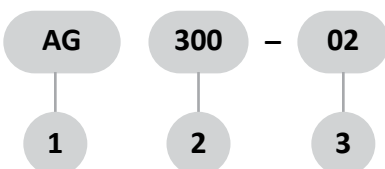
## AC Air Source Treatment Unit

## Gas - distrabution Block

## Specification:

Type	AG200-01,02	AG300-02,03	AG400-03,04
Port size (G)	1/8" . 1/4"	1/4" . 3/8"	3/8" . 1/2"
Way number	Four		
Operating pressure range MPa	0~0.85		
Ambient temperature °C	-10~60		

## How to order:



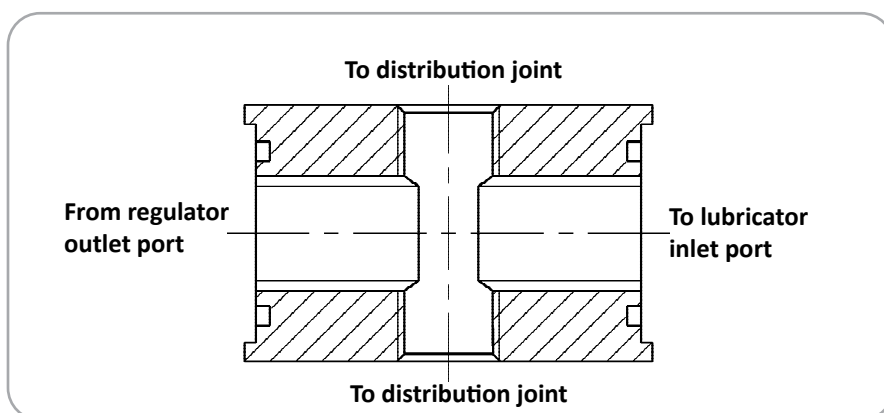
1	AV Soft Start - up Valve
2	Type: 200,300,400
3	Port size: 01:G1/8" , 02:G1/4" , 03:G3/8" , 04:G1/2"



## Product feature:

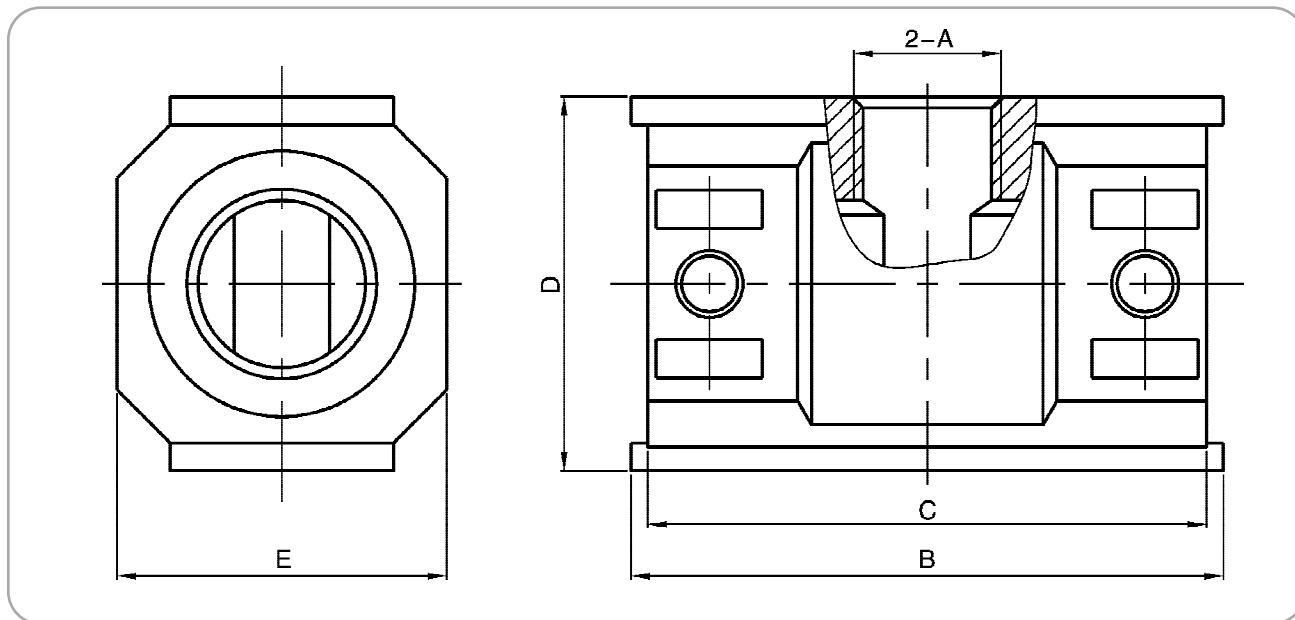
- 1.It is installed between AC ser,es regulator (or filter & regulator) and lubricator.The air flow is divided by the device by the device that one enters lubricator to supply oil for lubrication and the other (the second way) directly enters the equipment.
- 2.Use T bracket can be connect regulator and lubricator.

## Inner structure drawing:



AC Air Source Treatment Unit

Inner structure drawing:



Symbol \ Type	AG200		AG300		AG400	
	01	02	02	03	03	04
A	1/8"	1/4"	1/4"	3/8"	3/8"	1/2"
B	40	53	53		74	
C	42	50	50		70	
D	22	33.5	33.5		41.5	
E	27,5	29.5	29.5		36	