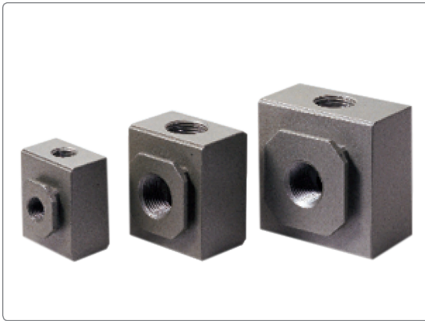


Preparation unit --Accessories

GA series of gas - distribution block



Specification

| Model | GA200-06 | GA200-08 | GA300-08 | GA300-10 | GA400-10 | GA400-14 | GA600-20 | GA600-25 |
|-------------------|-----------------------|----------|----------|----------|----------|----------|----------|----------|
| Fluid | Air | | | | | | | |
| Port size | 1/8" | 1/4" | 1/4" | 3/8" | 3/8" | 1/2" | 3/4" | 1" |
| Way number | Four | | | | | | | |
| Pressure range | 0 ~ 0.9MPa (0~130psi) | | | | | | | |
| Proof pressure | 1.5MPa (215psi) | | | | | | | |
| Temperature range | -20~70°C | | | | | | | |

① PT thread, NPT thread and G thread are available.

Ordering Code

GA200 08

Model

GA200: 200 Series gas-distribution block
 GA300: 300 Series gas-distribution block
 GA400: 400 Series gas-distribution block
 GA600: 600 Series gas-distribution block

Thread type

Blank: PT
 T: NPT
 G: G

Port size

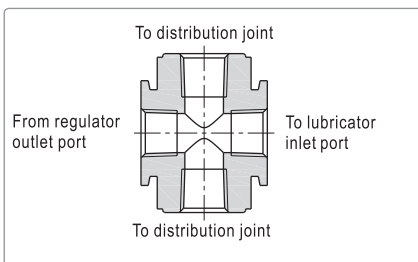
| Model | Port size |
|------------|-----------|
| 200 Series | 06: 1/8" |
| | 08: 1/4" |
| 300 Series | 08: 1/4" |
| | 10: 3/8" |
| 400 Series | 10: 3/8" |
| | 15: 1/2" |
| 600 Series | 20: 3/4" |
| | 25: 1" |

Note: When it is used with F.R.L. combination, extra mounting bracket is need. Please refer to below for order detail.

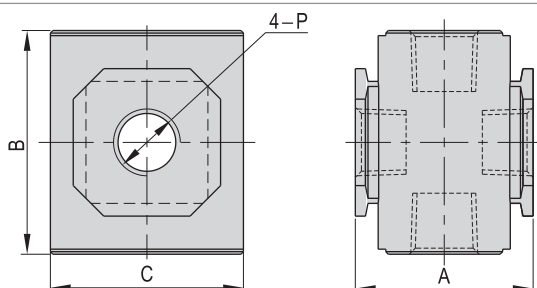
Product feature

1. It is installed between G series regulator (or filter & regulator) and G series Lubricator. The air flow is divided by the device that one enters Lubricator to supply oil for lubrication and the other (the second way) directly enters the equipment.
2. Several kinds of bracket can be selected to connect regulator and lubricator. Optional brackets are type T, type L and type U.

Inner structure



Dimensions



| Model/Item | | A | B | C | P |
|------------|----|------|----|----|------|
| GA200 | 06 | 28.5 | 36 | 30 | 1/8" |
| | 08 | 28.5 | 36 | 30 | 1/4" |
| GA300 | 08 | 35 | 44 | 38 | 1/4" |
| | 10 | 35 | 44 | 38 | 3/8" |
| GA400 | 10 | 42 | 52 | 52 | 3/8" |
| | 15 | 42 | 52 | 52 | 1/2" |
| GA600 | 20 | 60 | 76 | 68 | 3/4" |
| | 25 | 60 | 76 | 68 | 1" |

Joint accessories --Bracket

How to select the barcket

| Bracket name | Code | Photo | Adapt accessories model | | |
|-----------------|-----------|-------|-------------------------|-------|-------|
| | | | GV200 | GZ200 | GA200 |
| T shape bracket | GA200T-P1 | | GV200 | GZ200 | GA200 |
| | GA300T-P1 | | GV300 | GZ300 | GA300 |
| | GA400T-P1 | | GV400 | GZ400 | GA400 |
| | GA600T-P1 | | - | - | GA600 |
| L shape bracket | GA200L-P1 | | GV200 | GZ200 | GA200 |
| | GA300L-P1 | | GV300 | GZ300 | GA300 |
| | GA400L-P1 | | GV300 | - | GA400 |
| | GA600L-P1 | | - | - | GA600 |
| U shape bracket | GA200U-P1 | | GV200 | GZ200 | GA200 |
| | GA300U-P1 | | GV300 | GZ300 | GA300 |
| | GA400U-P1 | | GV400 | GZ400 | GA400 |
| | GA600U-P1 | | - | - | GA600 |

How to use the bracket

