

# CLEAN FITTING (C SERIES / CL SERIES)

## Application

- Clean air, Pure water, Medicinal fluid for piping

## Feature

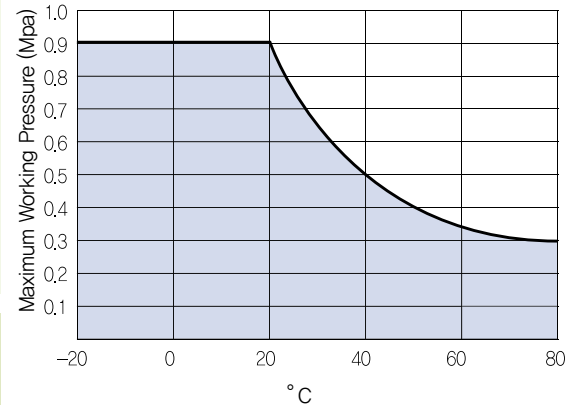
- All of the parts are washed, assembled and packed in a clean room and completely oil-free products which did not use any oils in rubbers.
- Since polypropylene (pp) resin is used, it is superior in non-oscillating and non-pollution.
- Thread body can be selected between polypropylene (pp) and sus 304
- Since the plastic material is transparent, it is possible to check the fluid.

## Specifications

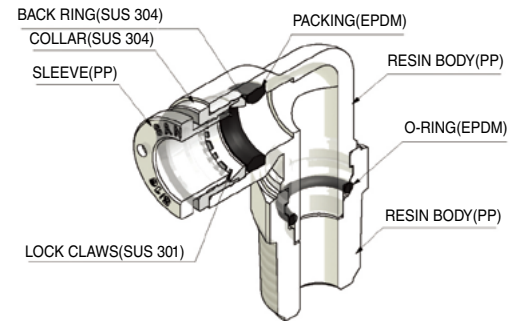
Fluid	Air(Clean air), Water(Pure water)	
Working Pressure Range	0~150PSI	0~9Kgf/cm <sup>2</sup> (0~900kPa)
Negative Pressure	-29.5inHg	-750mmHg(10Torr)
Temperature Range	-4~176 °F	-20~80 °C

※ In case of using water, please contact the manufacturer for the specification.

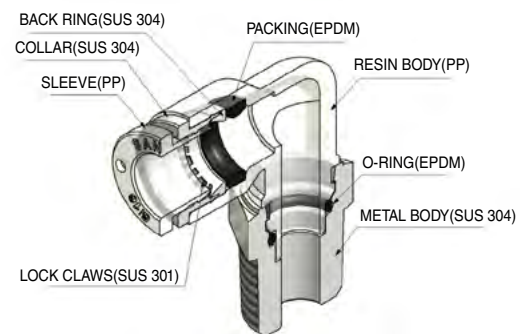
Correlation Diagram between Maximum Pressure and Temperature



Structural Diagram (C series)



Structural Diagram (CL series)



## Product Code System

**CPC 08 02**

①      ②      ③

### ① Type

(If the first initial of the product name is CL, the material of the thread body is SUS.)

### ② Tube Dia (∅D)






Code	04	06	08	10	12
Dia	∅04	∅06	∅08	∅10	∅12

### ③ Thread Size (Metric Thread & R(PT) Thread & G(PF) Thread)

	Metric size		R(PT) Thread				G(PF) Thread			
Code	M5	01	02	03	04	G01	G02	G03	G04	
Size	M5X0.8	R1/8	R1/4	R3/8	R1/2	G1/8	G1/4	G3/8	G1/2	

# Clean Fitting (C Series / CL Series)

C series Image Table

<p><b>CPC</b></p>  <p>Male Straight</p>	<p><b>CPL</b></p>  <p>Male Elbow</p>	<p><b>CPT</b></p>  <p>Male Branch Tee</p>	<p><b>CPST</b></p>  <p>Male Run Tee</p>	<p><b>CPUC</b></p>  <p>Union Straight</p>	<p><b>CPUL</b></p>  <p>Union Elbow</p>
<p><b>CPUT</b></p>  <p>Union Tee</p>	<p><b>CPY</b></p>  <p>Union Y</p>	<p><b>CPMM</b></p>  <p>Bulkhead Union</p>	<p><b>CPGJ</b></p>  <p>Plug-in Reducer</p>		

CL series Image Table

<p><b>CLPC</b></p>  <p>Male Straight</p>	<p><b>CLPC-G</b></p>  <p>Male Straight</p>	<p><b>CLPL</b></p>  <p>Male Elbow</p>	<p><b>CLPL-G</b></p>  <p>Male Elbow</p>	<p><b>CLPT</b></p>  <p>Male Branch Tee</p>	<p><b>CLPT-G</b></p>  <p>Male Branch Tee</p>
<p><b>CLPST</b></p>  <p>Male Run Tee</p>	<p><b>CLPST-G</b></p>  <p>Male Run Tee</p>	<p><b>CLPCF</b></p>  <p>Male Straight</p>	<p><b>CLPMM</b></p>  <p>Bulkhead Union</p>		

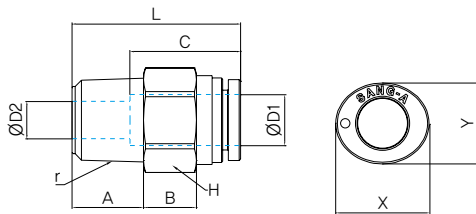
## CPC

Male Straight



MODEL [ØD-T] Tube(Metric)–Thread(R)

MODEL	ØD1	ØD2	R	A	B	C	H	L	X	Y	W.G(g)	Q'ty/ In Box
CPC 0401	4	4.5	R1/8	8.5	7	14.5	10	20.6	10.8	8.6	1.9	100
CPC 0402	4	4.5	R1/4	11.5	6.5	14.5	14	23.1	10.8	8.6	3.2	100
CPC 0601	6	5	R1/8	8.5	8	15.4	12	24.4	13	11.5	2.9	100
CPC 0602	6	5	R1/4	11.5	6	15.4	14	23.4	13	11.5	3.6	100
CPC 0801	8	6	R1/8	8.5	8.5	17.8	15	28.1	15	13	4.3	100
CPC 0802	8	6	R1/4	11.5	8.5	17.8	15	27.1	15	13	4.7	100
CPC 1002	10	8	R1/4	11.5	10	19.4	17	33.5	18.5	16	6.5	50
CPC 1003	10	8	R3/8	12.5	10	19.4	17	29.5	18.5	16	7	25
CPC 1004	10	12	R1/2	15.5	7.6	19.4	22	30.1	18.5	16	9.3	25
CPC 1203	12	10	R3/8	12.5	11	22.4	21	36.4	22.5	16	11	25
CPC 1204	12	12	R1/2	15.5	10	22.4	22	34.4	22.5	16	12.2	25



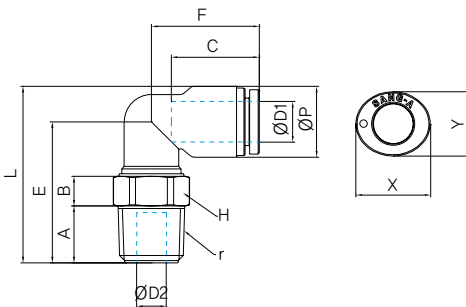
## CPL

Male Elbow



MODEL [ØD-T] Tube(Metric)–Thread(R)

MODEL	ØD1	ØP	A	B	C	E	F	L	H	R	ØD2	X	Y	W.G(g)	Q'ty/ In Box
CPL 0401	4	9.5	8.5	7	14.5	23.4	16.6	28.2	10	R1/8	4.5	10.8	8.6	2.7	100
CPL 0402	4	9.5	11.5	6	14.5	25.4	16.6	30.2	14	R1/4	4.5	10.8	8.6	3.8	100
CPL 0601	6	12	8.5	7	15.4	24.4	17.9	30.4	12	R1/8	4	13	11.5	3.9	50
CPL 0602	6	12	11.5	6	15.4	26.4	17.9	32.4	14	R1/4	4	13	11.5	4.8	50
CPL 0801	8	14.3	8.5	9	17.8	28.5	21.8	35.7	14	R1/8	6	15	13	5.7	50
CPL 0802	8	14.3	11.5	6	17.8	28.5	21.8	35.7	14	R1/4	6	15	13	6	50
CPL 1002	10	17	11.5	11.5	19.4	37	25	45.5	17	R1/4	8	18.5	16	9.4	20
CPL 1003	10	17	12.5	10	19.4	36.5	25	45	17	R3/8	8	18.5	16	10.2	20
CPL 1004	10	17	15.5	7.5	19.4	37	25	45.5	22	R1/2	12	18.5	16	12.4	20
CPL 1203	12	20.2	12.5	11.5	22.4	39.6	28.9	49.7	19	R3/8	10	22.5	16	14.6	20
CPL 1204	12	20.2	15.5	7.5	22.4	38.6	28.9	48.7	22	R1/2	12	22.5	16	16.2	20



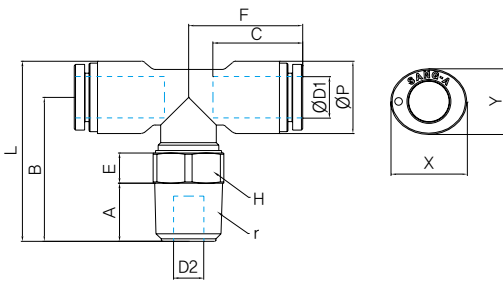
## CPT

Male Branch Tee



MODEL [ØD-T] Tube(Metric)-Thread(R)

MODEL	ØD1	ØP	A	B	C	E	F	L	H	R	ØD2	X	Y	W.G(g)	Q'ty/ In Box
CPT 0401	4	9.5	8.5	24	14.5	7	16.1	28.8	10	R1/8	4.5	10.8	8.6	4.1	50
CPT 0402	4	9.5	11.5	26	14.5	6	16.1	30.8	14	R1/4	4.5	10.8	8.6	5.2	50
CPT 0601	6	12	8.5	24.4	15.4	7	17.9	30.4	12	R1/8	4	13	11.5	6.2	50
CPT 0602	6	12	11.5	26.4	15.4	6	17.9	32.4	14	R1/4	4	13	11.5	7.1	50
CPT 0801	8	14.3	8.5	28.5	17.8	9	22.6	35.7	14	R1/8	6	15	13	9.1	50
CPT 0802	8	14.3	11.5	28.5	17.8	6	22.6	35.7	14	R1/4	6	15	13	9.4	50
CPT 1002	10	17	11.5	37	19.4	8.5	25	45.5	17	R1/4	8	18.5	16	12.6	20
CPT 1003	10	17	12.5	36.5	19.4	10	25	45	17	R3/8	8	18.5	16	15.2	20
CPT 1004	10	17	15.5	37	19.4	7.5	25	45.5	22	R1/2	12	18.5	16	17.4	20
CPT 1203	12	20.2	12.5	39.6	22.4	11.5	28.9	49.7	19	R3/8	10	22.5	16	22.9	15
CPT 1204	12	20.2	15.5	38.6	22.4	7.5	28.9	48.7	22	R1/2	12	22.5	16	24.5	15



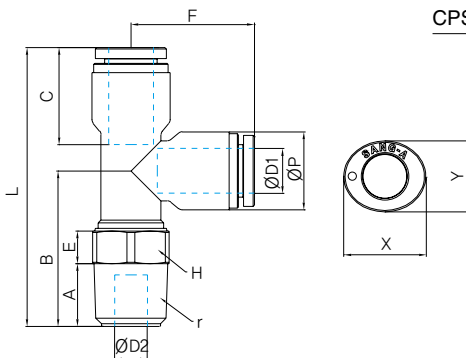
## CPST

Male Run Tee



MODEL [ØD-T] Tube(Metric)-Thread(R)

MODEL	ØD1	ØP	A	B	C	E	F	L	H	R	ØD2	X	Y	W.G(g)	Q'ty/ In Box
CPST 0401	4	9.5	8.5	23.4	14.5	7	17.1	40.5	10	R1/8	4.5	10.8	8.6	4.1	100
CPST 0402	4	9.5	11.5	25.4	14.5	6	17.1	42.5	14	R1/4	4.5	10.8	8.6	5.2	50
CPST 0601	6	12	8.5	24.4	15.4	7	18.9	43.3	12	R1/8	4	13	11.5	6.2	50
CPST 0602	6	12	11.5	26.4	15.4	6	18.9	45.3	14	R1/4	4	13	11.5	7.1	50
CPST 0801	8	14.3	8.5	28.5	17.8	9	22.6	51.1	14	R1/8	6	15	13	9.1	50
CPST 0802	8	14.3	11	28.5	17.8	6.5	22.6	51.1	14	R1/4	6	15	13	9.4	50
CPST 1002	10	17	11.5	37	19.4	11.5	25	62	17	R1/4	8	18.5	16	14.4	20
CPST 1003	10	17	12.5	36.5	19.4	10	25	61.5	17	R3/8	8	18.5	16	15.2	20
CPST 1004	10	17	15.5	37	19.4	7.5	25	62	22	R1/2	12	18.5	16	17.4	20
CPST 1203	12	20.2	12.5	39.6	22	11.5	28.9	68.5	19	R3/8	10	22.5	16	22.9	15
CPST 1204	12	20.2	15.5	38.6	22	7.5	28.9	67.4	22	R1/2	12	22.5	16	24.5	15

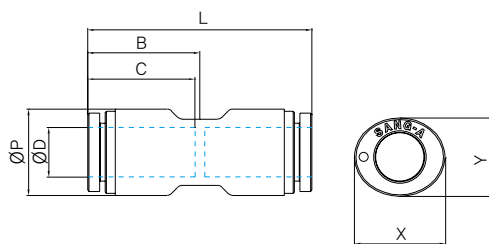


## CPUC Union Straight



MODEL [ØD] Tube(Metric)

MODEL	ØD	ØP	C	B	L	X	Y	W.G(g)	Q'ty/ In Box
CPUC 04	4	9.5	14.5	15.1	30.2	10.8	8.6	2.9	100
CPUC 06	6	12	15.4	16.1	32.2	13	11.5	4.7	50
CPUC 08	8	14.3	17.8	18.6	37.2	15	13	6.9	50
CPUC 10	10	17	19.4	20.3	40.5	18.5	16	10.3	50
CPUC 12	12	20.2	22.4	23.4	46.8	22.5	16	17	20

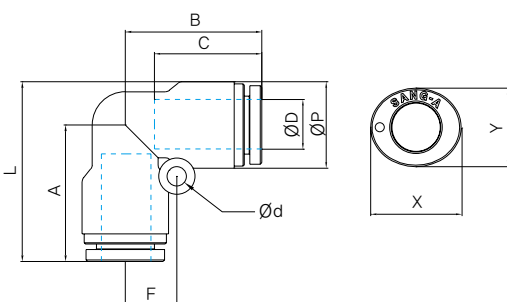


## CPUL Union Elbow



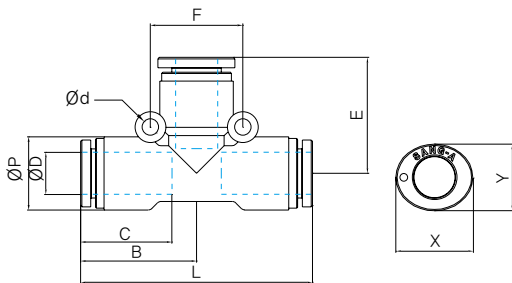
MODEL [ØD-T] Tube(Metric)-Thread(R)

MODEL	ØD	ØP	Ød	A	B	C	F	L	X	Y	W.G(g)	Q'ty/ In Box
CPUL 04	4	9.5	3.2	17.1	17.1	14.5	6	21.9	10.8	8.6	3.2	100
CPUL 06	6	12	3.2	18.9	18.9	15.4	6.5	24.9	13	11.5	5	50
CPUL 08	8	14.3	3.2	22.6	22.6	17.8	8.5	25.2	15	13	7.5	50
CPUL 10	10	17	4.2	25	25	19.4	12	33.5	18.5	16	11.4	25
CPUL 12	12	20.2	4.2	28.9	28.9	22.4	12.5	39	22.5	16	18.5	20



## CPUT

Union Tee

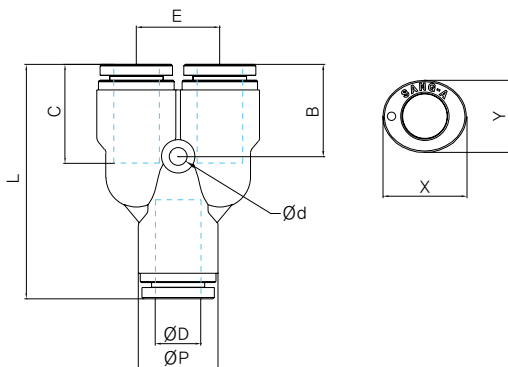


MODEL [ØD-T] Tube(Metric)-Thread(R)

MODEL	ØD	ØP	Ød	B	C	E	F	L	X	Y	W.G(g)	Qty/In Box
CPUT 04	4	9.5	3.2	17.1	14.5	17.1	12	34.2	10.8	8.6	4.7	100
CPUT 06	6	12	3.2	18.9	15.4	18.9	13	37.7	13	11.5	7.5	50
CPUT 08	8	14.3	3.2	22.6	17.8	22.6	18	45.2	15	13	11.1	25
CPUT 10	10	17	4.2	25	19.4	25	24	50	18.5	16	16.8	20
CPUT 12	12	20.2	4.2	28.9	22.4	28.9	25	57.8	22.5	16	27.2	15

## CPY

Union Y



MODEL [ØD-T] Tube(Metric)-Thread(R)

MODEL	ØD	ØP	Ød	B	C	E	L	X	Y	W.G(g)	Qty/In Box
CPY 04	4	9.5	3.2	12.9	14.5	9.8	31.7	10.8	8.6	4.7	100
CPY 06	6	12	3.2	13.9	15.4	12.5	34.7	13	11.5	7.5	50
CPY 08	8	14.3	3.2	16.6	17.8	15	42.2	15	13	11.2	50
CPY 10	10	17	4.2	17.5	19.4	17.5	45	18.5	16	16.7	20
CPY 12	12	20.2	4.2	19.9	22.4	21	53.3	22.5	16	27.7	15

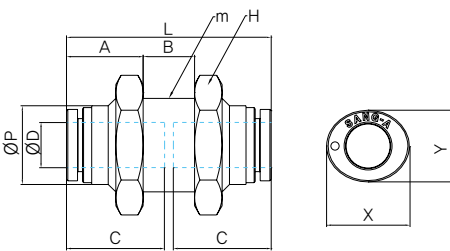
## CPMM

Bulkhead Union



MODEL [ØD] Tube(Metric)

MODEL	ØD	ØP	A	B	C	H	L	M	X	Y	W.G(g)	Q'ty/In Box
CPMM 04	4	9.5	10.4	9.5	14.5	17	30.2	12x1	10.8	8.6	13.1	100
CPMM 06	6	12	11.9	8.5	15.4	19	32.2	15x1	13	11.5	15.3	50
CPMM 08	8	14.3	14.0	9.3	17.8	22	37.2	17x1	15	13	24.8	50
CPMM 10	10	17	13.5	13.5	19.4	27	40.5	20x1	18.5	16	39	25
CPMM 12	12	20.2	15.8	15.2	22.4	30	46.8	24x1	22.5	16	53.9	25



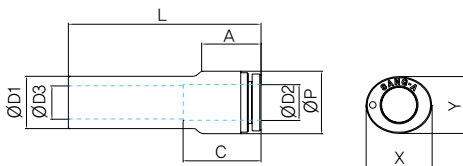
## CPGJ

Plug-in Reducer



MODEL [ØD-ØD] Tube(Metric)-Tube(Metric)

MODEL	ØD1	ØD2	ØD3	ØP	A	C	L	X	Y	W.G(g)	Q'ty/In Box
CPGJ 0604	6	4	4	9.5	11.3	14.5	37.6	10.8	8.6	1.8	100
CPGJ 0804	8	4	6	9.5	11.3	14.5	38.1	10.8	8.6	2	100
CPGJ 0806	8	6	6	12	12.4	15.4	40.9	13	11.5	2.9	100
CPGJ 1006	10	6	8	12	12.4	15.4	40.5	13	11.5	3	100
CPGJ 1008	10	8	7	14.3	13.6	17.8	46.1	15	13	4.4	100
CPGJ 1208	12	8	9	14.3	13.6	17.8	44.1	15	13	4.6	100
CPGJ 1210	12	10	9	17	15	19.4	50.5	18.5	16	6.5	100



## CLPC

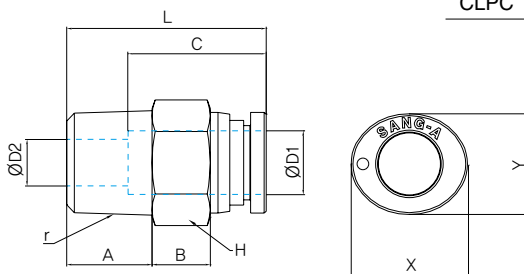
Male Straight



MODEL [ØD-T] Tube(Metric)-Thread(R)

(mm)

MODEL	ØD1	ØD2	R	A	B	C	H	L	X	Y	W.G(g)	Q'ty/In Box
CLPC 04M5	4	2	M5	4	8.8	14.5	8	20.1	10.8	8.6	4	100
CLPC 0401	4	4.5	R1/8	8	6.2	14.5	10	20.1	10.8	8.6	8	100
CLPC 0402	4	4.5	R1/4	11	4	14.5	14	20.1	10.8	8.6	15.9	100
CLPC 06M5	6	2	M5	4	10.1	15.4	11	21.7	13	11.5	7.5	100
CLPC 0601	6	5	R1/8	8	7.7	15.4	11	21.9	13	11.5	8.6	100
CLPC 0602	6	5	R1/4	11	6	15.4	14	22.7	13	11.5	16.9	100
CLPC 0801	8	6	R1/8	8	10.5	17.8	13	27.7	15	13	12	100
CLPC 0802	8	6	R1/4	11	7.5	17.8	14	25.7	15	13	16	100
CLPC 1002	10	8	R1/4	11	12.1	19.4	17	32.4	18.5	16	23.7	50
CLPC 1003	10	8	R3/8	12	9.1	19.4	17	28.4	18.5	16	27.6	25
CLPC 1004	10	12	R1/2	15	5	19.4	21	27.3	18.5	16	44.6	25
CLPC 1203	12	10	R3/8	12	10.5	22.4	19	31.8	22.5	16	29.7	25
CLPC 1204	12	12	R1/2	15	9.5	22.4	21	33.8	22.5	16	50.7	25



## CLPC-G

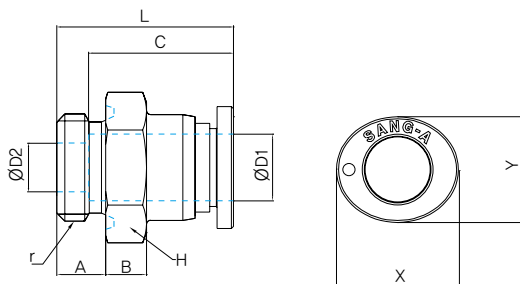
Male Straight



MODEL [ØD-T] Tube(Metric)-Thread(G)

(mm)

MODEL	ØD1	ØD2	R	A	B	C	H	L	X	Y	W.G(g)	Q'ty/In Box
CLPC 04G01	4	3	G1/8	5.3	4	14.5	13	18.4	10.8	8.6	7.6	100
CLPC 04G02	4	3	G1/4	6	4	14.5	16	18.1	10.8	8.6	12.6	100
CLPC 06G01	6	4	G1/8	5.3	4	15.4	13	23	13	11.5	10.1	100
CLPC 06G02	6	4	G1/4	6	4	15.4	16	19.7	13	11.5	12.7	100
CLPC 08G01	8	6	G1/8	5.3	5	17.8	13	26	15	13	11.1	100
CLPC 08G02	8	6	G1/4	6	5	17.8	16	21.7	15	13	12.8	100
CLPC 10G02	10	8	G1/4	6	4	19.4	16	28.3	18.5	16	17.7	50
CLPC 10G03	10	8	G3/8	7	4	19.4	20	24.3	18.5	16	20.6	50
CLPC 10G04	10	8	G1/2	8.5	5	19.4	24	24.8	18.5	16	36.2	50
CLPC 12G03	12	10	G3/8	7	4	22.4	20	32.4	22.5	16	30.4	50
CLPC 12G04	12	10	G1/2	8.5	5	22.4	24	28.9	22.5	16	38.1	25





## CLPL

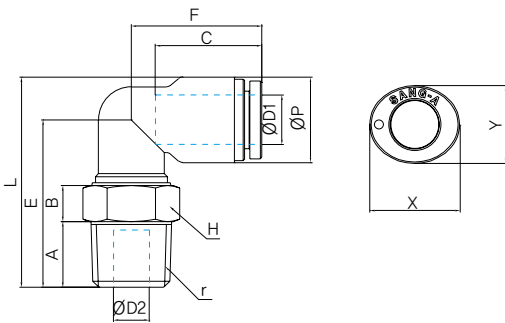
Male Elbow



MODEL [ØD-T] Tube(Metric)–Thread(R)

(mm)

MODEL	ØD1	ØP	A	B	C	E	F	L	H	R	ØD2	X	Y	W.G(g)	Qty/ In Box
CLPL 04M5	4	9.5	4	8.9	14.5	20.8	16.6	25.6	10	M5	2.5	10.8	8.6	6.5	100
CLPL 0401	4	9.5	8	5	14.5	20.9	16.6	25.7	10	R1/8	3	10.8	8.6	8.3	100
CLPL 0402	4	9.5	11	5	14.5	23.9	16.6	28.7	14	R1/4	3	10.8	8.6	16.6	100
CLPL 06M5	6	12	4	8.9	15.4	21.8	17.9	27.8	12	M5	2.5	13	11.5	8.7	100
CLPL 0601	6	12	8	6	15.4	22.9	17.9	28.9	12	R1/8	4	13	11.5	10.3	50
CLPL 0602	6	12	11	5	15.4	24.9	17.9	30.9	14	R1/4	4	13	11.5	16.6	50
CLPL 0801	8	14.3	8	9	17.8	28	21.8	35.2	14	R1/8	6	15	13	15	50
CLPL 0802	8	14.3	11	6	17.8	28	21.8	35.2	14	R1/4	6	15	13	16.5	50
CLPL 1002	10	17	11	11.5	19.4	36.5	25	45	17	R1/4	8	18.5	16	26.4	20
CLPL 1003	10	17	12	8	19.4	34	25	42.5	17	R3/8	8	18.5	16	31.3	20
CLPL 1004	10	17	15	6	19.4	35	25	43.5	21	R1/2	8	18.5	16	50	20
CLPL 1203	12	20.2	12	11.5	22.4	39.1	28.9	49.2	19	R3/8	10	22.5	16	40.2	20
CLPL 1204	12	20.2	15	7.5	22.4	38.1	28.9	48.2	21	R1/2	10	22.5	16	51.4	20



## CLPL-G

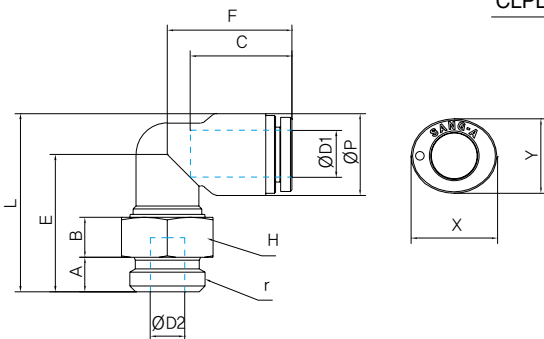
Male Elbow



MODEL [ØD-T] Tube(Metric)–Thread(G)

(mm)

MODEL	ØD1	ØP	A	B	C	E	F	L	H	R	ØD2	X	Y	W.G (g)	Qty/ In Box
CLPL 04G01	4	9.5	5.3	5	14.5	18.2	16.6	23	13	G1/8	3	10.8	8.6	8.4	100
CLPL 04G02	4	9.5	6	4	14.5	17.9	16.6	22.7	16	G1/4	3	10.8	8.6	12.6	100
CLPL 06G01	6	12	5.3	7	15.4	21.2	17.9	27.2	13	G1/8	4	13	11.5	10.2	100
CLPL 06G02	6	12	6	5	15.4	19.9	17.9	25.9	16	G1/4	4	13	11.5	14	50
CLPL 08G01	8	14.3	5.3	9.5	17.8	25.8	21.8	33	13	G1/8	6	15	13	11.9	50
CLPL 08G02	8	14.3	6	7	17.8	24	21.8	31.2	16	G1/4	6	15	13	16.7	50
CLPL 10G02	10	17	6	11	19.4	31	25	39.5	16	G1/4	8	18.5	16	20.2	25
CLPL 10G03	10	17	7	8	19.4	29	25	37.5	20	G3/8	8	18.5	16	28.4	25
CLPL 10G04	10	17	8.5	5	19.4	27.5	25	36	24	G1/2	8	18.5	16	36.8	25
CLPL 12G03	12	20.2	7	10	22.4	32.6	28.9	42.7	20	G3/8	10	22.5	16	32.8	25
CLPL 12G04	12	20.2	8.5	5	22.4	29.1	28.9	39.2	24	G1/2	10	22.5	16	37.3	25



## CLPT

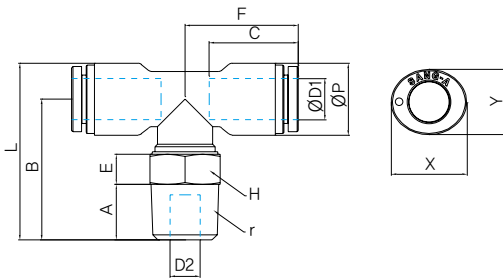
Male Branch Tee



MODEL [ØD-T] Tube(Metric)-Thread(R)

(mm)

MODEL	ØD1	ØP	A	B	C	E	F	L	H	R	ØD2	X	Y	W.G (g)	Q'ty/In Box
CLPT 04M5	4	9.5	4	21.4	14.5	8.9	16.1	26.2	10	M5	2.5	10.8	8.6	8	100
CLPT 0401	4	9.5	8	21.5	14.5	5	16.1	26.3	10	R1/8	3	10.8	8.6	9.7	100
CLPT 0402	4	9.5	11	24.5	14.5	5	16.1	29.3	14	R1/4	3	10.8	8.6	18.1	50
CLPT 06M5	6	12	4	21.8	15.4	8.9	17.9	27.8	12	M5	2.5	13	11.5	11	50
CLPT 0601	6	12	8	22.9	15.4	6	17.9	28.9	12	R1/8	4	13	11.5	12.6	50
CLPT 0602	6	12	11	24.9	15.4	5	17.9	30.9	14	R1/4	4	13	11.5	18.8	50
CLPT 0801	8	14.3	8	28	17.8	9	22.6	35.2	14	R1/8	6	15	13	18.4	50
CLPT 0802	8	14.3	11	28	17.8	6	22.6	35.2	14	R1/4	6	15	13	19.9	50
CLPT 1002	10	17	11	36.5	19.4	11.5	25	45	17	R1/4	8	18.5	16	31.4	20
CLPT 1003	10	17	12	34	19.4	8	25	42.5	17	R3/8	8	18.5	16	36.3	20
CLPT 1004	10	17	15	35	19.4	6	25	43.5	21	R1/2	8	18.5	16	55	20
CLPT 1203	12	20.2	12	39.1	22.4	11.5	28.9	49.2	19	R3/8	10	22.5	16	48.6	15
CLPT 1204	12	20.2	15	38.1	22.4	7.5	28.9	48.2	21	R1/2	10	22.5	16	59.7	15



## CLPT-G

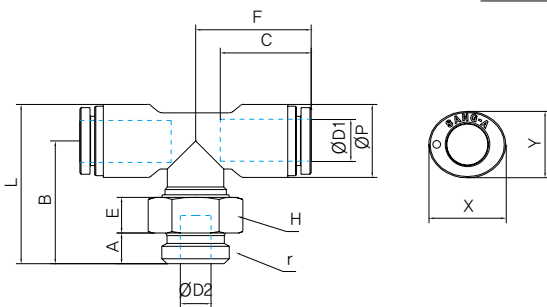
Male Branch Tee



MODEL [ØD-T] Tube(Metric)-Thread(G)

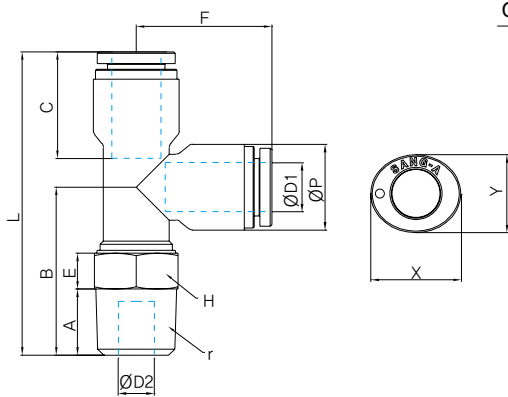
(mm)

MODEL	ØD1	ØP	A	B	C	E	F	L	H	R	ØD2	X	Y	W.G (g)	Q'ty/In Box
CLPT 04G01	4	9.5	5.3	18.8	14.5	5	16.1	23.6	13	G1/8	3	10.8	8.6	9.8	100
CLPT 04G02	4	9.5	6	18.5	14.5	4	16.1	23.3	16	G1/4	3	10.8	8.6	14	50
CLPT 06G01	6	12	5.3	21.2	15.4	7	17.9	27.2	13	G1/8	4	13	11.5	12.5	50
CLPT 06G02	6	12	6	19.9	15.4	5	17.9	25.9	16	G1/4	4	13	11.5	16.3	50
CLPT 08G01	8	14.3	5.3	25.8	17.8	9.5	22.6	33	13	G1/8	6	15	13	15.3	50
CLPT 08G02	8	14.3	6	24	17.8	7	22.6	31.2	16	G1/4	6	15	13	20.1	50
CLPT 10G02	10	17	6	31	19.4	11	25	39.5	16	G1/4	8	18.5	16	25.2	25
CLPT 10G03	10	17	7	29.6	19.4	8	25	37.5	20	G3/8	8	18.5	16	33.5	25
CLPT 10G04	10	17	8.5	27.5	19.4	5	25	36	24	G1/2	8	18.5	16	41.8	25
CLPT 12G03	12	20.2	7	32.6	22.4	10	28.9	42.7	20	G3/8	10	22.5	16	41.1	20
CLPT 12G04	12	20.2	8.5	29.1	22.4	5	28.9	39.2	24	G1/2	10	22.5	16	45.6	20



## CLPST

Male Run Tee

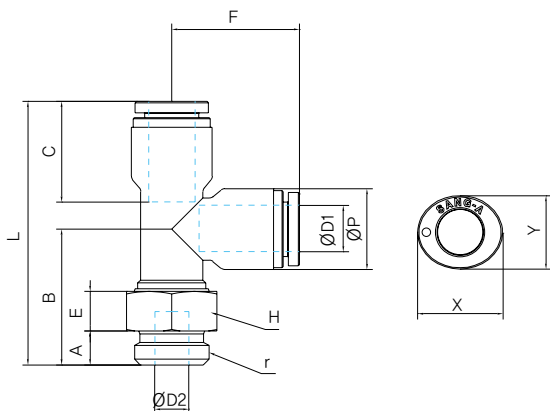


MODEL [ØD-T] Tube(Metric)–Thread(R)

MODEL	ØD1	ØP	A	B	C	E	F	L	H	R	ØD2	X	Y	W.G (g)	Q'ty/In Box
CLPST 04M5	4	9.5	4	20.8	14.5	8.9	17.1	37.9	10	M5	2.5	10.8	8.6	8	100
CLPST 0401	4	9.5	8	20.9	14.5	5	17.1	38	10	R1/8	3	10.8	8.6	9.7	100
CLPST 0402	4	9.5	11	23.9	14.5	5	17.1	41	14	R1/4	3	10.8	8.6	18.1	50
CLPST 06M5	6	12	4	21.8	15.4	8.9	18.9	40	12	M5	2.5	13	11.5	11	50
CLPST 0601	6	12	8	22.9	15.4	6	18.9	41.8	12	R1/8	4	13	11.5	12.6	50
CLPST 0602	6	12	11	24.9	15.4	5	18.9	43.8	14	R1/4	4	13	11.5	18.9	50
CLPST 0801	8	14.3	8	28	17.8	9	22.6	50.6	14	R1/8	6	15	13	18.4	50
CLPST 0802	8	14.3	11	28	17.8	6	22.6	50.6	14	R1/4	6	15	13	19.9	50
CLPST 1002	10	17	11	36.5	19.4	11.5	25	61.5	17	R1/4	6	18.5	16	31.4	20
CLPST 1003	10	17	12	34	19.4	8	25	59	17	R3/8	8	18.5	16	36.3	20
CLPST 1004	10	17	15	35	19.4	6	25	60	21	R1/2	8	18.5	16	55	20
CLPST 1203	12	20.2	12	39.1	22.4	11.5	28.9	68	19	R3/8	10	22.5	16	48.6	15
CLPST 1204	12	20.2	15	38.1	22.4	7.5	28.9	67	21	R1/2	10	22.5	16	59.7	15

## CLPST-G

Male Run Tee



MODEL [ØD-T] Tube(Metric)–Thread(G)

MODEL	ØD1	ØP	A	B	C	E	F	L	H	R	ØD2	X	Y	W.G (g)	Q'ty/In Box
CLPST 04G01	4	9.5	5.3	18.2	14.5	5	17.1	35.3	13	G1/8	3	10.8	8.6	9.8	100
CLPST 04G02	4	9.5	6	17.9	14.5	4	17.1	35	16	G1/4	3	10.8	8.6	14	50
CLPST 06G01	6	12	5.3	21.2	15.4	7	18.9	40.1	13	G1/8	4	13	11.5	12.5	50
CLPST 06G02	6	12	6	19.9	15.4	5	18.9	38.8	16	G1/4	4	13	11.5	16.3	50
CLPST 08G01	8	14.3	5.3	25.8	17.8	9.5	22.6	48.4	13	G1/8	6	15	13	15.3	50
CLPST 08G02	8	14.3	6	24	17.8	7	22.6	46.6	16	G1/4	6	15	13	20	50
CLPST 10G02	10	17	6	31	19.4	11	25	56	16	G1/4	8	18.5	16	25.2	25
CLPST 10G03	10	17	7	29	19.4	8	25	54	20	G3/8	8	18.5	16	33.5	25
CLPST 10G04	10	17	8.5	27.5	19.4	5	25	52.5	24	G1/2	8	18.5	16	41.8	25
CLPST 12G03	12	20.2	7	32.6	22.4	10	28.9	61.5	20	G3/8	10	22.5	16	41.1	20
CLPST 12G04	12	20.2	8.5	29.1	22.4	5	28.9	58	24	G1/2	10	22.5	16	45.6	20

## CLPCF

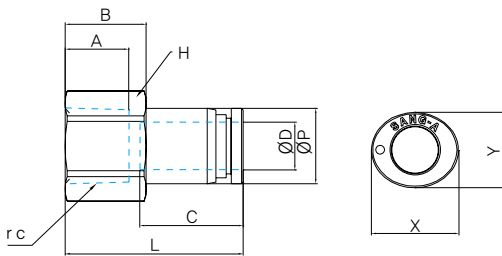
Male Straight



MODEL [ØD-T] Tube(Metric)–Thread(R)

(mm)

MODEL	ØD	ØP	Rc	A	B	C	H	L	X	Y	W.G(g)	Q'ty/ In Box
CLPCF 04M5	4	8.8	M5	5	5	14.5	9	20.5	10.8	8.6	6.2	100
CLPCF 0401	4	8.8	Rc1/8	9	11	14.5	13	24.4	10.8	8.6	11.9	100
CLPCF 0402	4	8.8	Rc1/4	12	14	14.5	17	27.4	10.8	8.6	21.6	100
CLPCF 0601	6	11	Rc1/8	9	11	15.4	13	25.3	13	11.5	13.1	100
CLPCF 0602	6	11	Rc1/4	12	14	15.4	17	28.3	13	11.5	22.8	50
CLPCF 0801	8	13	Rc1/8	9	10	17.8	13	27.7	15	13	14.5	50
CLPCF 0802	8	13	Rc1/4	12	14	17.8	17	30.7	15	13	24.3	50
CLPCF 1002	10	15.5	Rc1/4	12	13	19.4	17	32.4	18.5	16	26.7	50
CLPCF 1003	10	15.5	Rc3/8	13	15	19.4	19	33.4	18.5	16	28.5	25
CLPCF 1004	10	15.5	Rc1/2	16	18	19.4	24	36.4	18.5	16	47	25
CLPCF 1203	12	18.8	Rc3/8	13	15	22.4	19	36.4	22.5	16	34.9	25
CLPCF 1204	12	18.8	Rc1/2	16	18	22.4	24	39.4	22.5	16	53.4	25



## CLPMM

Bulkhead Union



MODEL [ØD-ØD] Tube(Metric)–Tube(Metric)

(mm)

MODEL	ØD	ØP	A	B	C	H	L	M	X	Y	W.G(g)	Q'ty/ In Box
CLPMM 04	4	8.8	11.7	8.8	14.5	17	30.2	12x1	10.8	8.6	24.5	100
CLPMM 06	6	11	12.2	7.5	15.4	19	31.8	15x1	13	11.5	29.2	50
CLPMM 08	8	13	14.7	8	17.8	22	37.4	17x1	15	13	43.8	50
CLPMM 10	10	15	15	11	19.4	27	40.1	20x1	18.5	16	72.2	25
CLPMM 12	12	18.8	16.9	12	22.4	30	45.8	24x1	22.5	16	92.9	25

