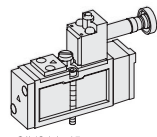
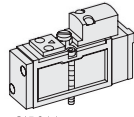
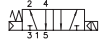


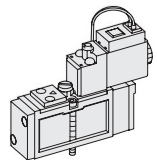
# WINMAN WSIV200 Serisi ISO Valfler / WSIV200 Series ISO Valves



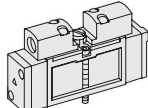
WSIV211-IP-\*\*\*



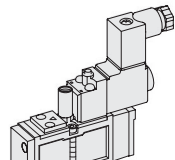
WSIP211



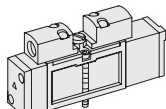
WSIV211-IP-SD1-\*\*\*



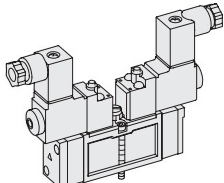
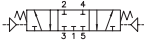
WSIP220



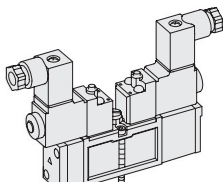
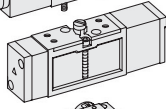
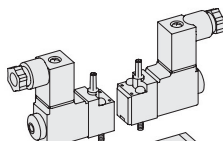
WSIV211-EP-SC1-CN1-\*\*\*



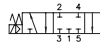
WSIP233



WSIV220-IP-SC1-CN1-\*\*\*

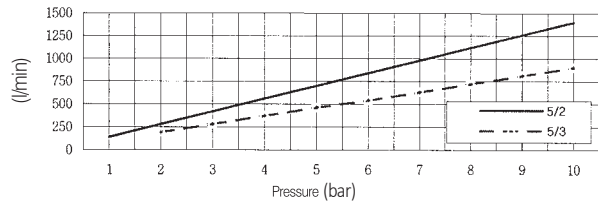


WSIV233-IP-SC1-CN1-\*\*\*



Item	Series Function	Solenoid, Pneumatic	
		5 Port 2 Position	5 Port 3 Position
Fluid		Compressed Air & Inert Gases	
Pressure (bar)		1.5~10.0	2.0~10.0
Eff. Section Area (mm <sup>2</sup> )-5bar		12.0	8.5
Ambient & Fluid Temp.		5~60° (41~140° F)	
Response Time (5bar)		25ms or Less	35ms or Less
Max. Working Frequency		5c/sec	3c/sec
Lubrication		Not Required ( Use ISO VG32#)	
Manual Override		Push Button (Standard), Lever Lock (Option)	
Coil Insulation Class		F-Class or Equivalent	
Permissible Voltage Variation		± 10% of Rated Voltage	
Off Min. Residual Voltage		AC:20% or Less / DC: 10% or Less	
Power Consumption		Holding-AC:3.5VA(60Hz) / DC:2.5W	

## Flow Graph



## The Material of Ports

- Valve Body : Die-Cast Aluminium
- Spool : Aluminium
- Seals : NBR
- Spring : Stainless
- Cap : Zinc Pressure Die-Cast
- Pilot Parts : Glass Filled Nylon
- Armature :Stainless Steel
- Armature Seals : Viton

\* The specification on each item can be amended without any prenotice to improve a performance.  
 \* The specification on each item can be different from actual specification.

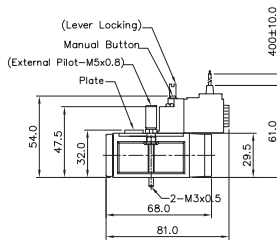
# WSIV2 1 1 - I P - SC1 - CN1 - A2

Valve Series	Function	Return Method	Int/Ext. Pilot	Manual Operator	Solenoid Coil Type	Connector Type	Voltage
<b>WSIV2 :</b> Solenoid Valve	1	0	I	0	0	0	0
	2	1	E	P	SC1	CN1	A2
	3	2		L	SG1	CD1	A1
<b>WSIP2 :</b> Pneumatic Valve	4	3			SD1	CZ1	A4
	5				SL1		D4
					SM1		D2

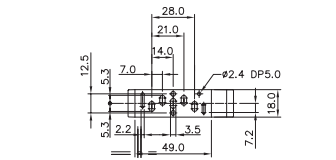
# WINMAN WSIV200 Serisi ISO Valfler / WSIV200 Series ISO Valves

## 5 port 2 position solenoid valve

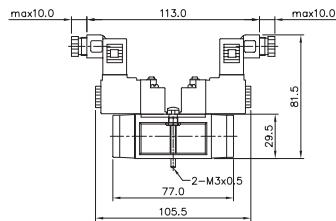
Single Solenoid  
**WSIV211-IP-SG1-\*\*\***



External Pilot  
**WSIV211-EP-SG1-\*\*\***

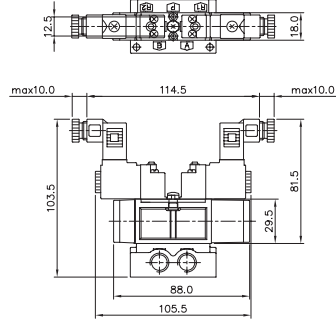


Double Solenoid  
**WSIV220-IP-SC1-CN1-\*\*\***



## 5 port 3 position solenoid valve

Closed Center  
**WSIV233-IP-SC1-CN1-\*\*\***



Exhaust Center  
**WSIV243-IP-SC1-CN1-\*\*\***

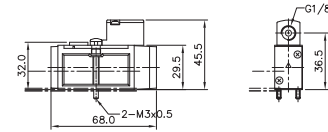
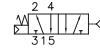


Pressure Center  
**WSIV253-IP-SC1-CN1-\*\*\***

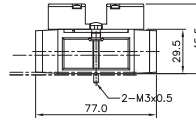
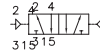


## 5 port 2 position solenoid valve

Single Pneumatic  
**WSIP211**

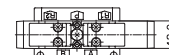
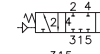


Double Pneumatic  
**WSIP220**

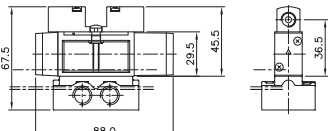
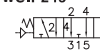


## 5 port 3 position solenoid valve

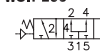
Closed Center  
**WSIP233**



Exhaust Center  
**WSIP243**



Pressure Center  
**WSIP253**



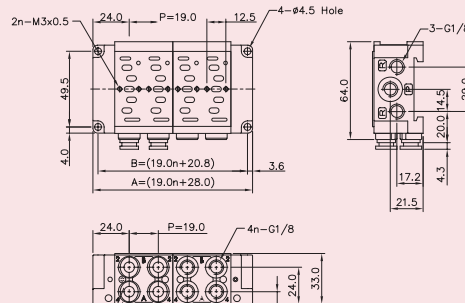
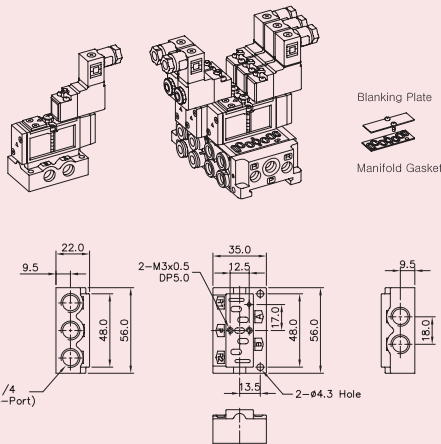
## Sub-base order type

WSIB2		1 - S	
Base Series	Port & Thread	Function	
WSIB2	0 None	S	Single Station Sub Base, 1/4 Port Without Pilot Ports
WSIV200	1 G	SP	Single Station Sub Base, 1/4 Port Without Pilot Ports
	2 NPT	DB	Single Station Sub Base, 1/4 Port Without Pilot Ports
		DCB	Double Modular Sub Base, 1/8 One-Touch Fitting
		E	End Cover, 1/4 Port
		EB	End Blanking Cover

## WSIB20 Single, Double Sub Base

(WSIV200 Solenoid, pneumatic valve attachment) Double sub-base dimensions

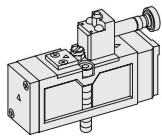
Single sub-base dimensions



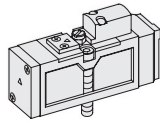
Item	n	2	4	6	8	10
B		58.8	96.8	134.8	172.8	210.8
A		66.0	104.0	142.0	180.0	218.0

Ordering Code WSIB20-BLK		Blanking Plate (Material : STS304)
Ordering Code WSIB21-E		Manifold Gasket. (Material : NBR)
Ordering Code WSIB20-EB		End Cover, 1/8 (Material : AI)
Ordering Code WSIB21-DB		End Blanking Cover (Material : AI)
Ordering Code WSIB21-DCB		Double Modular Sub Base, 1/8 (Material : AI)
Ordering Code WSIB20-DC6		Double Modular Sub Base 06 one-touch fitting (Material : AI)

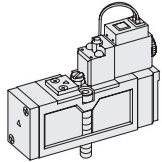
# WINMAN WSIV300 Serisi ISO Valfler / WSIV300 Series ISO Valves



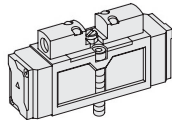
WSIV311-IP-\*\*\*



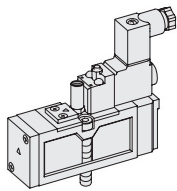
WSIP311



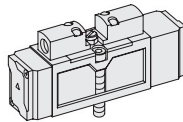
WSIV311-IP-SD1-\*\*\*



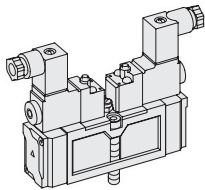
WSIP320



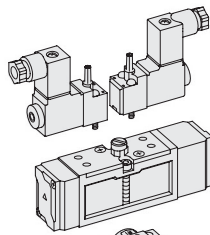
WSIV311-EP-SC1-CN1-\*\*\*



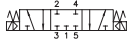
WSIP333



WSIV320-IP-SC1-CN1-\*\*\*

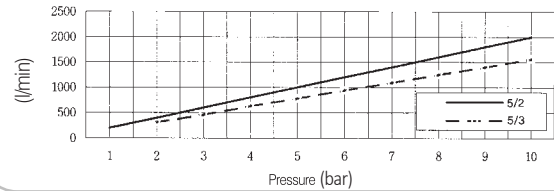


WSIV333-IP-SC1-CN1-\*\*\*



Item	Series Function	Solenoid, Pneumatic	
		5 Port 2 Position	5 Port 3 Position
Fluid		Compressed Air & Inert Gases	
Eff. Section Area (mm <sup>2</sup> )-5bar		1.5~10.0	2.0~10.0
Ambient & Fluid Temp.		5~60° (41~140F°)	
Max. Working Frequency		5c/sec	3c/sec
Response Time (5bar)		25ms or Less	35ms or Less
Lubrication		Not Required (Use ISO VG32#)	
Manual Override		Push Button (Standard), Lever Lock (Option)	
Coil Insulation Class		F-Class or Equivalent	
Permissible Voltage Variation		±10% of Rated Voltage	
Off Min. Residual Voltage		AC:20% or Less / DC: 10% or Less	
Power Consumption		Holding-AC:3.5VA(60Hz) / DC:2.5W	

### Flow Graph



### The Material of Ports

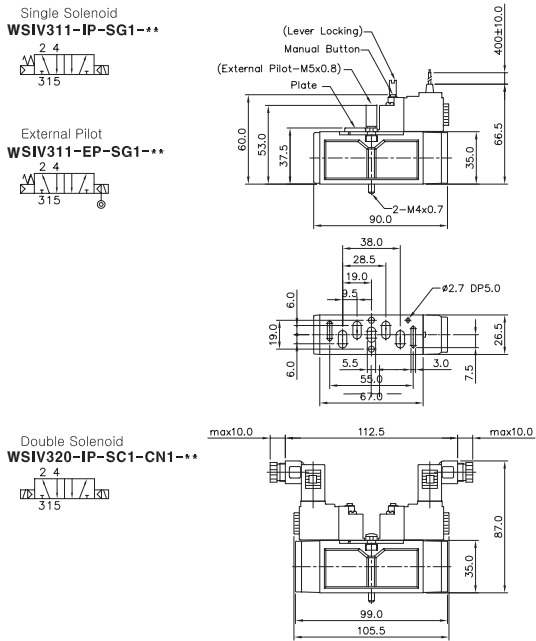
- Valve Body : Die-Cast Aluminium
- Spool : Aluminium
- Seals : NBR
- Spring : Stainless
- Cap : Zinc Pressure Die-Cast
- Pilot Parts : Glass Filled Nylon
- Armature :Stainless Steel
- Armature Seals : Viton

\* The specification on each item can be amended without any prenotice to improve a performance.  
 \* The specification on each item can be different from actual specification.

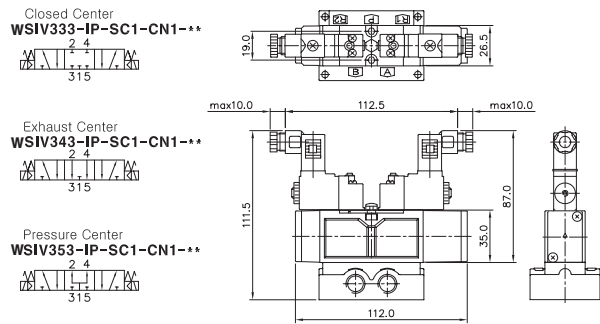
## WSIV3 1 1 - I P - SC1 - CN1 - A2

Valve Series	Function	Return Method	Int/Ext. Pilot	Manual Operator	Solenoid Coil Type	Connector Type	Voltage
<b>WSIV3 :</b> Solenoid Valve	1 5/2 Single	0 None	I Internal Pilot	0 None	0 None	0 None	0 None
	2 5/2 Double	1 Air+Spring	E External Pilot	P Push Non-Locking	SC1 3 Pin Connector Coil	CN1 Normal Connector	A2 AC 220V
	3 5/3 Closed Center	2 Air		L Lever Locking	SG1 Grommet/ Flying Leads		A1 AC 110V
<b>WSP3 :</b> Pneumatic Valve	4 5/3 ABR	3 Spring			SD1 Grommet/ Flying Leads With LED	CD1 Connector With LED	A4 AC 24V
	5 5/3 PAB				SL1 90 Degree Plug-in Wire Assembly With LED	CZ1 Connector With LED & Surge Suppressor	D4 DC 24V
					SM1 180 Degree Plug-in Wire Assembly With LED		D2 DC 12V

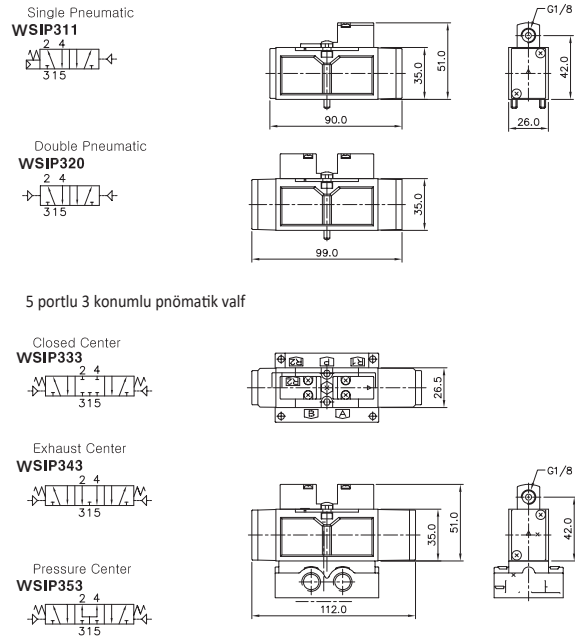
5 port 2 pozisyon solenoid valfi



5 port 3 konumlu solenoid valfi



5 portlu 2 konumlu pnömatik valf

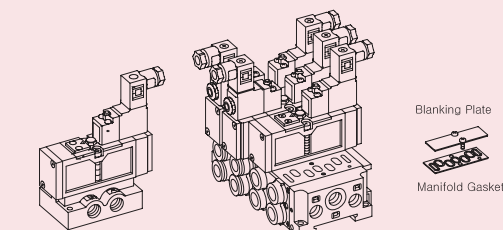


Sub-base order type

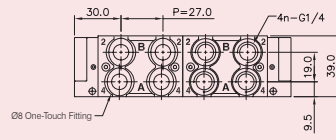
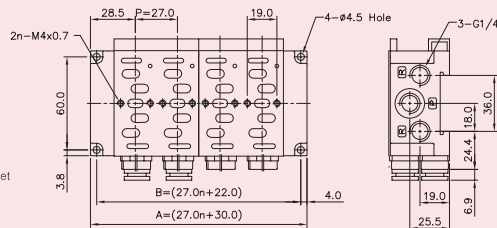
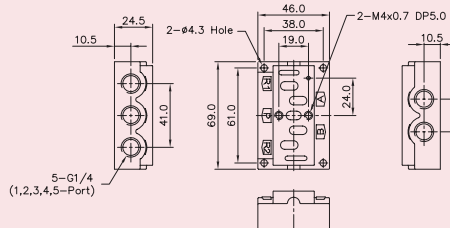
WSIB3		1 - S	
Base Series	Port & Thread	Function	
WSIB3	0 None	S	Single Station Sub Base, 1/4 Port Without Pilot Ports
WSIV300 Solenoid Valve	1 G	SP	Single Station Sub Base, 1/4 Port Without Pilot Ports
	2 NPT	DB	Single Station Sub Base, 1/4 Port Without Pilot Ports
		DCB	Double Modular Sub Base, Ø8 One-Touch Fitting
		E	End Cover, 1/4 Port
		EB	End Blanking Cover

WSIB30 Single, Double Sub Base

(WSIV300 Solenoid & Pneumatic Valve Use Valve Use Sub Base)



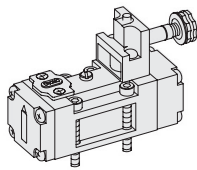
Single Station Sub Base Dimension



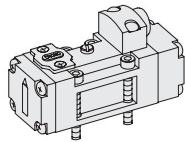
Item	n	n=STATION				
		2	4	6	8	10
A		76.0	130.0	184.0	238.0	292.0
B		84.0	138.0	192.0	246.0	300.0

Ordering Code <b>WSIB30-BLK</b>	Blanking Plate (Material: STS304)
	Manifold Gasket. (Material: NBR)
Ordering Code <b>WSIB31-E</b>	End Cover, 1/4 (Material: A)
Ordering Code <b>WSIB30-EB</b>	End Blanking Cover (Material: A)
Ordering Code <b>WSIB31-DB</b>	Double Modular Sub Base, 1/4 (Material: A)
Ordering Code <b>WSIB30-DCB</b>	Double Modular Sub Base Ø8 one-touch fitting (Material: A)

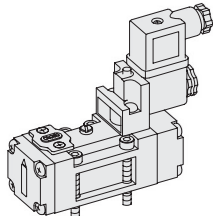
# WINMAN WSIV400 Serisi ISO Valfler / WSIV400 Series ISO Valves



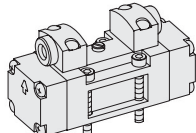
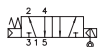
WSIV411-IP-\*\*\*



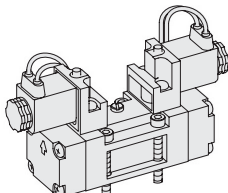
WSIP411



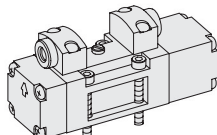
WSIV411-EP-SC2-CN2-\*\*\*



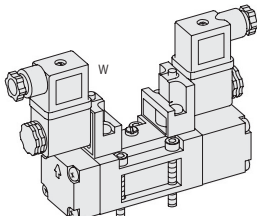
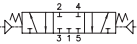
WSIP420



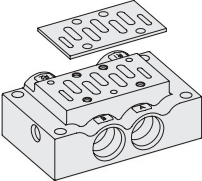
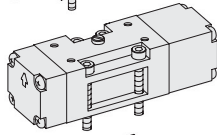
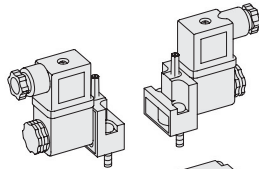
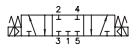
WSIV420-IP-SG2-\*\*\*



WSIP433

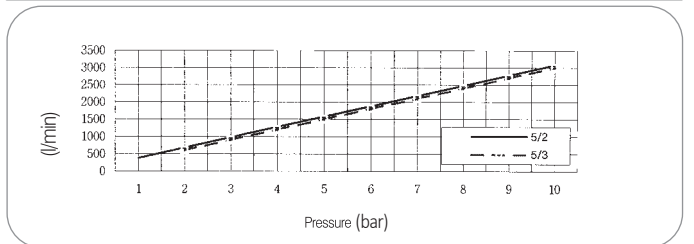


WSIV433-IP-SC2-CN2-\*\*\*



Item	Series Function	Solenoid, Pneumatic	
		5 Port 2 Position	5 Port 3 Position
Fluid		Compressed Air & Inert Gases	
Pressure (bar)		1.5~10.0	2.0~10.0
Eff. Section Area (mm <sup>2</sup> )-5bar		30.0	25.0
Ambient & Fluid Temp.		5~60° (41~140° F)	
Response Time (5bar)		30ms or Less	40ms or Less
Max. Working Frequency		3c/sec	1c/sec
Lubrication		Not Required (Use ISO VG32#)	
Manual Override		Push Button (Standard), Lever Lock (Option)	
Coil Insulation Class		F-Class or Equivalent	
Permissible Voltage Variation		±10% of Rated Voltage	
Off Min. Residual Voltage		AC:20% or Less / DC: 10% or Less	
Power Consumption		Holding-AC:5.5VA(60Hz) / DC:2.5W	

### Flow Graph



### The Material of Ports

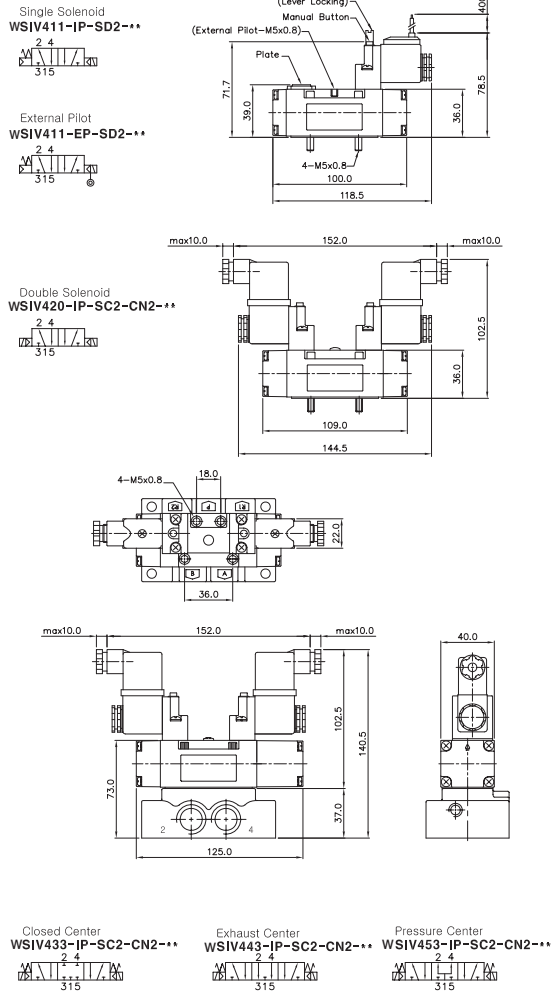
- Valve Body : Die-Cast Aluminium
- Spool : Aluminium
- Seals : NBR
- Spring : Stainless
- Cap : Zinc Pressure Die-Cast
- Pilot Parts : Glass Filled Nylon
- Armature :Stainless Steel
- Armature Seals : Viton

\* The specification on each item can be amended without any prenotice to improve a performance.  
 \* The specification on each item can be different from actual specification.

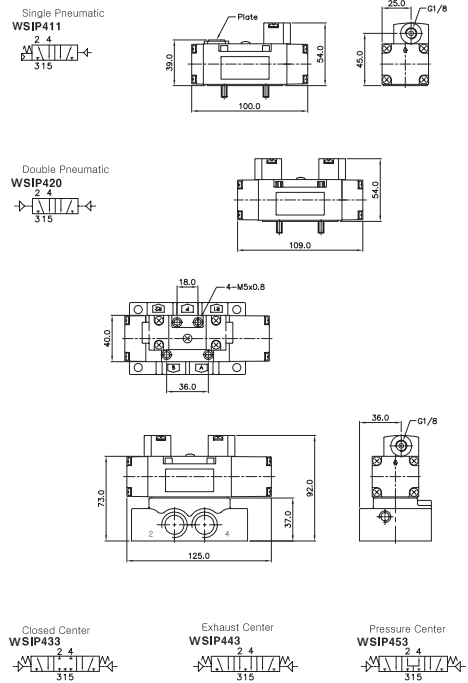
## WSIV4 1 1 - I P - SC2 - CN2 - A2

Valve Series	Function	Return Method	Int/Ext. Pilot	Manual Operator	Solenoid Coil Type	Connector Type	Voltage
<b>WSIV4:</b> Solenoid Valve	1	5/2 Single	0 None	I Internal Pilot	0 None	0 None	0 None
	2	5/2 Double	1 Air+Spring	E External Pilot	SC2 3 Pin Connector Coil	CN2 Normal Connector	A2 AC 220V
	3	5/3 Closed Center	2 Air		SG2 Grommet/ Flying Leads		A1 AC 110V
<b>WSIP4:</b> Pneumatic Valve	4	5/3 ABR	3 Spring		SD2 Grommet/ Flying Leads With LED	CD2 Connector With LED	A4 AC 24V
	5	5/3 PAB				CZ2 Connector With LED & Surge Suppressor	D4 DC 24V D2 DC 12V

5 port 2 pozisyon solenoid valfi



5 portlu 2 konumlu pnömatik valf

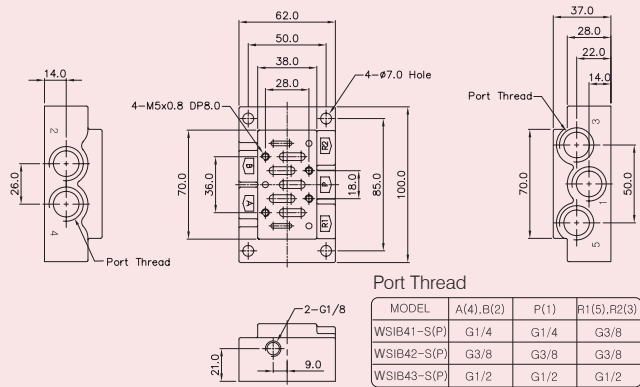
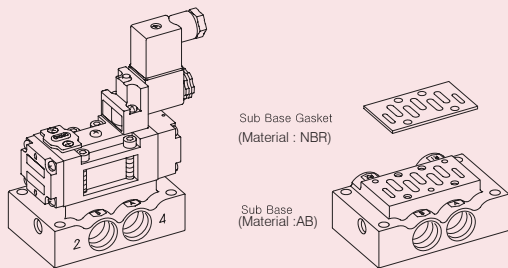


Sub-base order type

Base Series	Port & Thread	Function
WSIB4	0 None	S Single Station Sub Base, Without Pilot Ports
WSIV400 Solenoid Valve	1 G 1/4	SP Single Station Sub Base, Without Pilot Ports
	2 G 3/8	
	3 G 1/2	
	6 NPT 1/4	
	7 NPT 3/8	
	8 NPT 1/2	

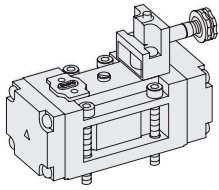
WSIB40 Single Sub Base

(WSIV400 Solenoid & Pneumatic Valve Use Valve Use Sub Base)  
Single Station Sub Base Dimension

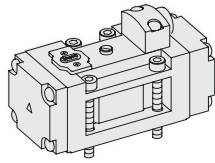


MODEL	A(4),B(2)	P(1)	R1(5),R2(3)
WSIB41-S(P)	G1/4	G1/4	G3/8
WSIB42-S(P)	G3/8	G3/8	G3/8
WSIB43-S(P)	G1/2	G1/2	G1/2

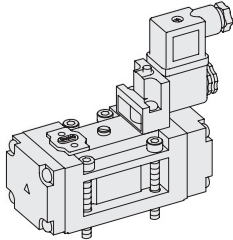
# WINMAN WSIV500 Serisi ISO Valfler / WSIV500 Series ISO Valves



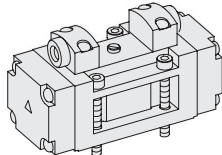
WSIV511-IP-\*\*\*



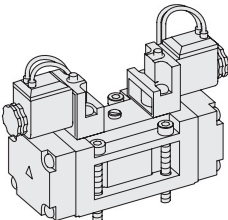
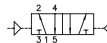
WSIP511



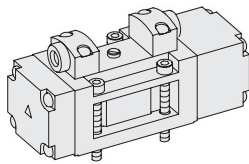
WSIV511-EP-SC2-CN2-\*\*\*



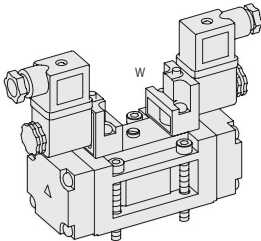
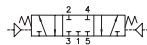
WSIP520



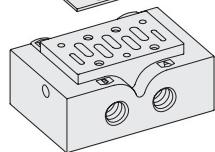
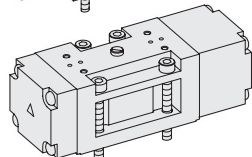
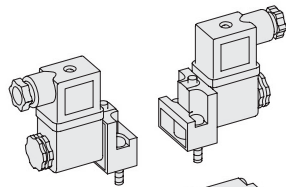
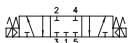
WSIV520-IP-SD2-\*\*\*



WSIP533

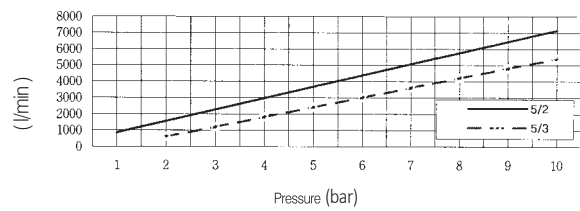


WSIV533-IP-SC2-CN2-\*\*\*



Item	Series Function	Solenoid, Pneumatic	
		5 Port 2 Position	5 Port 3 Position
Fluid		Compressed Air & Inert Gases	
Pressure (bar)		1.5~10.0	2.0~10.0
Eff. Section Area (mm <sup>2</sup> )-5bar		65.0	50.0
Ambient & Fluid Temp.		5~60° (41~140° F)	
Response Time (5bar)		35ms or Less	45ms or Less
Max. Working Frequency		3c/sec	1c/sec
Lubrication		Not Required ( Use ISO VG32#)	
Manual Override		Push Button (Standard), Lever Lock (Option)	
Coil Insulation Class		F-Class or Equivalent	
Permissible Voltage Variation		±10% of Rated Voltage	
Off Min. Residual Voltage		AC:20% or Less / DC: 10% or Less	
Power Consumption		Holding-AC:5.5VA(60Hz) / DC:2.5W	

### Flow Graph



### The Material of Ports

- Valve Body : Die-Cast Aluminium
- Spool : Aluminium
- Seals : NBR
- Spring : Stainless
- Cap : Zinc Pressure Die-Cast
- Pilot Parts : Glass Filled Nylon
- Armature :Stainless Steel
- Armature Seals : Viton

\* The specification on each item can be amended without any prenotice to improve a performance.  
 \* The specification on each item can be different from actual specification.

## WSIV5 1 1 - I P - SC2 - CN2 - A2

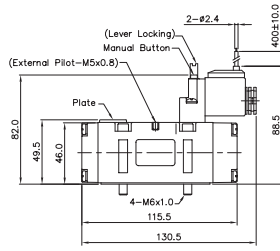
Valve Series	Function	Return Method	Int/Ext. Pilot	Manual Operator	Solenoid Coil Type	Connector Type	Voltage
<b>WSIV5 :</b> Solenoid Valve	1 5/2 Single	0 None	I Internal Pilot	O None	0 None	0 None	0 None
	2 5/2 Double	1 Air+Spring	E External Pilot	P Push Non-Locking	SC2 3 Pin Connector Coil	CN2 Normal Connector	A2 AC 220V
	3 5/3 Closed Center	2 Air		L Lever Locking	SG2 Grommet/ Flying Leads		A1 AC 110V
	4 5/3 ABR	3 Spring			SD2 Grommet/ Flying Leads With LED	CD2 Connector With LED	A4 AC 24V
<b>WSIP5 :</b> Pneumatic Valve	5 5/3 PAB					CZ2 Connector With LED & Surge Suppressor	D4 DC 24V D2 DC 12V

5 port 2 pozisyon solenoid valfi

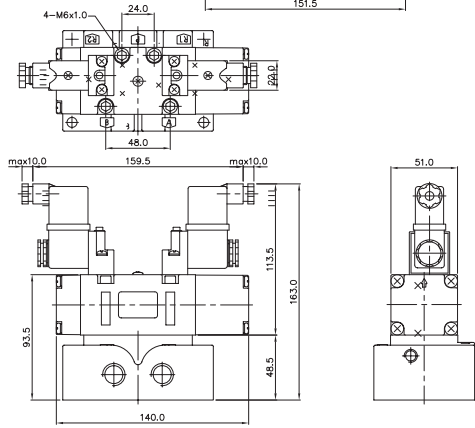
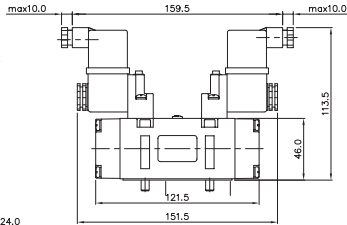
Single Solenoid  
**WSIV511-IP-SD2-\*\*\***



External Pilot  
**WSIV511-EP-SD2-\*\*\***



Double Solenoid  
**WSIV520-IP-SC2-CN2-\*\*\***

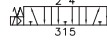


5 port 3 konumlu solenoid valfi

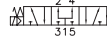
Closed Center  
**WSIV533-IP-SC2-CN2-\*\*\***



Exhaust Center  
**WSIV543-IP-SC2-CN2-\*\*\***

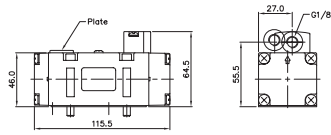


Pressure Center  
**WSIV553-IP-SC2-CN2-\*\*\***

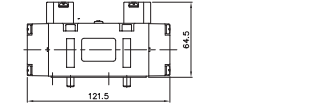


5 portlu 2 konumlu pnömatik valf

Single Pneumatic  
**WSIP511**



Double Pneumatic  
**WSIP520**

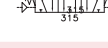


5 portlu 3 konumlu pnömatik valf

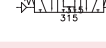
Closed Center  
**WSIP533**



Exhaust Center  
**WSIP543**



Pressure Center  
**WSIP553**



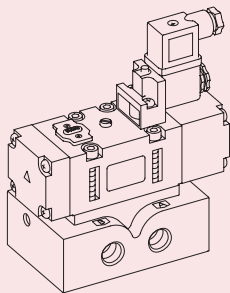
Sub Base Ordering Code

Base Series	Port & Thread	Function
WSIB5	0 None	S Single Station Sub Base, Without Pilot Ports
WSIV500 Solenoid Valve	2 G 3/8	SP Single Station Sub Base, Without Pilot Ports
	3 G 1/2	
	4 G 3/4	
	7 NPT 3/8	
	8 NPT 1/2	
	9 NPT 3/4	

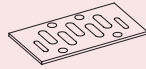
WSIB50 Single Sub Base

(SIV500 solenoidi için pnömatik valf bağlantısı)

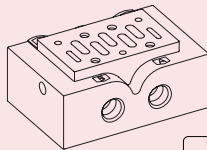
Single Station Sub Base Dimension



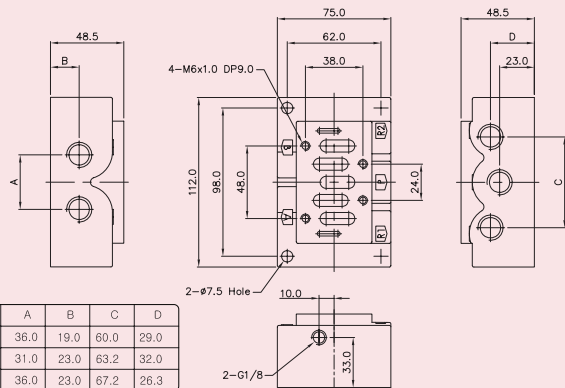
Sub Base Gasket  
(Material: NBR)



Sub Base  
(Material: Al)

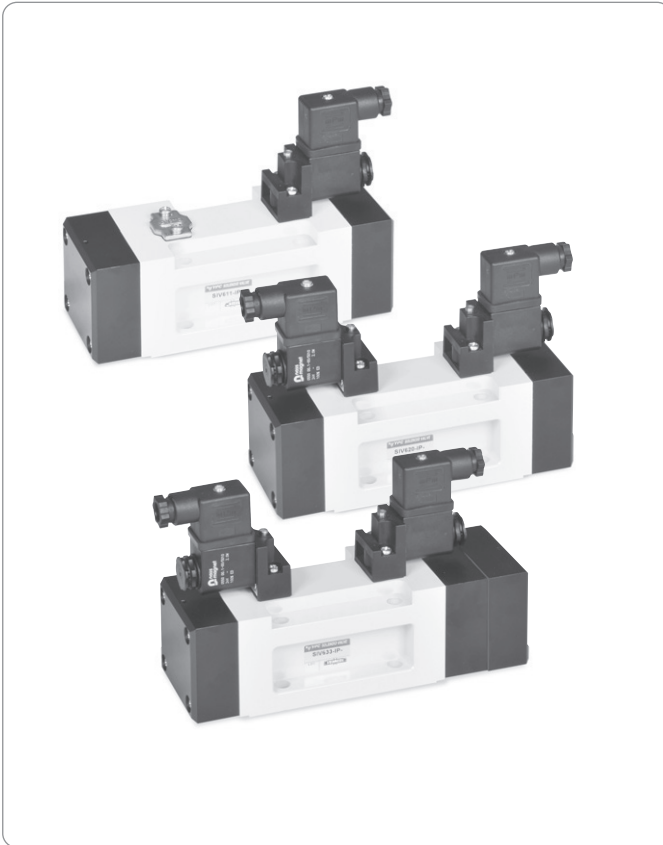


Thread	A	B	C	D
WSIB52-G3/8	36.0	19.0	60.0	29.0
WSIB53-G1/2	31.0	23.0	63.2	32.0
WSIB54-G3/4	36.0	23.0	67.2	26.3



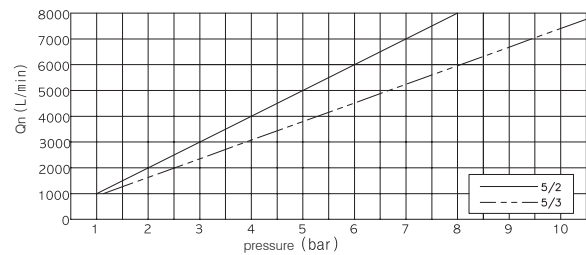


# WINMAN WSIV600 Serisi ISO Valfler / WSIV600 Series ISO Valves



Item	Series	Solenoid, Pneumatic	
	Function	5 Port 2 Position	5 Port 3 Position
Fluid	Compressed Air & Inert Gases		
Pressure (bar)	2.0-10.0		2.5-10.0
Eff. Section Area (mm <sup>2</sup> )-5bar	90.0		70.0
Ambient & Fluid Temp.	5-60° (41-140° )		
Response Time (5bar)	30ms or Less		40ms or Less
Max. Working Frequency	3c/sec		1c/sec
Lubrication	Not Required ( Use ISOVG32# )		
Manual Override	Push Button (Standard), Lever Lock (Option)		
Coil Insulation Class	F-Class or Equivalent		
Permissible Voltage Variation	±10% of Rated Voltage		
Off Min. Residual Voltage	AC:20% or Less / DC: 10% or Less		
Power Consumption	Holding-AC:5.5VA(60Hz) / DC:2.5W		

## Flow Graph



- Valve body: Die-cast aluminium
- Spool : Aluminium
- Spool Seals : Rubber Coating
- Cap : Zinc pressure die-cast
- Pilot parts : Glass filled Nylon
- Spool : Aluminium
- Spool Seals : Rubber Coating
- Cap : Zinc pressure die-cast

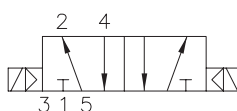
## WSIV6 1 2 - I P - SC2 - CN2 - A2

Valve Series	Return Method		Int/Ext. Pilot		Manual Operator		Solenoid Coil Type		Connector Type		Voltage								
	1	2	I	E	P	L	SC2	SG2	SD2	CN2	CD2	CZ2	0	A2	A1	A4	D4	D2	
<b>WSIV6 :</b>	5/2 Single	5/2 Double	0 None	1 Air+Spring	2 Air	3 Spring	0 None	1 None	2 None	0 None	1 None	0 None	0 None	0 None	A2 AC 220V	A1 AC 110V	A4 AC 24V	D4 DC 24V	D2 DC 12V

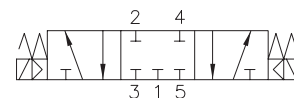
### WSIV612



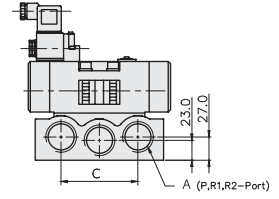
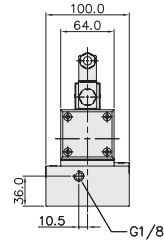
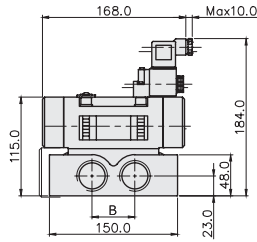
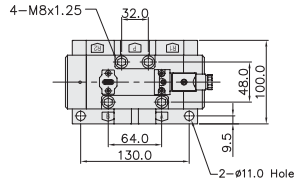
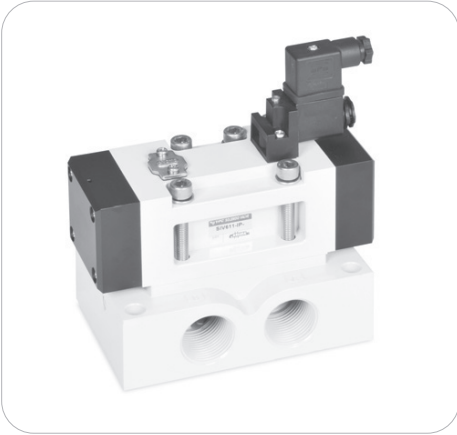
### WSIV620



### WSIV633

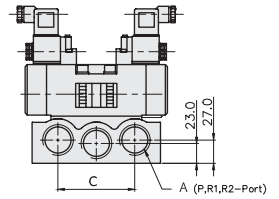
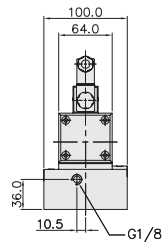
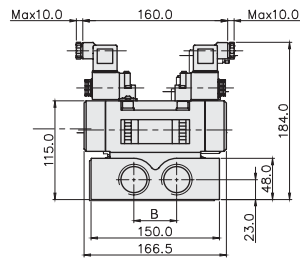
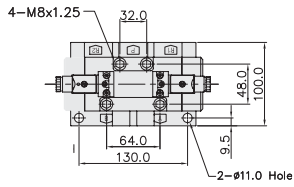
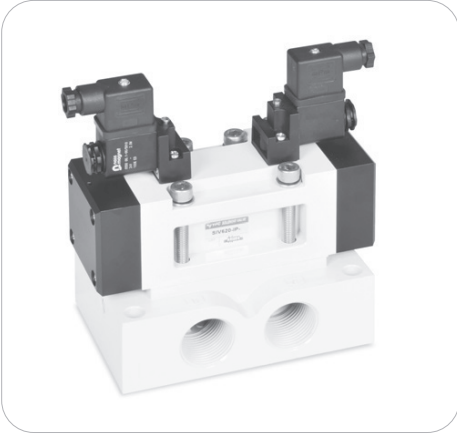


5 port 2 pozisyon solenoid valf



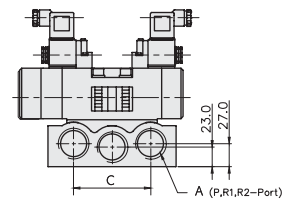
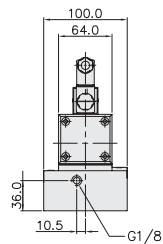
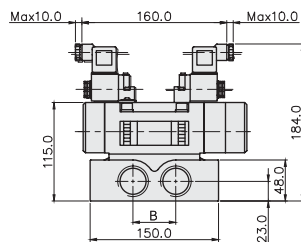
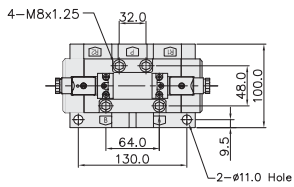
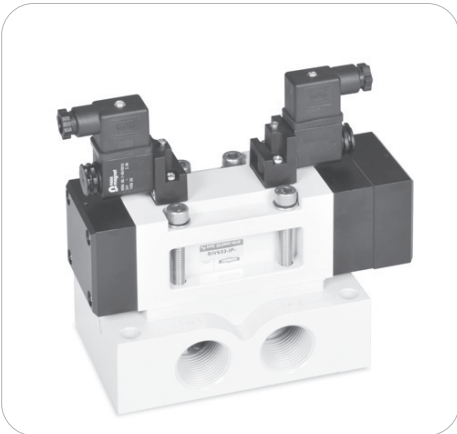
Tür	A	B	C
SIB64	G3/4	42.5	84.0
SIB65	G1	50.0	90.0

5 port 3 konumlu solenoid valf



Tür	A	B	C
SIB64	G3/4	42.5	84.0
SIB65	G1	50.0	90.0

5 port 3 konumlu solenoid valf



Tür	A	B	C
SIB64	G3/4	42.5	84.0
SIB65	G1	50.0	90.0