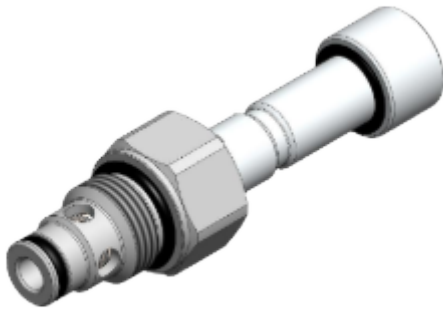


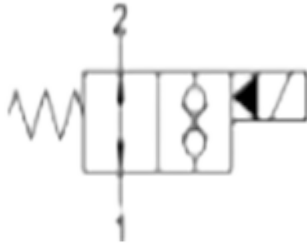
WINMAN WY0.S08 Serisi Solenoid Valfler / WY0.S08 Series Solenoid Valves



Açıklama / Description

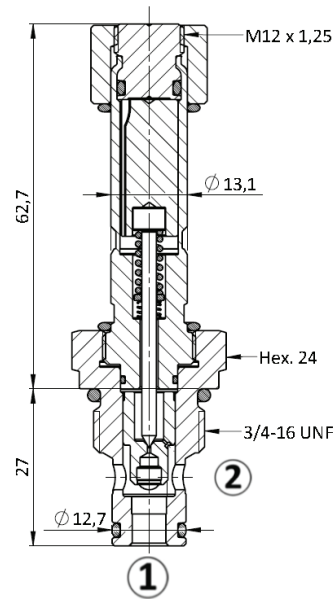
Solenoid operated, 2-way 2-positions, normally open, piloted poppet type, screw-in cartridge valve. Typically used as a blocking or load holding device for high pressure circuits. When the coil is de-energized, the WY0.S08 allows flow from 2 to 1, while flow from 1 to 2 is severely restricted. When the coil is energized the valve closes, blocking flow from 1 to 2 from 2 to 1. In this mode, flow from 1 to 2 is allowed once the pressure overcomes the force of the solenoid. The rigid design using a 1-piece body contributes to minimize the effect of eccentricities in cavity and provides great reliability. Low pressure drop thanks to optimized flow path.

Sembol / Symbol



SAE Cartridge - 350 bar
NO Single Lock Pilot Operated
Poppet Type

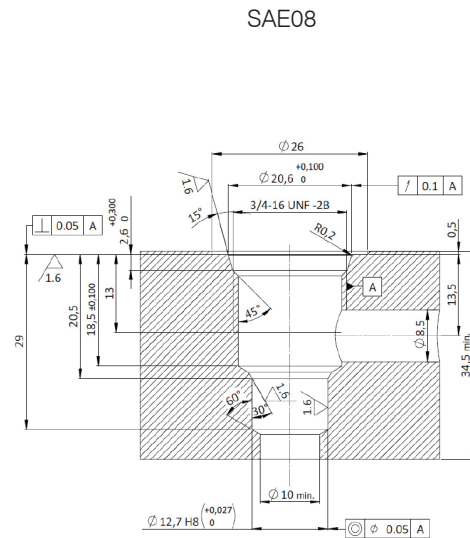
Enine Kesit / Cross Section



Teknik Özellikler / Technical Features

All external surfaces are zinc plated and corrosion-proof. All valve parts are made of high strength steel. Poppet is hardened and ground to ensure minimal wear and extended service life. Coil seals protect the solenoid system. Manual override option. Industry SAE common cavity. It replaces the previous WY0.S08.

Boşluk Detayları / Cavity Details

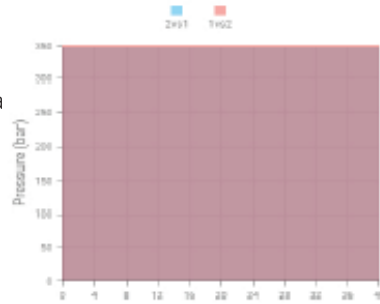


WINMAN WVY0.S08 Serisi Solenoid Valfler / WVY0.S08 Series Solenoid Valves
Teknik Veri / Technical Data

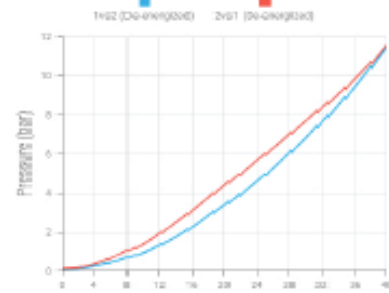
Maximum operating pressure	350 bar
Maximum flow	40 l/min
Maximum internal leakage	0,25 cm ³ /min @ 350 bar
External component treatment	Zn/Fe - standard (96h) Zn/Ni (720h)
Switch ON Time	100 ms
Switch OFF Time	50 ms
O-ring Temperature Range	-30 ° C to 110 ° C (standard sealing NBR - BUNA - N) -35 ° C to 140 ° C - HNBR - Upon customer request -23 ° C to 225 ° C - FKM - Upon customer request
Oil Temperature Range	-30° C to 110° C
Fluids	Mineral - based or synthetics with lubricating properties
Viscosities	7,4 to 420 cSt
Minimum pull-in voltage	85% of nominal
Filtration	20/18/15 ISO 4406 (maximum filtration admitted)
Orientation	No restrictions
Installation torque	40 -45 Nm (Hex. 24)
Oil testing condition	ISO VG 46 cSt
Seal kit code	SK.030 and SK.027 (coil)
Coil	18W (for more details see page X)
Weight	0,124 kg

Performans Detayları / Performance Details

Note: The performance chart illustrates flow handling capacity 2 to 1 (de-energized).
p/Q curves are recorded at TOil = 40°C and 46 cSt.

Performance Limits


Pressure (bar)



Flow (l/min)

Sipariş Kodu / Ordering Code

NOTE
Solenoid valves are designed to work with D.C. current supply, for A.C. a RAC coil and connector with rectifier must be used.

NOTE
Customized nut can be selected

VALVE BASIC CODE
W V Y 0 . S 0 8 . 0 * . * 0 *

MARKING
0 = Standard factory marking. Customized marking can be done upon request.

SIZE
Code: S08
Other available options: 3/4-16 UNF with Ø12,7 nose size

FILTRATION

Model code	Type of filter
H	Standard filter (mesh size 280 µm)
N	No filter

NOTE
Customized filters can be done upon request.

MANUAL OVERRIDE

Model code	Type of override
0	No override
2	Push and Twist
3	Push pin
4	Push knob
8	Screw

Note: All Solenoid cartridge valves listed in the present catalogue are designed to work with D.C. power supply. To work with A.C. power supply, a RAC coil and connector with rectifier must be used. For any additional information, please contact your Sales contact representative.