

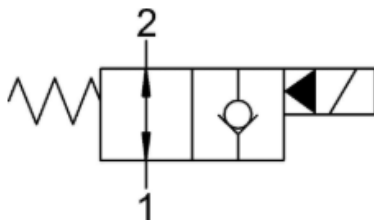
WINMAN WVK0.S10 Serisi Solenoid Valfler / WVK0.S10 Series Solenoid Valves



Açıklama / Description

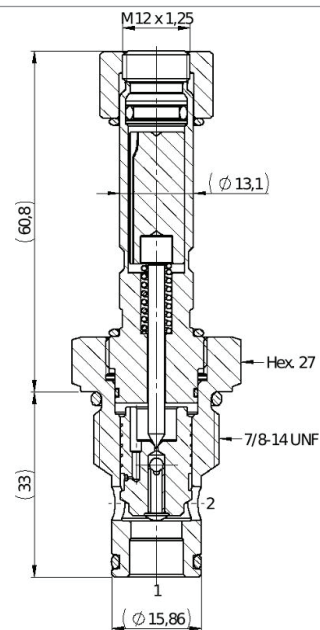
A solenoid valve operated, 2-way 2-positions, normally open, piloted poppet type, screw-in cartridge valve. Typically used as a blocking or load holding device for high pressure circuits. When the coil is de-energized, the SVK0.S10 allows flow bidirectionally from 2 to 1, and from 1 to 2. When the coil is energized the valve closes, blocking flow from 2 to 1. In this mode, flow from 1 to 2 is allowed once the pressure overcomes the force of the solenoid. The rigid design using a 1-piece body contributes to minimize the effect of eccentricities in cavity and provides great reliability. Low pressure drop thanks to optimized flow path.

Sembol / Symbol



SAE Cartridge - 350 bar
NO Single Lock Pilot Operated
Poppet Type

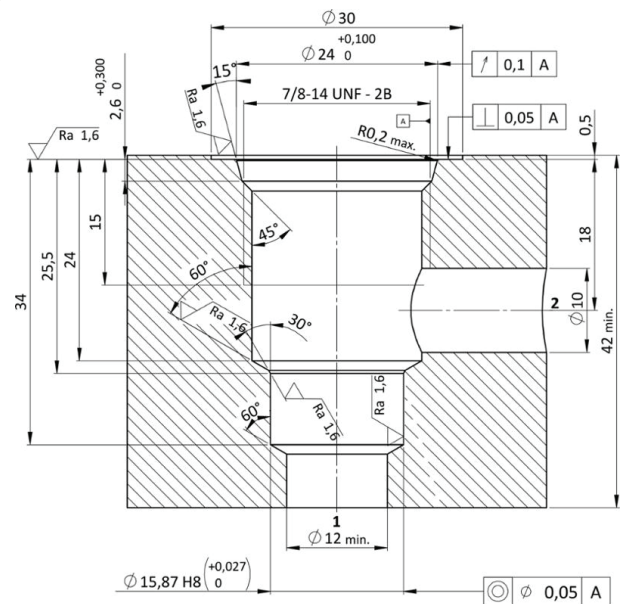
Enine Kesit / Cross Section



Teknik Özellikler / Technical Features

All external surfaces are zinc plated and corrosion-proof. All valve parts are made of high strength steel. Poppet is hardened and ground to ensure minimal wear and extended service life. Coil seals protect the solenoid system. Manual override options.
Industry SAE common cavity..

Boşluk Detayları / Cavity Details



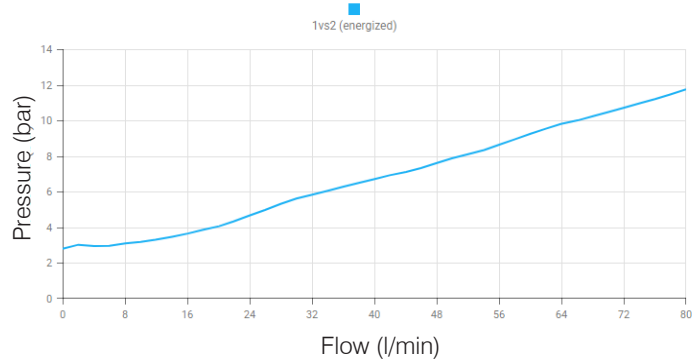
WINMAN WVK0.S10 Serisi Solenoid Valfler / WVK0.S10 Series Solenoid Valves

Teknik Veri / Technical Data

Maximum operating pressure	350 bar
Maximum flow	80 l/min
Switch ON Time	100 ms
Switch OFF Time	50 ms
Maximum internal leakage	0,25 cm ³ /min @ 350 bar
External component treatment	Zn/Fe - standard (96h) Zn/Ni (720h)
O-ring Temperature Range	-30° C to 110° C (standard sealing NBR - BUNA-N) -35 ° C to 140 ° C - HNBR - Upon customer request -23 ° C to 225 ° C - FKM - Upon customer request
Oil Temperature Range	-30° C to 110° C
Fluids	Mineral - based or synthetics with lubricating properties
Viscosities	7,4 to 420 cSt
Minimum pull-in voltage	85% of nominal
Filtration	20/18/15 ISO 4406 (maximum filtration admitted)
Orientation	No restrictions
Installation torque	65 - 75 Nm (Hex. 27)
Oil testing condition	ISO VG 46 cSt
Seal kit code	SK.032 and SK.027 (coil)
Coil	22 W
Weight	0,164 kg

Performans Detayları / Performance Details

Note: The performance chart illustrates flow handling capacity in both directions 1 to 2 and 2 to 1 (de-energized).
p/Q curves are recorded at TOil = 40°C and 46 cSt. .



Sipariş Kodu / Ordering Code

NOTE
Solenoid valves are designed to work with D.C. current supply, for A. C. a RAC coil and connector with rectifier must be used.

NOTE
Customized nut can be selected

W V K 0

VALVE BASIC CODE
0= Standard. S= Inductive position switch upon request

SIZE
7/8-14 UNF with Ø15,86 nose size

S 1 0

MARKING
0 = Standard factory marking. Customized marking can be done upon request.

0 *

FILTRATION

Model code	Type of filter
N	No filter

MANUAL OVERRIDE

Model code	Type of override
0	No override
2	Push and Twist
3	Push pin
4	Push knob
8	Screw