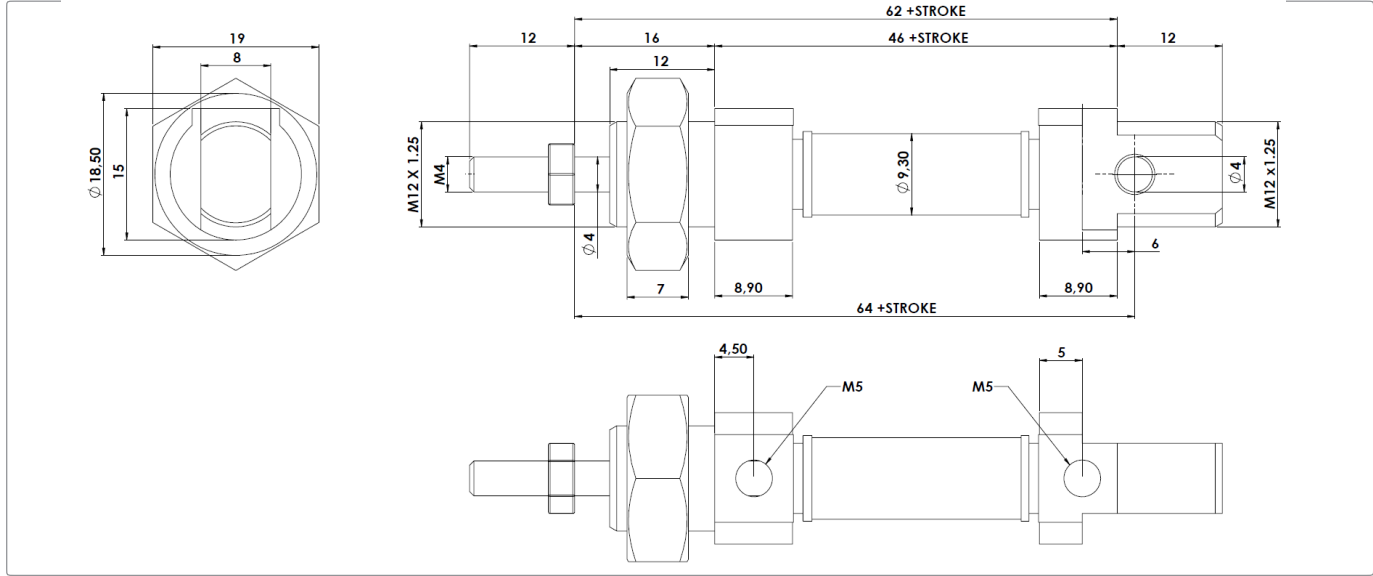


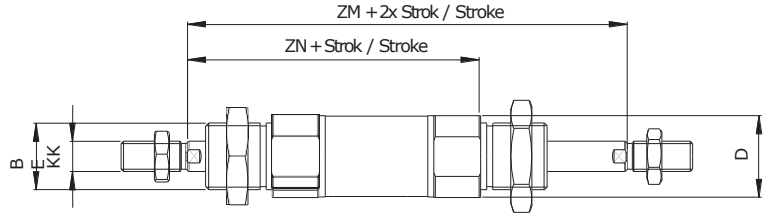
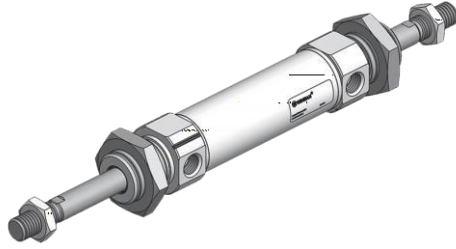
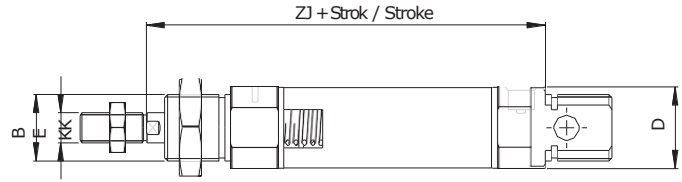
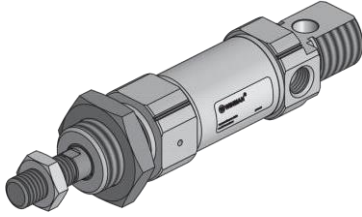
**WSSC 008 - Serisi ISO 6432 Silindirler / WSSC 008- Series ISO 6432 Cylinders**

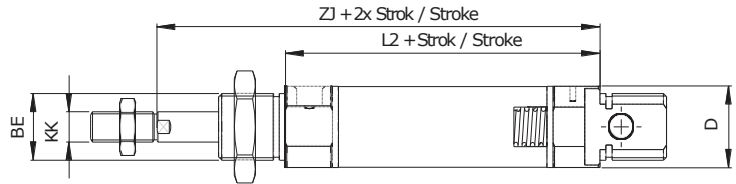
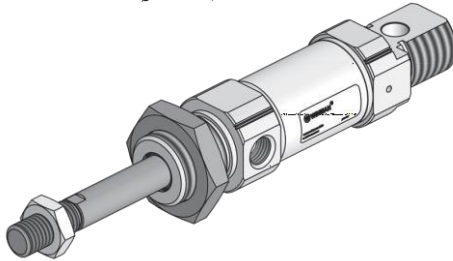
Özellikler / Specification	
Piston Çapı / Bore Size	8
Çalışma Tipi / Acting Type	Çift Etkili / Double Acting
Akışkan / Fluid	Hava (40µm filtrelenmiş) / Air (40µm filtered)
Çalışma Basıncı / Op. Pressure	< 10 Bar
Sıcaklık / Temperature	0 ~ +80 °C
Manyetik / Magnetic	Opsiyonel / Optional
Hız / Speed Range	< 800 mm/s
Sensör / Sensör Switches	WT-05/WT-15 + BK81

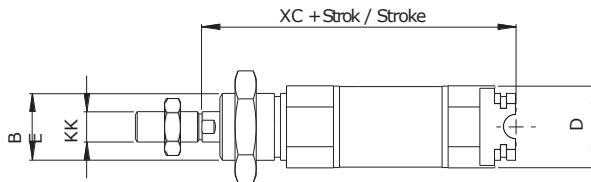
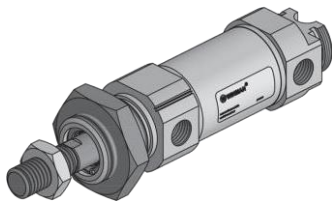
**Teknik Çizim / Technical Drawing**

**Sipariş Kodu / Ordering Code**

MODEL	OPSİYON OPTIONS	MANYETİK MAGNETIC	YASTIKLAMA CUSHONING	ÇAP DIA.	STROK STROKE	MİL UZUNLUĞU ROD LENGHT	DIŞ TİPİ SCREW TYPE	DIŞ ÖLÇÜSÜ SCREW SIZE	DIŞ UZUNLUĞU SCREW LENGHT
WSSC	D	M	YY	008	0050	L25	F	ZM8.H1.0	E15

<b>BOŞ : STANDART</b> <b>D : ÇİFT MİLLİ</b> <b>J : STROK AYARLI</b> <b>HR : DÖNMEZ MİLLİ</b> <b>FS : ÖNDEN YAYLI</b> (50mm ye Kadar) <b>RS : ARKADAN YAYLI</b> (50mm ye Kadar) <b>V : SICAĞA DAYANIKLI</b> 150° Sıcaklığa Kadar	- Blank Standart - Double Rod - Stroke Adjustable - Hegzagonal Roc - Front Spring (Up to 50mm) - Rear Spring (Up to 50mm) - Heat Resistance (Up to 150°C)	<b>BOŞ : MANYETİKSİZ</b> Blank : Without Magnet <b>M : MANYETİK</b> M : With Magnet	<b>BOŞ : YASTIKSIZ</b> Blank : Uncushioned <b>YY : YASTIKLI</b> YY : Cushinoed	<b>PİSTON ÇAPı</b> (mm) Piston Dia	<b>STROK (mm)</b> Stroke	<b>LX (mm)</b> - BOŞ : STANDART Blank : Standart	<b>F : DIŞİ</b> Female BOŞ : STANDART Blank : Standart	<b>Zx : ÇAP</b> Dia <b>Hx : Hatve</b> Pitch BOŞ : STANDART Blank : Standart	<b>Ex (mm)</b> BOŞ : STANDART Blank : Standart
--	---	--	---	--	-----------------------------	---	---	--	--

**WSSC - Serisi ISO 6432 Silindirler / WSSC - Series ISO 6432 Cylinders**
**Çift Milli Silindirler / Trough Rod Cylinders**
**WSSC.M.YY.008.0050.D**  
Ø Strok / Stroke

**Önden Yaylı Silindirler / Single Act. Front Spring Cylinders**
**WSSC.M.YY.008.0050.FY**  
Ø Strok / Stroke

 50 mm kurs üzeri için bilgi alınız.  
 Contact us above 50 mm stroke

**Arkadan Yaylı Silindirler / Rear Spring Cylinders**
**WSSC.M.YY.008.0050.RY**  
Ø Strok / Stroke

 50 mm kurs üzeri için bilgi alınız.  
 Contact us above 50 mm stroke

**Kısaltılmış Silindirler / Short Cap Cylinders**
**WSSC.M.YY.008.0050.K3**  
Ø Strok / Stroke


Ø mm	ZM	ZN	ZJ	L2	XC ±1	BE	KK	D Ø
8	78	62	62	46	64	M12X1.25	M4X0.70	16