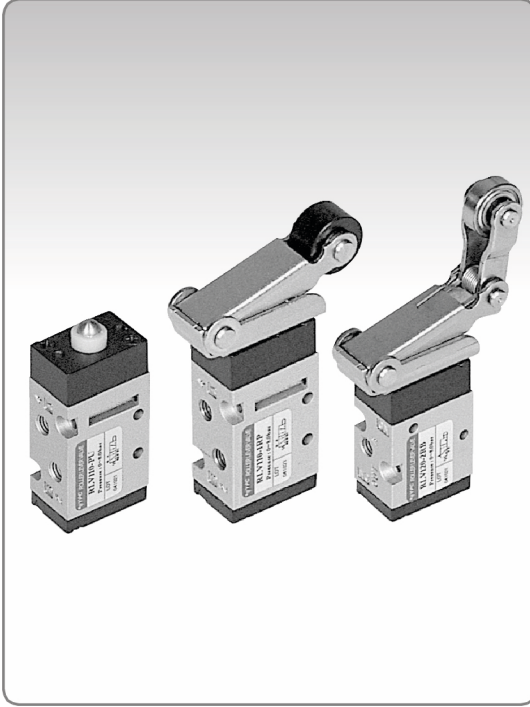
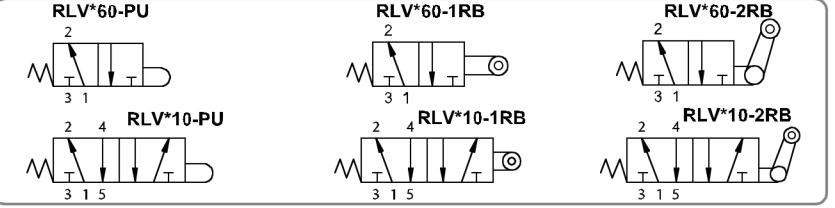
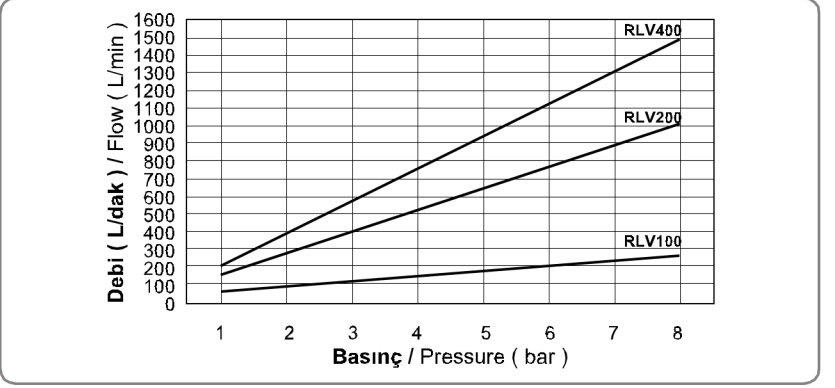


**RLV Serisi Makaralı Valfler ( 3/2 - 5/2 ) / RLV Series Roller Valves ( 3/2 - 5/2 )**

**Sembol / Symbol**

**Akış Diyagramı / Flow Chart**

**Özellikler / Specification**

| Model / Model                                   | RLV100   | RLV200 | RLV400 |
|---|--|--------|--------|
| Akışkan / Fluid                                 | 40µ filtrelenmiş hava / Air ( to be filtered by 40µ filter element ) |        |        |
| Çalışma Tipi / Operating                        | 5/2, 3/2   |        |        |
| Bağlantı Ölçüsü / Port Size                     | M5   | 1/8"   | 1/4"   |
| Basınç Aralığı / Pressure Range                 | 0~8.0 bar / 0~0.8MPa / 0~114Psi                                      |        |        |
| Kesit Alan / Sectional Area ( mm <sup>2</sup> ) | 3.5  | 12.6   | 19.0   |
| Sıcaklık / Temperature                          | 5 ~ 60°C   |        |        |
| Yağlama / Lubrication                           | Gerektirmez / Not Required ( ISO VG32 )                              |        |        |

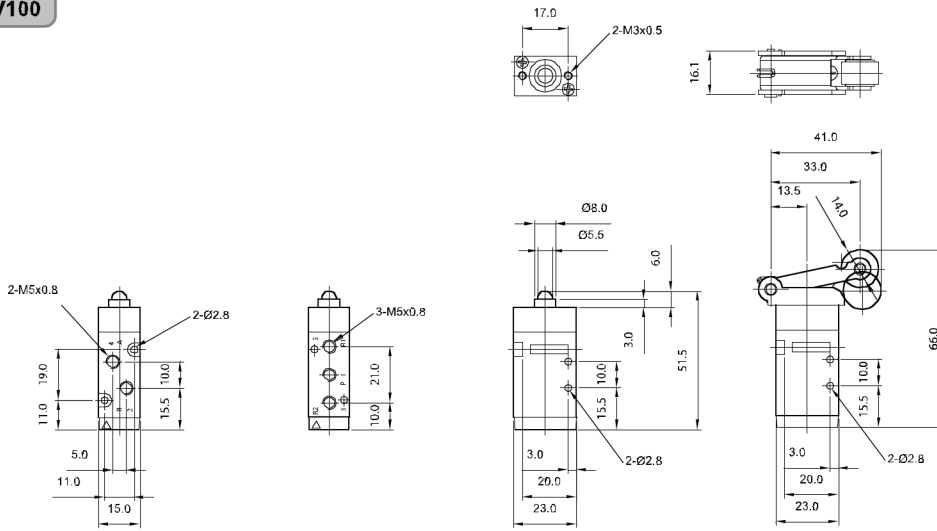
**Sipariş Kodu / Ordering Code**

| RLV1  | 1  | 0                      | PU   |
|---|--|------------------------|--|
| Model / Model   | Fonksiyon / Function   | Diş Tipi / Thread Type | Anahtar Tipi / Switch Type   |
| <b>RLV1: M5 x 0.8</b><br>Bağlantı Deliği / Port<br><b>RLV2: 1/8"</b><br>Bağlantı Deliği / Port<br><b>RLV4: 1/4"</b><br>Bağlantı Deliği / Port | <b>1: 5/2 Yay Dönüşlü</b><br>5/2 Spring Return<br><br><b>6: 3/2 Yay Dönüşlü</b><br>3/2 Spring Return | <b>0: G</b>            | <b>PU: Pimli / Pushrod</b><br><br><b>1RP: Plastik Makaralı / Two-Way Plastic Roller Lever</b><br><br><b>1RB: Rulman Makaralı / Two-Way Bearing Roller Lever</b><br><br><b>2RP: Mafsallı Plastik Makaralı / One-Way Plastic Roller Lever</b><br><br><b>2RB: Mafsallı Rulman Makaralı / One-Way Bearing Roller Lever</b> |

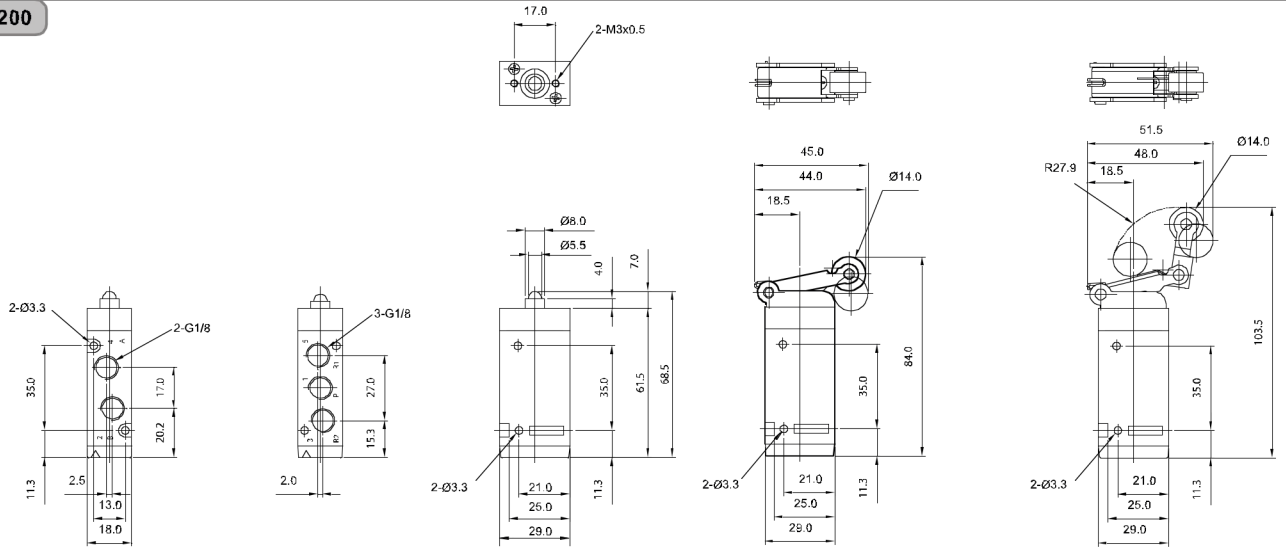
**RLV Serisi Makaralı Valfler ( 3/2 - 5/2 ) / RLV Series Roller Valves ( 3/2 - 5/2 )**

**Teknik Çizimler / Technical Drawings**

**RLV100**



**RLV200**



**RLV400**

