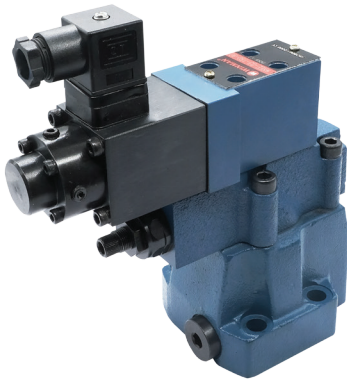


PROPORTIONAL PILOT-OPERATED PRESSURE REDUCING VALVE (WREE)



Specification	03	06
Maximum Pressure (Bar)	315	315
Maximum Flow (l/min)	80	200
Secondary pressure Regulating range (Bar)	See model description	
Rated current (mA)	800	
Coil resistance (Ω)	19.5	
Hysteresis (%)	< ±2.5	
Repeatability (%)	< ±2	
Cleanliness	Filter is recommended for the highest fluid pollution degree; the lowest specific filtration resistance according to ISO 4406 (C) 20/18/15.	

Comprised of proportional directly-operated relief valve, pressure limiting valve and reducing valve, this product controls a secondary pressure from the system pressure according to value of input current.

Model instruction

WREE - * - * * Y - 90 *

Proportional pilot-operated pressure reducing valve

Specification
03 :DN10
06 :DN20

Secondary pressure regulating range
70 : 70 Bar
160 : 160Bar
250 : 250 Bar

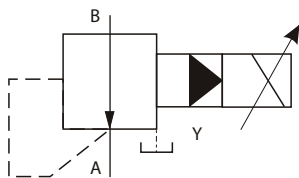
Remarks

Design serial number

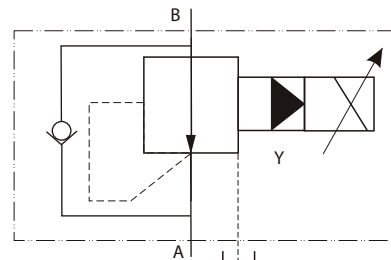
Control oil
Y : intl cntrl extl disch

Default :Without check valve
D : With check valve

Code symbol



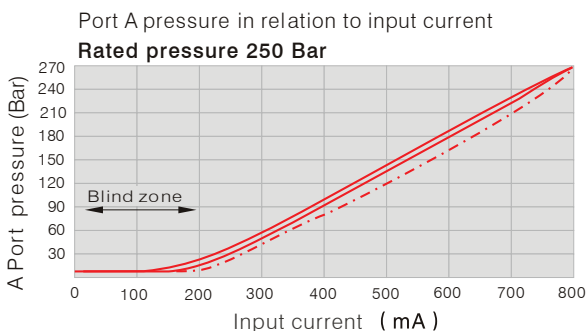
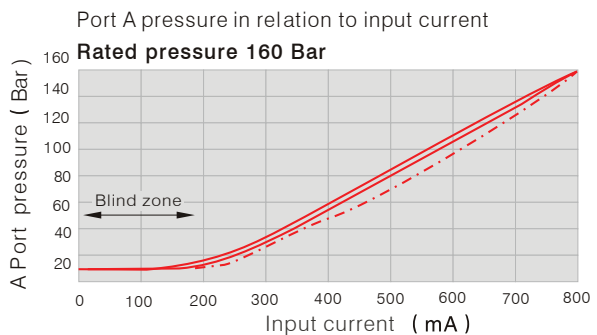
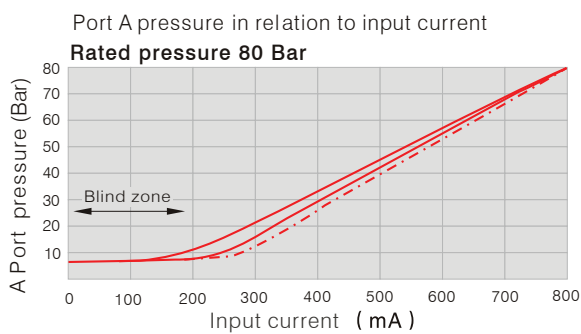
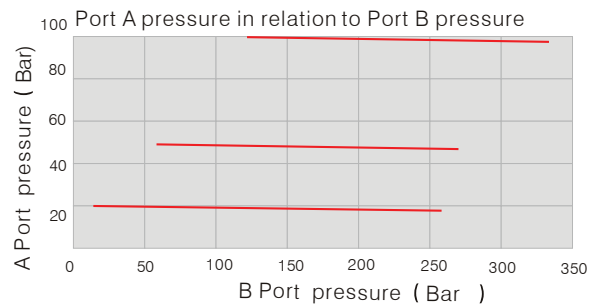
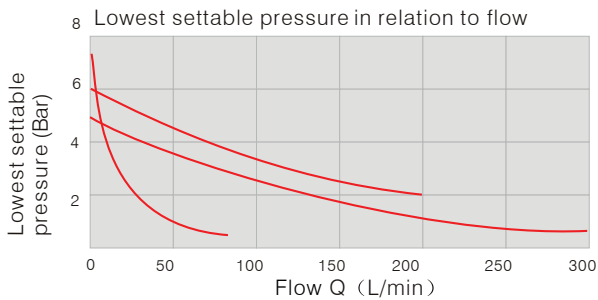
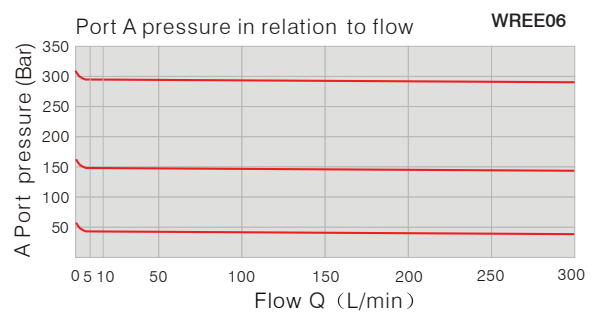
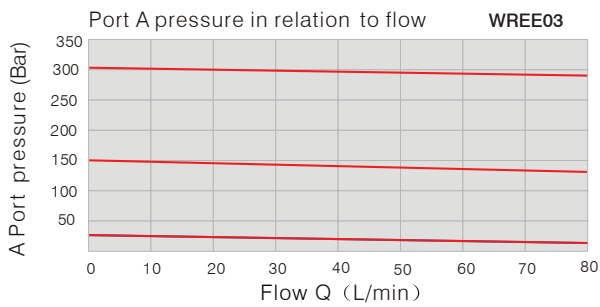
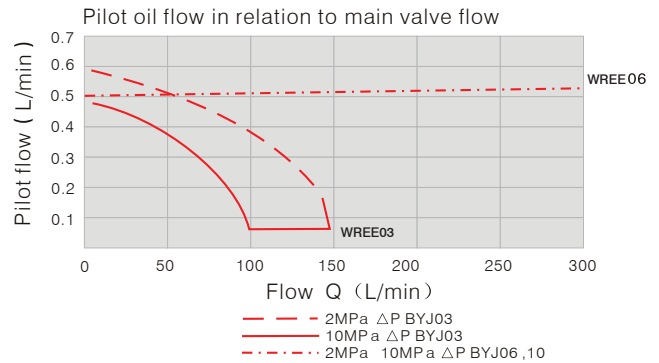
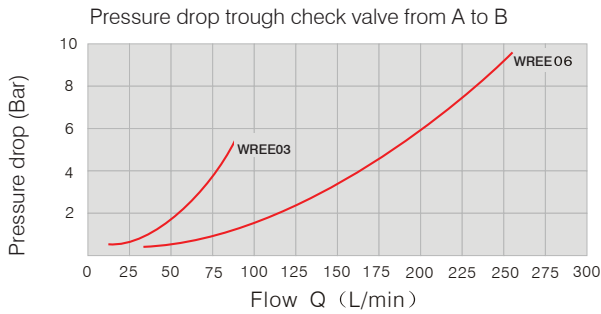
WREE...Y



WREE...DY

PROPORTIONAL DIRECTIONAL PRESSURE REDUCING VALVE (WREE)

03,06,10 Model Characteristic Curves (Measured at $v=36 \times 10^{-6} \text{ m}^2/\text{S}$ $t=50^\circ\text{C}$)



Delay:

With shake dither ————

No Shake - - - - -

WREE 03, 06 Model are tested under 27L/min.

Note: In order to get the lowest rated pressure, pilot initial current is not more than 0.1A

PROPORTIONAL PILOT-OPERATED PRESSURE REDUCING VALV (WREE)

External Dimensions

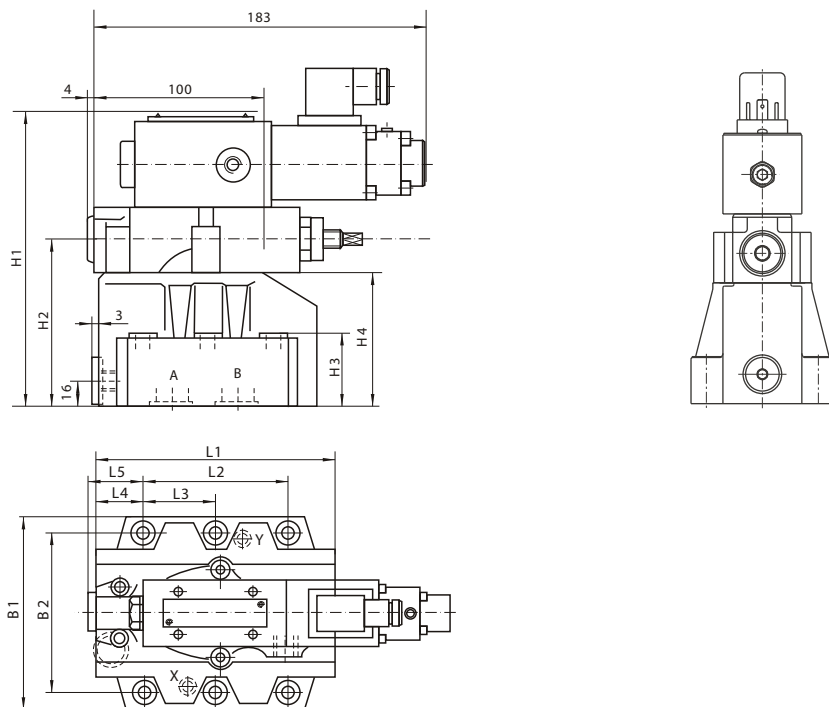
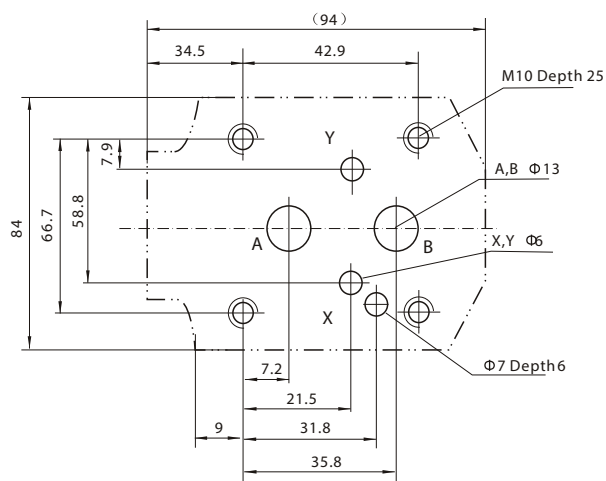
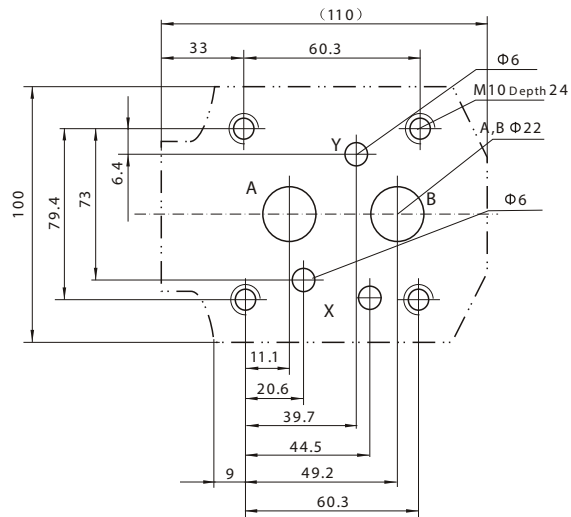


Plate Size

WREE-03



WREE-06



The surface, connecting with the valve, should be Ra0.8 roughness, and 0.01/100mm flatness.

Specification	B1	B2	H1	H2	H3	H4	L1	L2	L3	L4	L5
WREE-03	85	66.7	190	92	28	72	90	42.9	-	35.5	34.5
WREE-06	102	79.4	200	102	38	82	112	60.3	-	33.5	37