

Push-in Fittings

WPUT SERIES



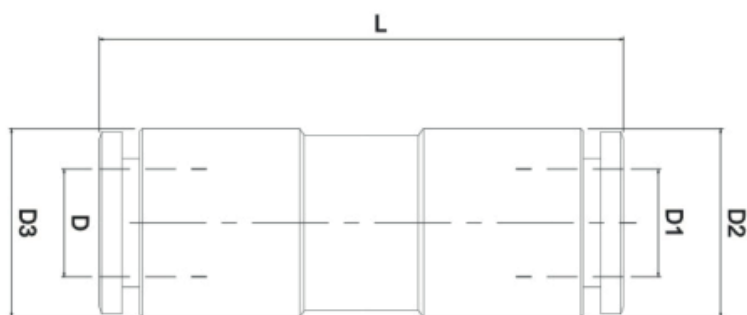
Product features

- It's made of copper pneumatic piping joints
- Not only the body but also the sleeve, both of them are made from copper, which is good for flame resistance, heat resistance and splash performance

Speciality

Operating Temperature	-20~+80°C
Operating Pressure	0-1.0MPa
Fluid	Aia, Vacuum
Applicable Tube	Polyurethane and Nylon

Dimension



MODEL	ϕD	$\phi D1$	$\phi D2$	$\phi D3$	L
WPUT 04	4	4	8.5	8.5	30.3
WPUT 06	6	6	12	12	39
WPUT 08	8	8	14	14	41.4
WPUT 10	10	10	16	16	45.3
WPUT 12	12	12	18	18	49
WPUT06-04	6	4	8.5	12	35
WPUT08-06	8	6	12	14	40.3
WPUT10-08	10	8	14	16	43.3
WPUT12-10	12	10	16	18	47