

## Push-in Fittings

### WPCFT-G SERIES



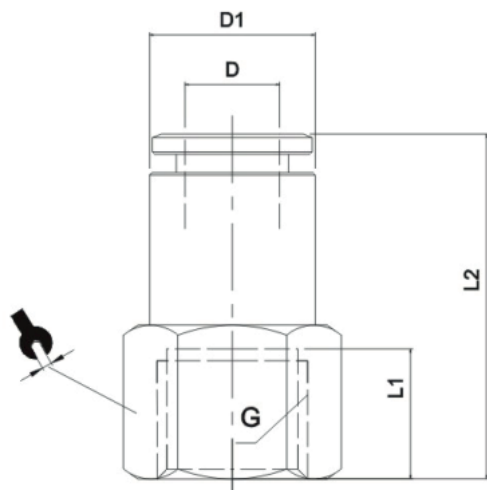
#### Product features

- It's made of copper pneumatic piping joints
- Not only the body but also the sleeve, both of them are made from copper, which is good for flame resistance, heat resistance and splash performance

#### Speciality

Operating Temperature	-20~+80°C
Operating Pressure	0-1.0MPa
Fluid	Aia, Vacuum
Applicable Tube	Polyurethane and Nylon

#### Dimension



MODEL	$\phi D$	G	L1	L2	$\phi D1$	
WPCFT04-G01	4	G1/8	8.5	23	8.5	14
WPCFT04-G02	4	G1/4	11	25.5	8.5	17
WPCFT06-G01	6	G1/8	8.5	28	12	14
WPCFT06-G02	6	G1/4	11	30.5	12	17
WPCFT06-G03	6	G3/8	12	31.5	12	21
WPCFT06-G04	6	G1/2	14	33.5	12	24
WPCFT08-G01	8	G1/8	8.5	29	14	14
WPCFT08-G02	8	G1/4	11	31.5	14	17
WPCFT08-G03	8	G3/8	12	32.5	14	21
WPCFT08-G04	8	G1/2	14	34.5	14	24
WPCFT10-G01	10	G1/8	8.5	31	16	17
WPCFT10-G02	10	G1/4	11	33.5	16	17
WPCFT10-G03	10	G3/8	12	34.5	16	21
WPCFT10-G04	10	G1/2	14	36.5	16	24
WPCFT12-G02	12	G1/4	11	35	18	19
WPCFT12-G03	12	G3/8	12	36	18	21
WPCFT12-G04	12	G1/2	14	38	18	24