

Sipariş Kodu / Ordering Code

**WMOS - TB - 065 -**

1

 Model  
Model

2

 Tahrik Birimi  
Drive Unit

3

 Boyut  
Size

4

 Strok  
Stroke

5

 İlerleme  
Lead

6

 Tahrik Yönü  
Driving Side

7

 Bağlantı Kiti Modeli  
Mounting Kit Model

8

 Bağlantı Kiti Montaj  
Mounting Kit Assembly

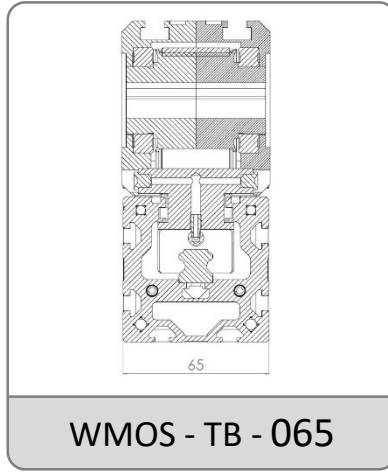
1 - Model / Model

**WMOS: Kayışlı Modül / Belt Driven Linear Module**

2 - Tahrik Birimi / Drive Unite

**TB: Triger Kayış / Timing Belt**

3 - Boyut / Size



4 - Strok / Stroke

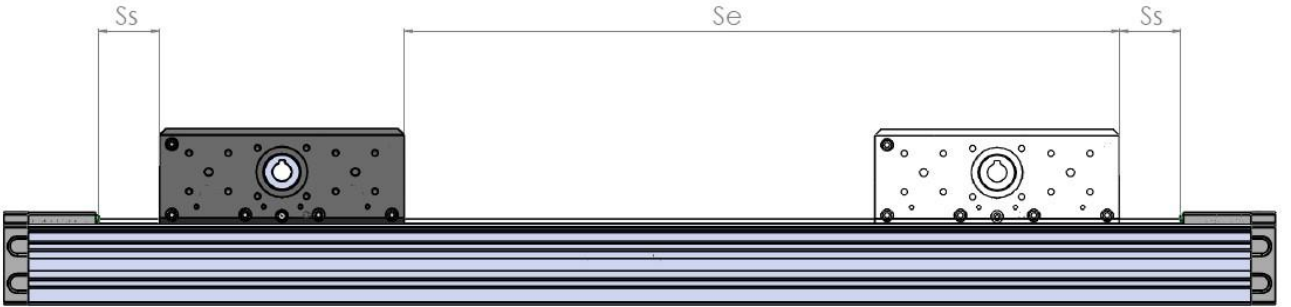
**0000: Maksimum 2685 mm / Maximum 2685 mm**
**Haraket Stroku / Movement Stroke**

İstenilen çalışma stokuna ek olarak Ss ölçüsü kadar her iki tarafta da boşluk bırakılması tavsiye edilir.  
In addition to the desired movement stroke, it is recommended to leave a space on both sides until Ss.

$$S_m = S_e + 2.S_s$$

$$S_s = 50 \text{ mm}$$

**S<sub>m</sub> : Haraket Stroku / Movement Stroke**  
**S<sub>e</sub> : Etkin Hareket Stroku / Safety Stroke**



5 - İlerleme / Lead

**140 : 140 mm/devir / 140 mm/rev**

Sipariş Kodu / Ordering Code

WMOS - TB - 065 -

1

Model  
Model

2

Tahrik Birimi  
Drive Unit

3

Boyut  
Size

4

Strok  
Stroke

5

İlerleme  
Lead

6

Tahrik Yönü  
Driving Side

7

Bağlantı Kiti Modeli  
Mounting Kit Model

8

Bağlantı Kiti Montaj  
Mounting Kit Assembly

6 - Tahrik Yönü / Ordering Code

00 - Standart / Standard



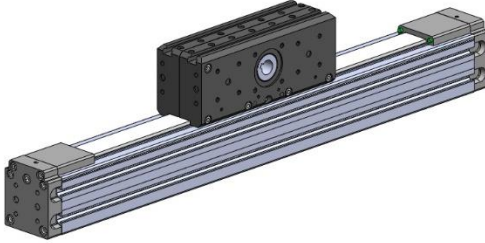
01



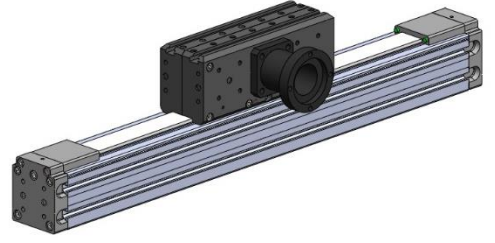
02



7 - Bağlantı Kiti Modeli / Mounting Kit Model



**00 : Bağlantı Kitsiz (STANDART)**  
Without Mounting (Standard)

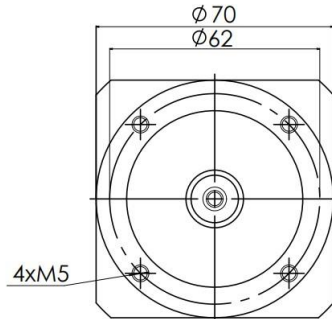


**01 : WDAK Eksenel Kit**  
Axial Kit

Not 1 : Farklı motor tipleri ve ölçüleri için irtibata geçiniz. Note 1 : Please contact for different motor types and mounting sizes.

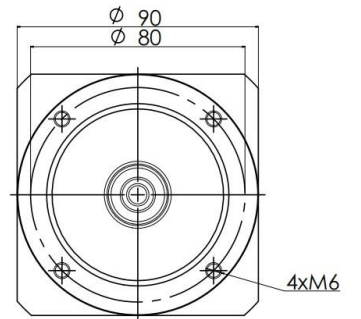
Not 2 : Redüktörlü ürünler kullanmak için irtibata geçiniz. Note 2 : Please contact for to use gearbox.

8 - Bağlantı Kiti Montaj / Mounting Kit Assembly



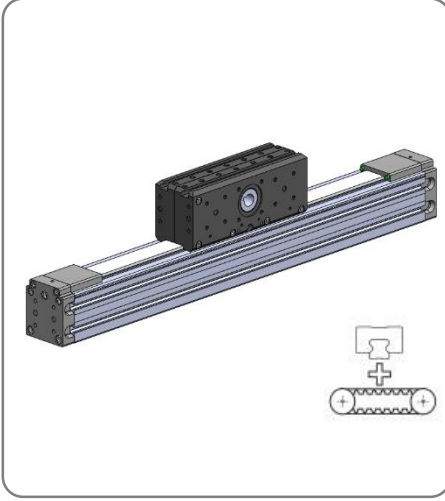
**00 : Motorsuz (Standart)**  
Without Motor (Standard)

**070 : Ø70 redüktör bağlantısı**  
Ø70 reducer mounting



**090 : Ø redüktör bağlantısı**  
Ø90 reducer mounting

## WINMAN WMOS-065 Serisi Omega Kayışlı Modüller / WMOS-065 Series Omega Belt Driven Linear Modules



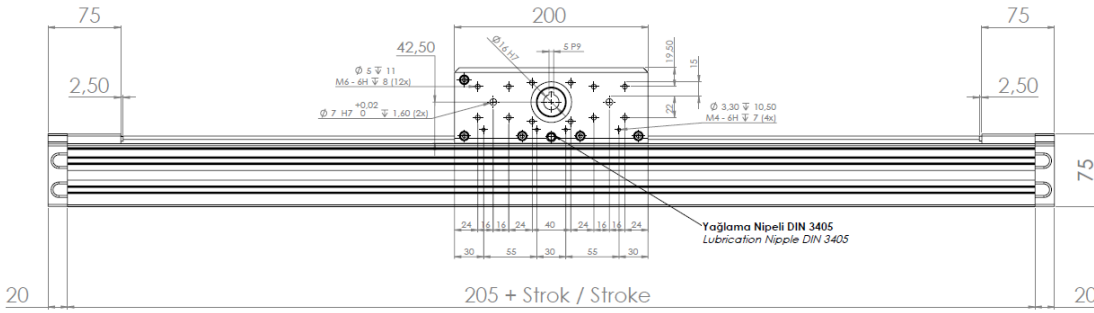
Özellikler / Specification		Sürücü Bloğundan Montaj Mounting by the Drive Block	Profilden Montaj Mounting by the Profile
Maksimum Strok / Maximum Stroke [mm]		880	2685
Minimum Strok / Minimum Stroke [mm]		60	
Tekrarlama Hassasiyeti / Repeating Accuracy [mm]		< 0,1	
Çalışma Hızı / Speed [m/s]		≤ 5,0	
İvmelenme Max / Acceleration [m/s <sup>2</sup> ]		50	
Dinamik Yük Kapasitesi / Dynamic Load Capacity [Nm]		Dinamik Moment Kapasitesi / Dynamic Torsional Moment Load Capacity [Nm]	
C		M <sub>t</sub>	M <sub>L</sub>
19258		148	1183

Eksenlerde İzin Verilen Maximum Moment / Maximum Permissible Torsional Moment Around The Axis [Nm]			Eksenlerde Maximum Dinamik Yük / Maximum Dynamic Load in Directions [Nm]	
M <sub>x</sub> max	M <sub>y</sub> max	M <sub>z</sub> max	F <sub>y</sub> max	F <sub>z</sub> max
47	372	372	6361	5709

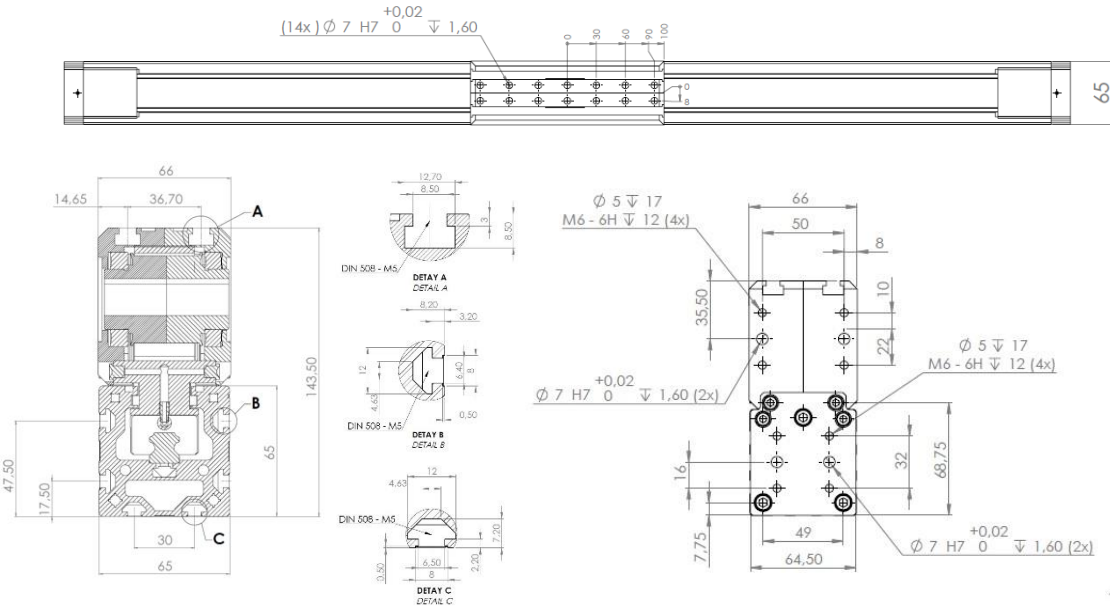
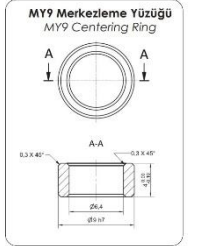
Not : Verilen değerler teorik değerlerdir. Emniyet katsayısını 5 almanızı öneririz.

Note : Calculated value are theoretical values. We recommend you to calculate safety factor as five (5).

## Teknik Çizim / Technical Drawing

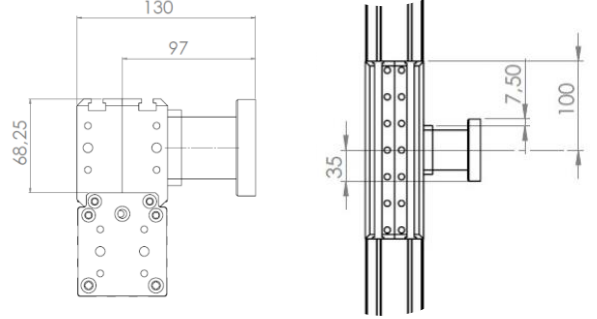
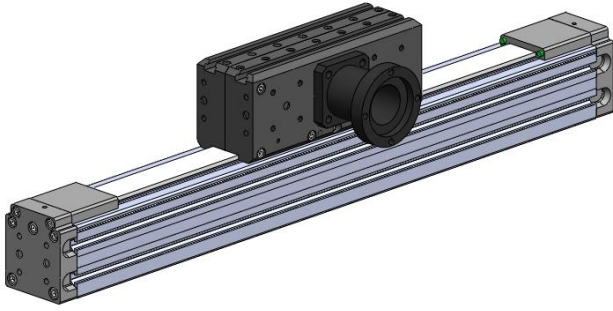


Sipariş Kodu /  
Order Code :  
**176199**



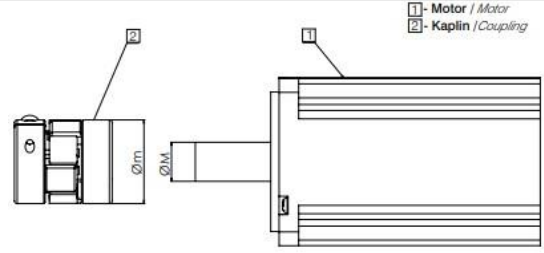
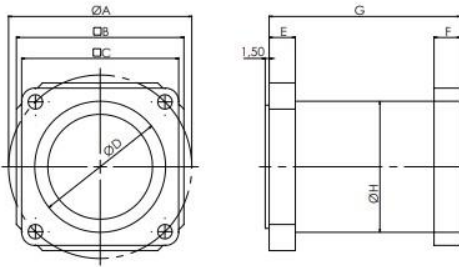
**WDAK Eksenel Bağlantı Kiti / WDAK Axial Mounting Kit**

**Teknik Çizim / Technical Drawing**



**Kampana - Kaplin / Bellhousing - Coupling**

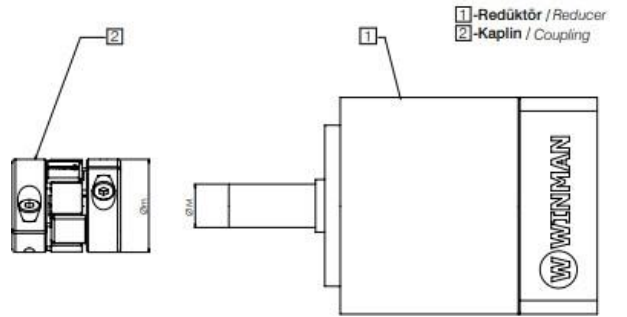
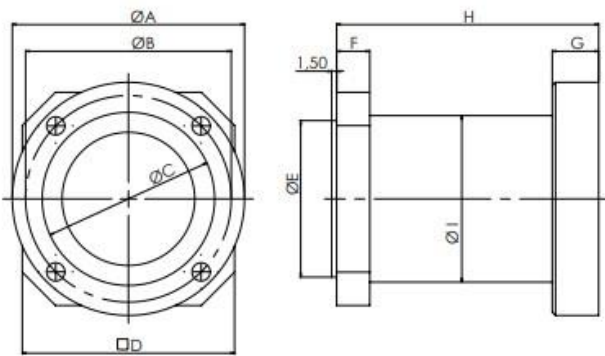
**Motor Bağlantı / Motor Mounting**



Motor Tipi Motor Type	A	B	C	D	E	F	G	H
WDAK - 070	70	64	60	50	10	10	73	50
WDAK - 090	90	64	80	70	10	10	86	51

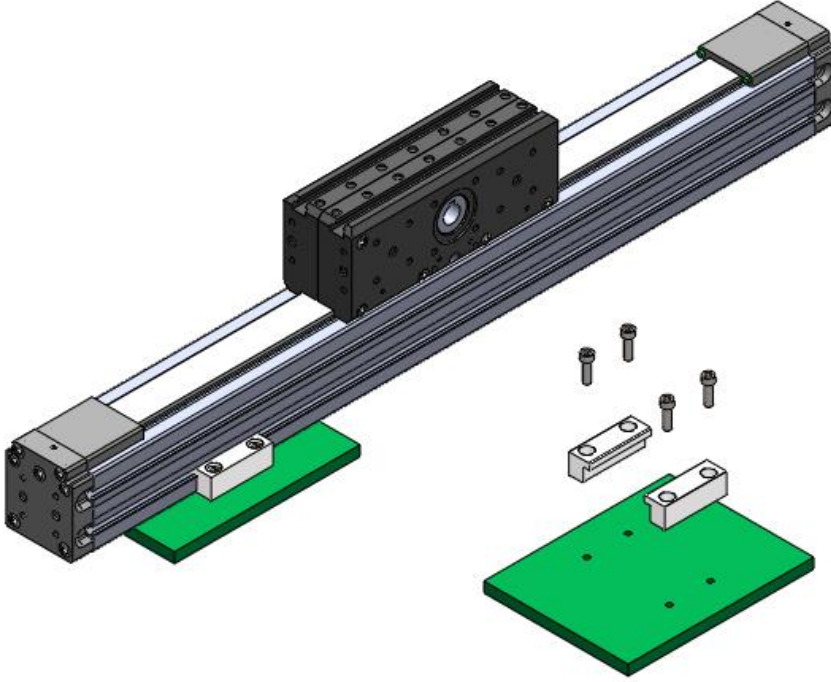
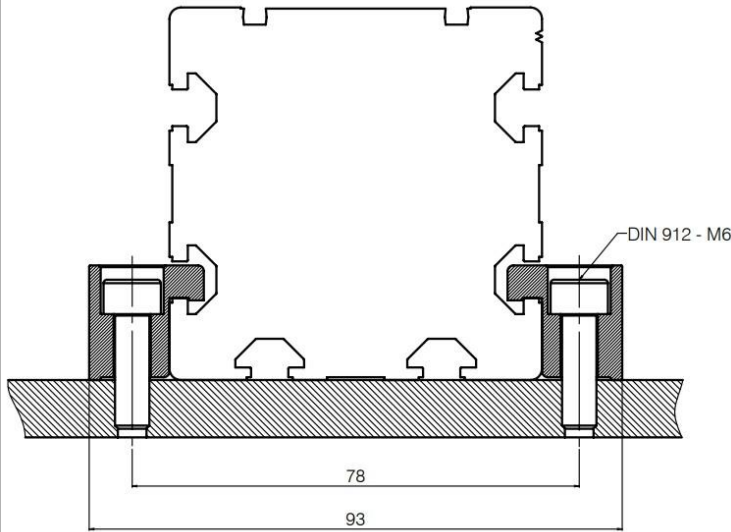
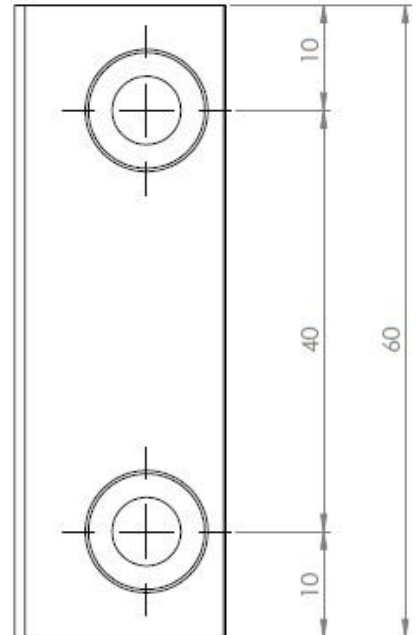
Motor Tipi Motor Type	M	m	Kaplin Modeli Coupling Model
WDAK - 070	14	30	WWJCL - 30CRD
WDAK - 090	19	40	WWJCL - 40CRD

**Redüktör Bağlantı / Reducer Mounting**

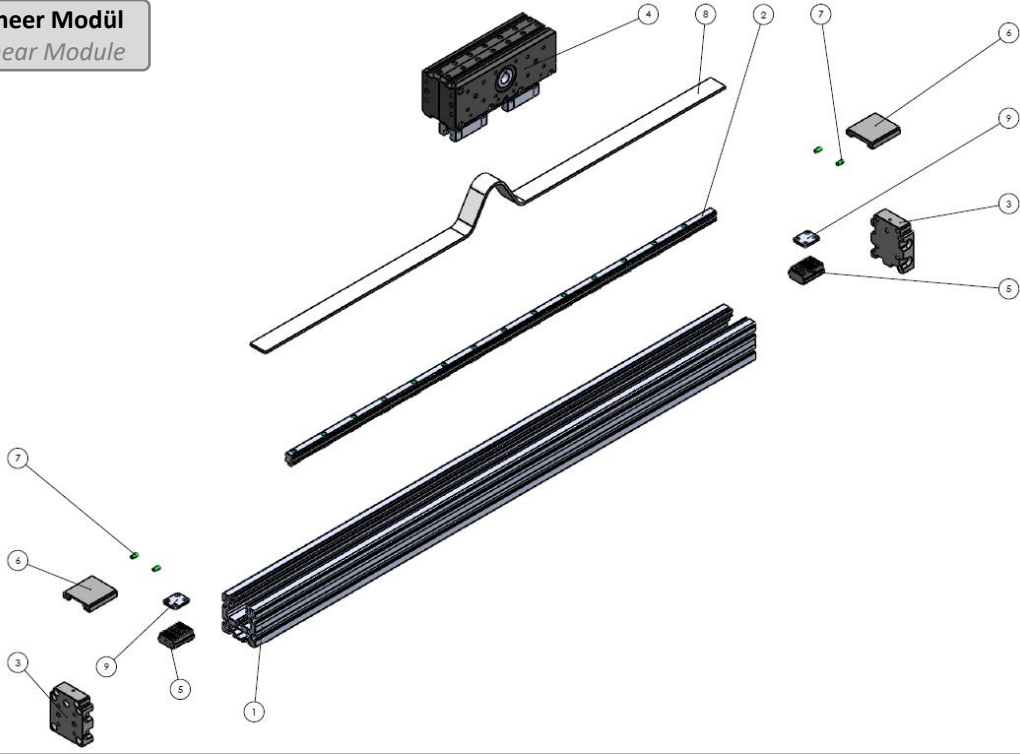
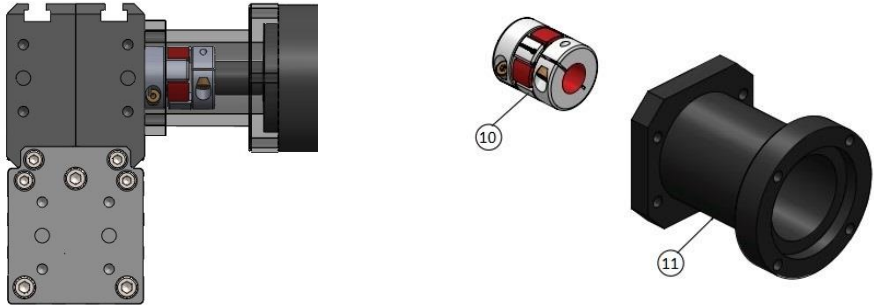


Motor Tipi Motor Type	A	B	C	D	E	F	G	H	I
WDAK - 070	70	62	52	64	47	10	14	79	50
WDAK - 090	90	80	68	64	47	10	14	92	60

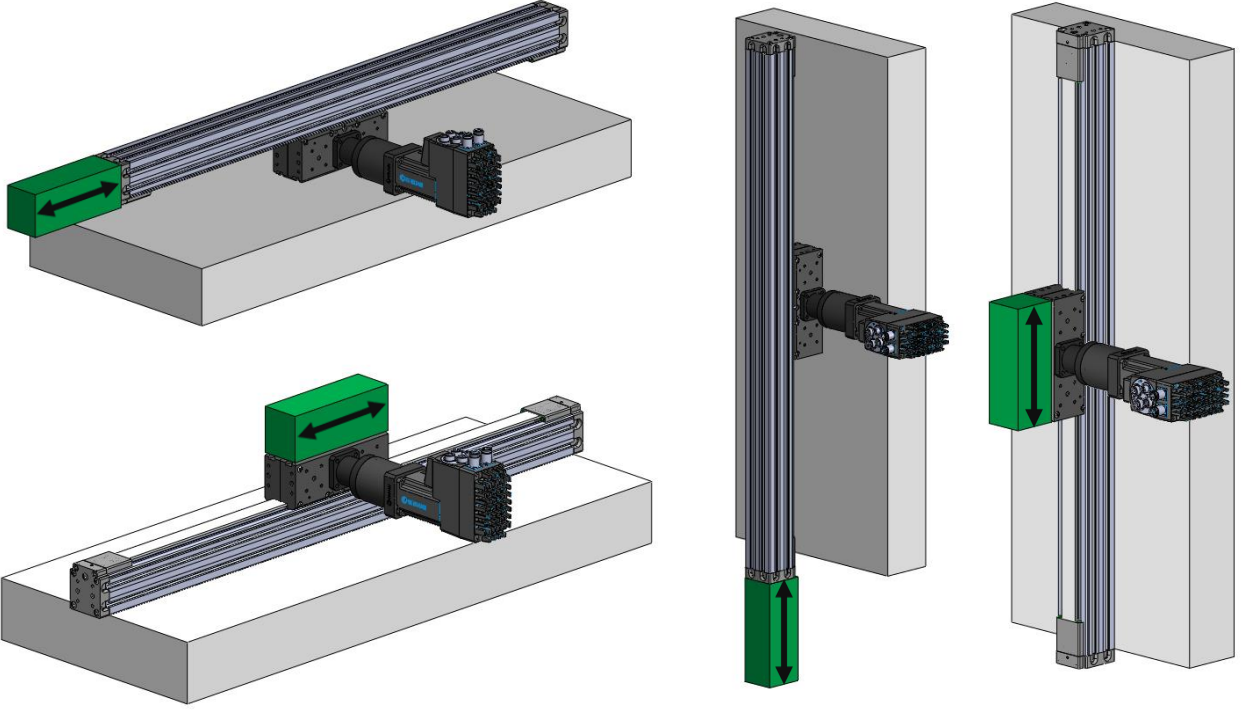
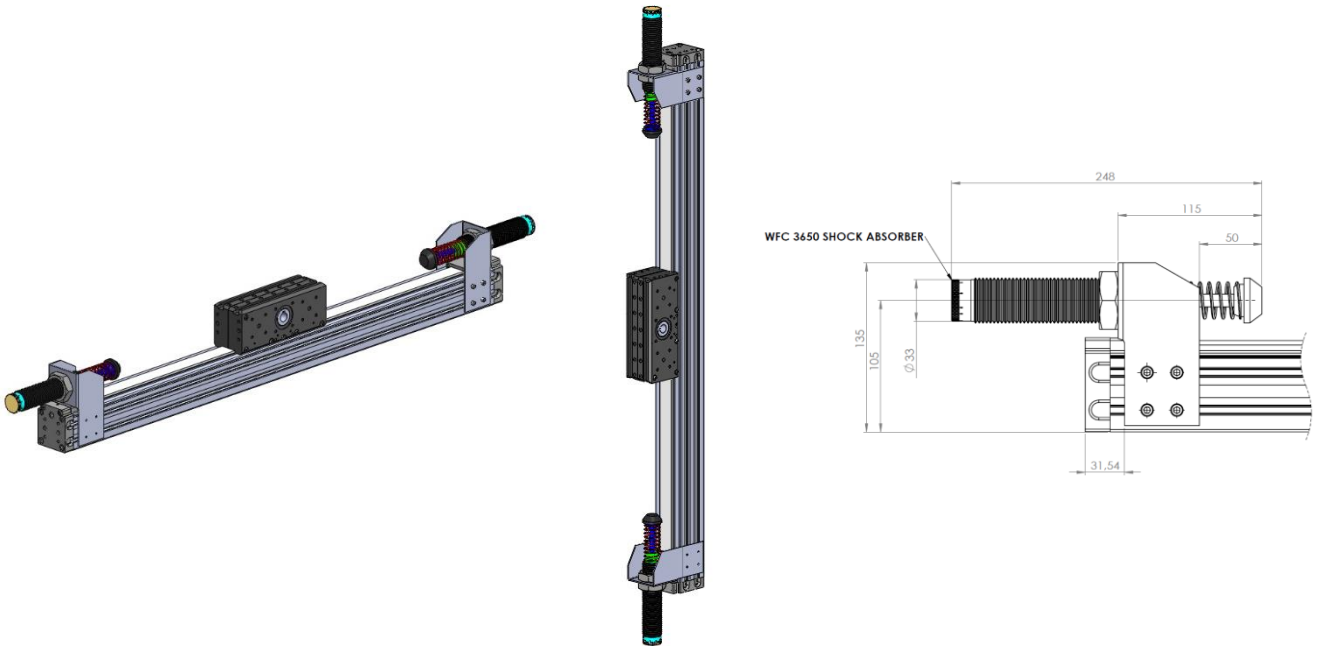
Motor Tipi Motor Type	M	m	Kaplin Modeli Coupling Model
WDAK - 070	14	30	WWJC - 30CRD
WDAK - 090	22	40	WWJC - 40CRD

**Montaj / Assembly**Sipariş Kodu / Order Code : **189360****Montaj Bağlantı Aparatı / Mounting Bracket****WMOS 065 Sabitleme Braketi**  
Clamping Fixtures

## Montaj / Assembly

**WMOS Lineer Modül**  
 WMCS Linear Module

**WDAK Eksenel Kit**  
 WDAK Axial Kit


Parça / Piece	Miktar / Qty	Parça Adı / Part Name	Montaj / Assembly
1	1	Profil / Profile	Modül Module
2	1	Lineer Ray / Ball Screw	
3	2	Kapak / Block	
4	1	Bağlantı Plakası / Mounting Plate	
5	2	Kayış Bağlantı Parçası / Belt Mounting Parts	
6	2	Kapak Parça / Block Part	
7	4	Kapak Tutucu / Block Holder	
8	1	Kayış / Belt	
9	2	Kayış Bağlantı Parçası / Belt Mounting Parts	
10	1	Kaplin / Coupling	Eksenel Kit Axial Kit
11	1	Kampana / Kampana	

**Montaj Bağlantı Eksenleri / Mounting Orientation Horizontal****Şok Emici / Shock Absorber**Sipariş Kodu / Order Code : **189362**

## Bakım / Maintenance

### - İlk yağlama montaj sırasında yapılır.

*Basic lubrication is done in-factory before shipment.*

### - Taşıyıcıdaki dişli kasnakları yataklayan rulmanlar normal çalışma koşullarında tekrardan yağlama gerektirmez.

*The bearings that support the gear pulleys on the carrier are not necessary relubricating under normal operating conditions.*

### - Omega modülün yağlaması için bağlantı plakasında yağlama nipelini için yer bulunmaktadır.

*For lubrication of the omega module, link for lubrication is in the connection plate.*

### - Omega modüller sadece uygun gres yağlar ile yağlanmalıdır.

*Omega Modules are designed for grease lubricants only!*

### - Lityum içerikli gres yağlar kullanılmalıdır.

*Lithium soap grease should be used.*

### - Dikkat: grafit ya da MoS içeren gresler tercih etmeyiniz!

*Caution: Do not use grease containing graphite or MoS!*

### - Yağlama, her 400 çalışma saatinde ya da 800km çalışma mesafesine ulaşıldığında yapılır.

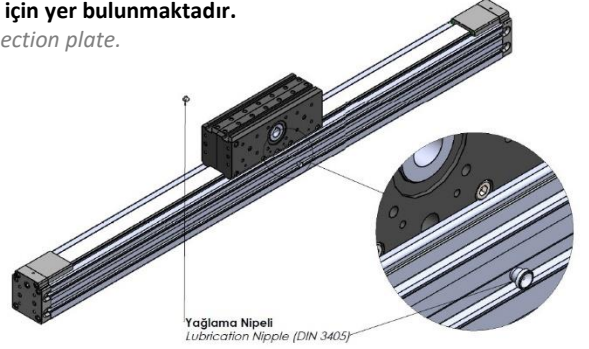
*Lubrication is performed every 400 hours or 800 km total working distance by normal operating conditions.*

### - Yağlama miktarı normal çalışma koşullarına göre tabloda verilmiştir.

*Lubrication quantity is provided in table by normal operating conditions.*

### - Yağlamadan sonra lineer modülü, strok mesafesi boyunca en az üç kez hareket ettirin. Bu esnada hareket hızı 10 mm/s değerini aşmamalıdır.

*After lubrication, move the linear module along the stroke distance at least three times. Meanwhile, the moving speed should not exceed 10 mm/s.*



## Normal Çalışma Koşulları / Normal Working Conditions

**Not :** Tabloda belirtilen yağlama miktarı normal çalışma koşulları için geçerlidir. Farklı çalışma koşullarında yağlama miktarı değişkenlik gösterebilir. Farklı çalışma şartlarında ki yağlama miktarı için bilgi alınız.

*Note :* The lubrication quantity specified in the table is valid for normal operating conditions. The lubrication quantity may vary in different operating conditions. Get information for the lubrication quantity in different working conditions.

Ortam Sıcaklığı / Ambient Temperature	°C	10 ~ 40
Çalışma Hızı / Speed	m/s	≤ 3,0
Yük / Load	kN	≤ 0,2 C
Strok / Stroke	mm	> 60
Yağlama Periyodu / Lubrication Period	km	800
	hour	400
Yağlama Miktarı / Lubrication Dose	cm <sup>3</sup>	0,7

Bu katalogta yayınlanan resim, ölçü ve diğer değerleri firmamız değiştirme hakkına sahiptir.

*Our company has the right to modify change images, dimensions and other datas which take place in this catalogue.*