

## VSM302

### Features and Strengths

- Efficient individual and independent point-of-use vacuum
- Highly operational reliability despite fluctuating or low compressed-air pressure
- Extremely quick response
- Available for multiple connection ports



### Specifications

Description	VSM302
Max. Vacuum level	-93 kPa
Open Vacuum flow	NI/min
Max. Feed pressure	7 bar
Temperature	-20 ~ 80 °C
Noise level	50 ~ 60 dBA

### Vacuum Flow

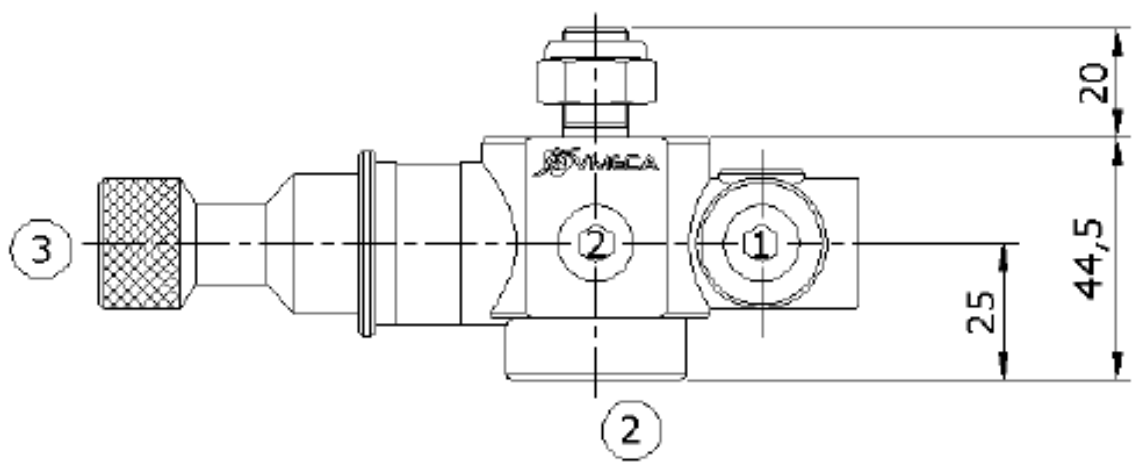
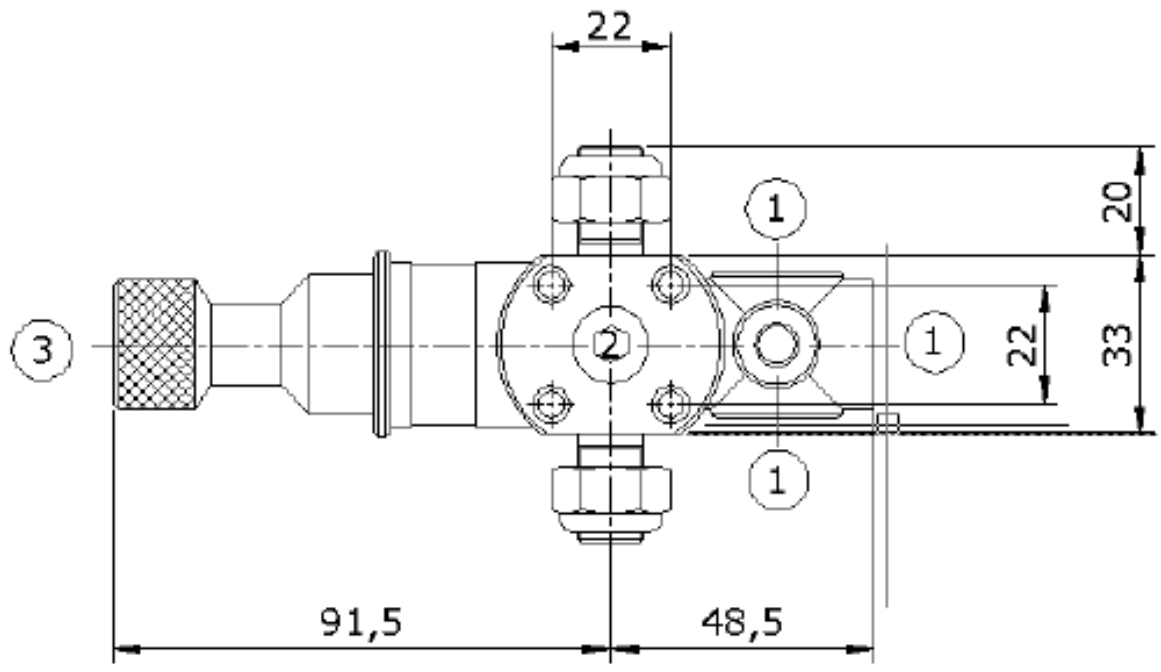
Model	Max. vacuum (-kPa)	Feed Pressure (bar)	Vacuum flow (NI/min) at different vacuum levels (-kPa)									
			0	10	20	30	40	50	60	70	80	90
VSM302	75	2.2	164	122.5	88	53	31.4	28.5	16.5	4.6	-	-
	93	3	170	152	106	64	33	32	22	16.5	6.4	1.9
	93	4	171	154	127.5	94	69	43	23.3	17.3	6.9	2.1

### Evacuation Time

Model	Feed Pressure (bar)	Air Consumption (NI/min)	Evacuation time in sec / liter to reach different vacuum levels (-kPa)								
			10	20	30	40	50	60	70	80	90
VSM302	2.2	97	0.03	0.12	0.21	0.38	0.47	0.73	1.62	-	-
	3	118	0.027	0.1	0.19	0.3	0.4	0.64	0.8	1.2	3.8
	4	152	0.026	0.058	0.09	0.1	0.25	0.5	0.69	1.05	3.5

[ Unit : mm ]

Dimensions



[ Unit : mm ]

## VSM303

### Features and Strengths

- Efficient individual and independent point-of-use vacuum
- Highly operational reliability despite fluctuating or low compressed-air pressure
- Extremely quick response
- Available for multiple connection ports



### Specifications

Description	VSM303
Max. Vacuum level	-93 kPa
Open Vacuum flow	341 NI/min
Max. Feed pressure	7 bar
Temperature	-20 ~ 80 °C
Noise level	50 ~ 60 dBA

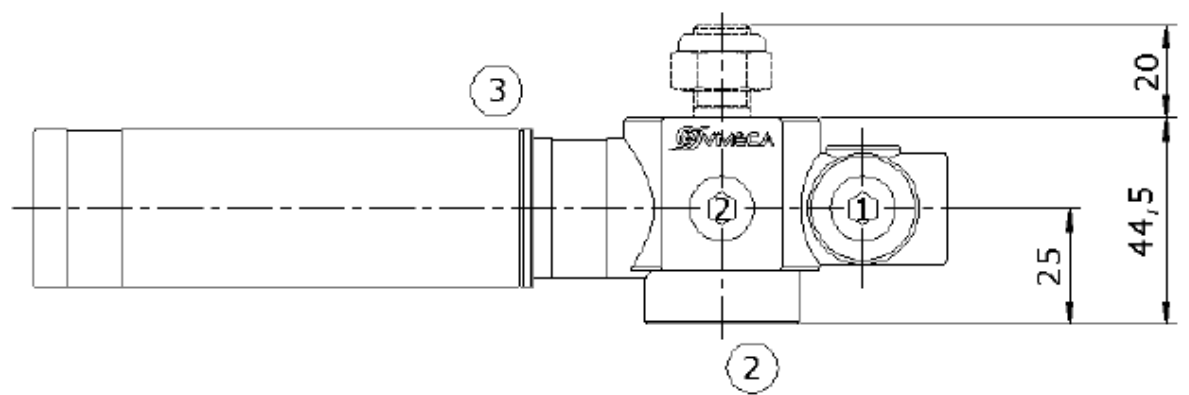
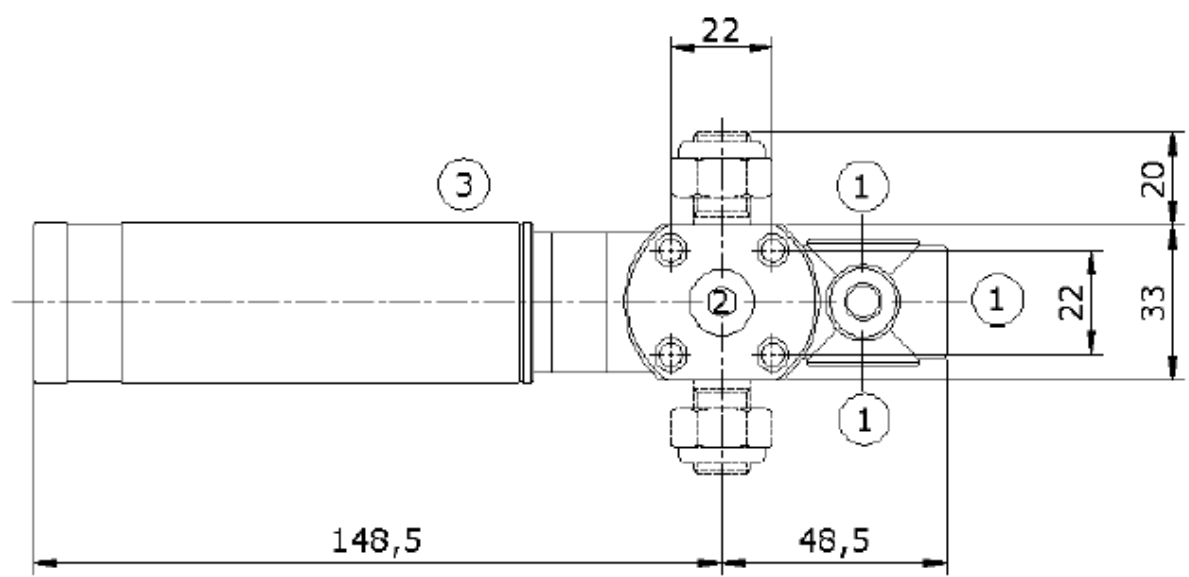
### Vacuum Flow

Model	Max. vacuum (-kPa)	Feed Pressure (bar)	Vacuum flow (NI/min) at different vacuum levels (-kPa)									
			0	10	20	30	40	50	60	70	80	90
VSM303	75	2.2	302	122.5	88	53	31.4	28.5	16.5	4.6	-	-
	93	3	338	152	106	64	33	32	22	16.5	6.4	1.9
	93	4	341	154	127.5	94	69	43	23.3	17.3	6.9	2.1

### Evacuation Time

Model	Feed Pressure (bar)	Air Consumption (NI/min)	Evacuation time in sec / liter to reach different vacuum levels (-kPa)								
			10	20	30	40	50	60	70	80	90
VSM303	2.2	97	0.019	0.09	0.1	0.32	0.42	0.73	1.62	-	-
	3	118	0.015	0.07	0.18	0.28	0.38	0.64	0.8	1.2	3.8
	4	152	0.01	0.048	0.07	0.09	0.2	0.42	0.6	1	3.4

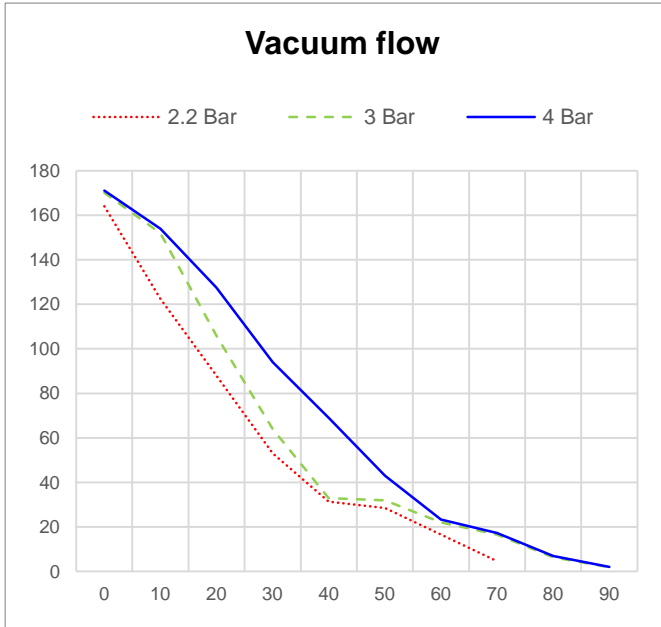
## Dimensions



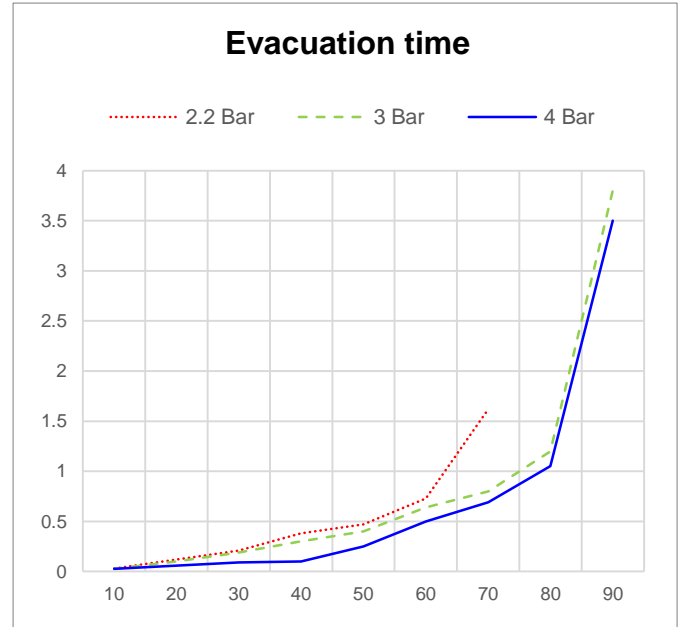
[ Unit : mm ]

## Performance data

### VSM302

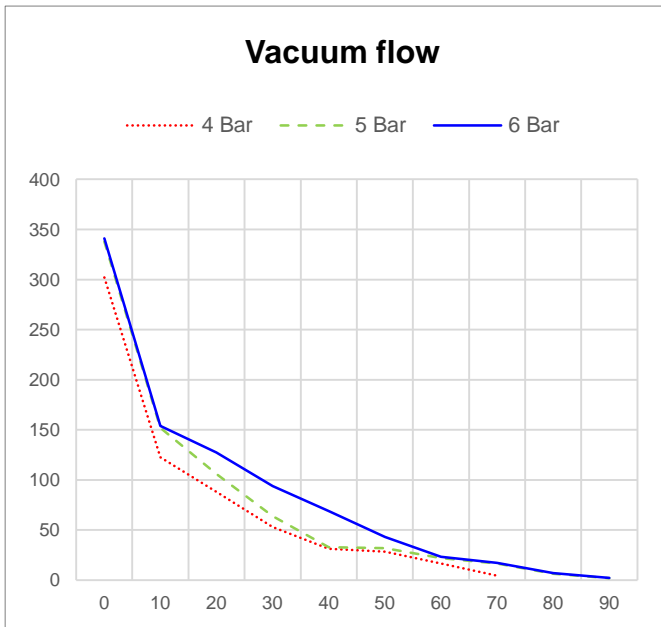


※ Vacuum flow at different vacuum level

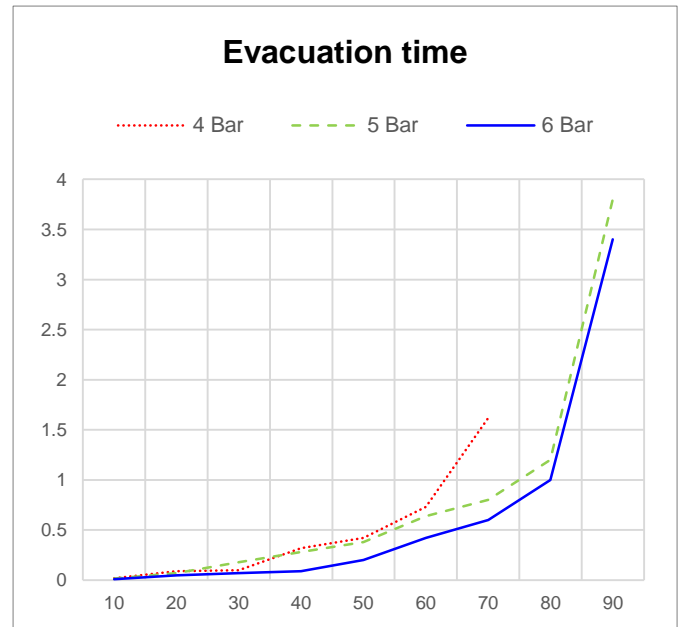


※ Time to evacuate a volume at different vacuum level

### VSM303

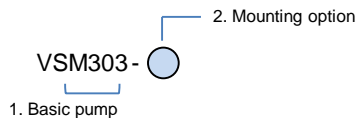


※ Vacuum flow at different vacuum level



※ Time to evacuate a volume at different vacuum level

## Build an Ordering No.



1. Basic pump	Description	Ordering No.
	VSM pump, 2-stage cartridge, Plug	VSM302P
	VSM pump, 2-stage cartridge, Plug, Non-return valve	VSM302N
	VSM pump, 3-stage cartridge, Two-fold silencer	VSM303S
	VSM pump, 3-stage cartridge, Two-fold silencer, Non-return valve	VSM303N
	VSM pump, No vacuum cartridge for slave unit	VSM030

2. Mounting option	Description	Ordering No.
	4x screw M6 top, 6x plug G1/4"(direct mount)	F
	M12 20mm screw top, 6x plug G1/4"	MT12
	M12 20mm screw left, 6x plug G1/4"	ML12
	M12 20mm screw right, 6x plug G1/4"	MR12
	M12 20mm screw top, 6x plug G1/4, Mounting bracket	BT12

## Spare Parts – Basic pumps

Model	Description
VSM302P	VSM pump, 2-stage cartridge, Plug
VSM302N	VSM pump, 2-stage cartridge, Plug, Non-return valve
VSM303S	VSM pump, 3-stage cartridge, Two-fold silencer
VSM303N	VSM pump, 3-stage cartridge, Plug, Non-return valve
VSM030	VSM pump, 3-stage cartridge, Two-fold silencer, Non-return valve

## Spare Parts – Cartridges

Model	Description	Available model
VC302	Midi vacuum cartridge, 2-Stage	VSM302P
VC302-N	Midi vacuum cartridge, 2-Stage, Non-return valve	VSM302N
VC303	Midi vacuum cartridge, 2-Stage	VSM303S
VC303-N	Midi vacuum cartridge, 3-Stage, Non-return valve	VSM303N

## Spare Parts – Mounting

Code	Description
	4x screw M6 top, 6x plug G1/4"(direct mount)
	M12 20mm screw top, 6x plug G1/4"
	M12 20mm screw left, 6x plug G1/4"
	M12 20mm screw right, 6x plug G1/4"
	M12 20mm screw top, 6x plug G1/4, Mounting bracket

## Spare Parts – Plug & Silencer

Model	Description
	Holding plug for VSM302P and VSM302N
	Two-Fold Silencer for VSM303S