

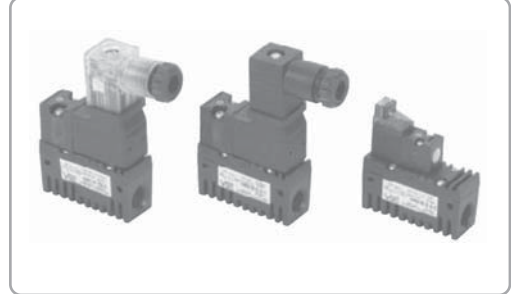
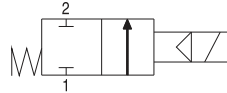
VMS18 Kontrol Valfi / VMS18 Control Valves

Özellik / Features

2/2 içten pilotlu, yay dönüşlü 1/8" selenoid valf
Bu valf kompakttır ve yüksek debileri kontrol edebilir.

2/2 way solenoid valve G1/8" (for air control) indirectly operated with spring return.

This valve are compact and can control high flow rate of air.



Sipariş No / Order No

VMS18D - 3 - 3

① ② ③

② Voltaj / Voltage

- 1 - AC110V
- 2 - AC220V
- 3 - DC24V

③ Selenoid Terminal / Solenoid Terminal

- 1 - **DIN tipi kablolu** / DIN type without lead wire
- 2 - **DIN tipi kablolu LED'li** / DIN type with lamp without lead wire
- 3 - **Soket tipi 0.3m kablolu ve LED'li: DC24V**

Connector type with 0.3m lead wire & lamp: DC24V

*Dikkat: Soket tipli valf sadece DC24V' dir.
 Remark: Connector type control valve DC24V Only.

① Model

- VMS18D **Diyafram Valf** (Diaphragm Valve)
- VMS18 **Piston Valf** (Piston Valve)

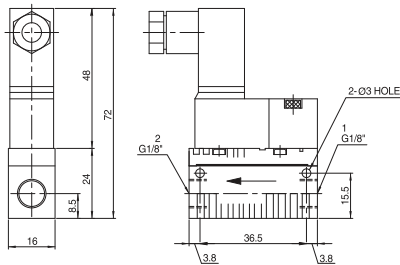
Çalışma Özellikleri / Operating Specifications

Özellikleri / Specification	Model / Model	VMS 18D	VMS 18
Bağlantı / Connection		G1/8"	
Normal Debi / Normal Flow		516 Nl/min	1230 Nl/min
Basınç Aralığı / Pressure Range		2.5 ~ 7bar	
Sıcaklık Aralığı / Temperature Range (°C)		0°C ~ + 60°C	-18°C ~ + 65°C
Malzemeler / Materials		Ni, Al, SS, POM, CuZn, NBR, PA66, PUR, PPS	Ni, Al, SS, POM, CuZn, NBR, PPS
Standart Voltajlar / Standard Voltages		DC: 24V AC: 110V, 220V - 50/60Hz	
Güç Tüketimi / Power Consumption		0.6W, 1.3W	
Ağırlık / Weight (g)		20g	60g

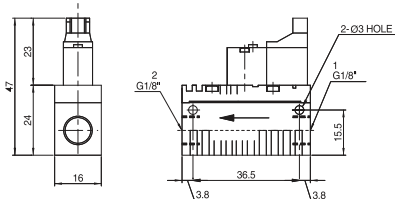
Ölçüsel Bilgiler / Dimensional Information

VMS 18D

DIN Tipi / DIN Type

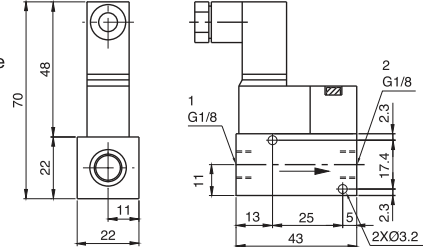


Soket Tipi
Connector Type



VMS 18

DIN Tipi / DIN Type



Soket Tipi
Connector Type

