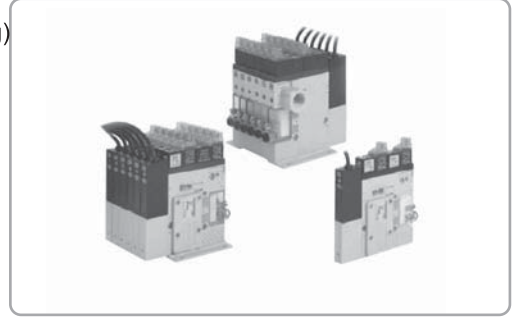


Mini Vakum Adası / Mini Keyboard Pump

Max. Vakum Seviyesi /	: VKX pompa / pump -92kpa (-690mmHg)
Max. Vacuum Level	VKM pompa / pump -85kpa (-637.5mmHg)
Max. Vakum Debisi /	: VKX pompa / pump 23 NI/dak - NI/m
Max. Flow Rate	VKM pompa / pump 26 NI/dak - NI/m
Basınçlı Hava Kaynağı /	: 3-6 bar, Max, 7 bar
Supply Air Pressure	
Kaynak Hava Tipi /	: Kuru basınçlı hava / Dry compressed air
Supply Air Type	
Çalışma sıcaklığı /	: -20°C ~ +80°C
Working Temperature	
Gürültü Seviyesi /	: 50 - 65 dBA
Noise Level	



Ana Avantajları / Main Advantages

- Yüksek verimliğe sahip mini vakum pompası (çoklu oda tipi)
- Aynı ayrı kontrol edilebilir.
- Uzun çalışma ömrü ve düşük gürültü seviyesi
- Bağlantısı kolay ve kompakt ölçülü (10mm)
- Hafif
- Dahili çek valf
- Gövdesinde; vakum pompası, basınçlı hava ve bırakırma kontrol valfi, vakum anahtarı, filtre, akış kontrol valfi ve susturucu montajlıdır.
- High efficiency Mini vacuum pump (Multi-Nozzle type).
- Available of individual control.
- Long life time and Low noise level.
- Easy to install and Compact size (10mm).
- Lightweight.
- Built-in check valve.
- Integrated Vacuum Pump, Air supply & Vacuum release control valve, Vacuum Switch, & Filter Blowing flow control valve and silencer in a body.

Sipariş No / Order No

VKM5 - M 6 - A 4 N V

① ② ③ ④ ⑤ ⑥ ⑦

① Model-Vakum Debisi / Model-Vacuum Flow

VKX5 - 23 NI/dak-NI/m
VKM5 - 26 NI/dak-NI/m

② Gövde Tipi / Body Type

S - Tekli / Single Unit
M - Manifold / Manifold Unit
E - Manifold ve merkezi egzoz
Manifold unit with central exhaust unit

④ Valfler / Valves

	Hava Kaynağı Kontrol Valfi / Air Supply Control Valve	Vakum Bıraktırma Valfi / Vacuum Release Control Valve	Vakum Anahtarı / Vacuum Switch
A	⊙ N.C. : Normalde Kapalı / Normal Closed	⊙ N.C. : Normalde Kapalı / Normal Closed	⊙
B	⊙ N.O. : Normalde Açık / Normal Open	⊙ N.C. : Normalde Kapalı / Normal Closed	⊙
C	⊙ N.C. : Normalde Kapalı / Normal Closed	⊙ N.C. : Normalde Kapalı / Normal Closed	
D	⊙ N.O. : Normalde Açık / Normal Open	⊙ N.C. : Normalde Kapalı / Normal Closed	
E	⊙ N.C. : Normalde Kapalı / Normal Closed		⊙
F	⊙ N.O. : Normalde Açık / Normal Open		⊙
G	⊙ N.C. : Normalde Kapalı / Normal Closed		
H	⊙ N.O. : Normalde Açık / Normal Open		⊙
I		⊙ N.C. : Normalde Kapalı / Normal Closed	⊙
J			
K		⊙ N.C. : Normalde Kapalı / Normal Closed	

İşaretleme / Remark : A...(P)

➔ Çıkış Tipi: PNP açık kollektör
Output type : PNP open collector

Sadece DC24V vardır.
Only DC24V is available for valve

Soket, 0,3m kablolu ve ışıklıdır.
Connector type with 0.3m lead wire & lamp

③ Vakum Dilimleri / Vacuum Stack

1-1 Dilim / Stack **6-6 Dilim / Stack**
2-2 Dilim / Stack **7-7 Dilim / Stack**
3-3 Dilim / Stack **8-8 Dilim / Stack**
4-4 Dilim / Stack **9-9 Dilim / Stack**
5-5 Dilim / Stack **10-10 Dilim / Stack**

⑤ Vakum Bağlantısı / Vacuum Port

4 - Ø4 (0.D : standard)
6 - Ø6 (0.D)

⑥ Dönmez Valf / Non Return Valve

İşaretsiz / No Mark - Standart / Standard
N - Dönmez valfi / Non return valve

⑦ Sızdırmazlık / Sealing

İşaretsiz / No Mark - Standart / Standard (NBR)
V - Viton / Viton
E - EPDM / EPDM

Mini Vakum Adası / Mini Keyboard Pump

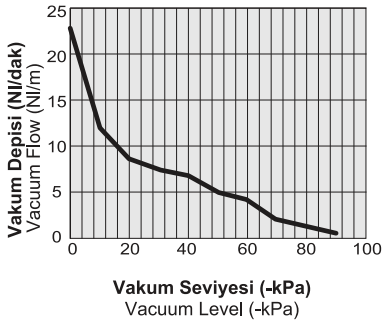
Karakteristikler / Characteristics

Model / Model	Max. Vakum Max. Vacuum -kPa(-mmHg)	Max. Vakum Debisi (NI/dak) Max. Vacuum Flow (NI/m) her dilim / eachstack	Hava Tüketimi (NI/dak) Air Consumption (NI/m) her dilim / eachstack	Ses Seviyesi Noise Level (dBA)	Ağırlık Weight(g) her dilim / eachstack
VKX5	92 (690)	23	13 ~22	50 ~ 65	96
VKM5	85 (637.5)	26	12 ~21	50 ~ 65	96

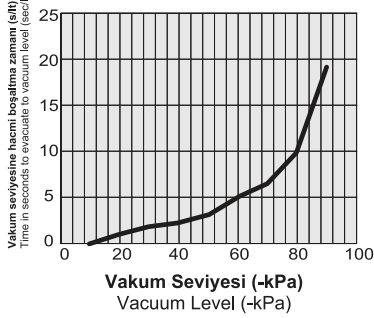
İşaret: Manifolt tipi ağırlığı = 86g x N + 22g (N: dilim) / Remark : Manifold unit type weight = 86g X N + 22g (N: stack)

VKX5

Üretilen Vakum (NI / dak)
Induce air in liters per minute (NI/min)

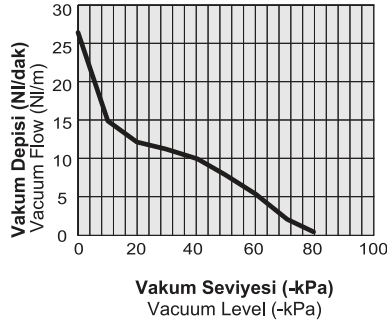


Vakum seviyesine hacmi boşaltma zamanı (s/lt)
Time in seconds to evacuate to vacuum level (sec/l)

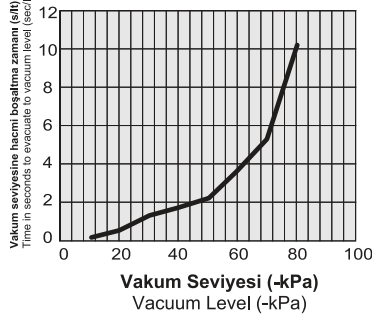


VKM5

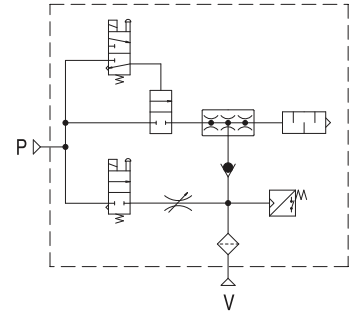
Üretilen Vakum (NI / dak)
Induce air in liters per minute (NI/min)



Vakum seviyesine hacmi boşaltma zamanı (s/lt)
Time in seconds to evacuate to vacuum level (sec/l)

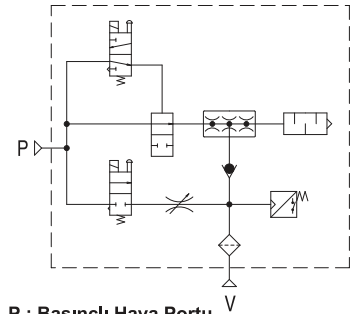


N.K. Tip
N.C. Type



P : Basıncı Hava Portu
Compressed Air Supply Port
V : Vakum Portu / Vacuum Port

N.A. Tip
N.O. Type



P : Basıncı Hava Portu
Compressed Air Supply Port
V : Vakum Portu / Vacuum Port

Üretilen Vakum (NI/dak) / Induce Air in Liters Per Minute (NI/m)

Model	-mmHg -Kpa	0	75	150	225	300	375	450	525	600	675
		0	10	20	30	40	50	60	70	80	90
VKX5		23	12	8	7	6	5	4	2.7	1.2	0.45
VKM5		26	15	12	11	10	8	5.5	2.8	0.7	

Vakum Seviyesine Ulaşma Zamanı (s/lt) / Time in Seconds to Evacuate to Vacuum Level (sec/l)

Model	-mmHg -Kpa	75	150	225	300	375	450	525	600	675
		10	20	30	40	50	60	70	80	90
VKX5		0.26	0.80	1.52	2.4	3.38	4.91	6.89	10.16	19
VKM5		0.22	0.56	1.18	1.58	2.36	3.44	5.27	10.22	