



hidtek

Hidtek 1987 yılında ülkemizin önemli endüstri şehirlerinden olan Bursa'da faaliyetine başladı.

Başlangıçta hidrolik, pnömatik malzeme satışı ve taahhüt işleri yapan firmamız, ilerleyen zamanda hızla gelişerek ithalat ve ihracat ile birlikte otomasyon ekipmanları ve pnömatik silindirin imalatını da faaliyet alanlarına dahil etti.

Markalaşma, pazarlama ve satış ağını geliştirme konularına da önem vererek WINMAN ve FREEWAY markalarını oluşturdu. Buna paralel olarak, yurtiçinde ve yurtdışında her geçen gün satış ağını genişletmeye devam etti.

Üretim konusunda kurduğu Ar-ge merkezi ile geleceğe ve sürekli gelişen teknolojiye bugüne kadar olduğu gibi bundan sonrada ayak uydurmak kararlılığındadır.

Üretim ve satışı yapılan malzemelerin genel kullanım alanları şunlardır:

- Otomotiv sanayi
- Makina sanayi
- Ambalaj makineleri
- PVC işleme makineleri
- Kaldırma makineleri (asansör, lift)
- Sac işleme makineleri
- Hidrolik presler
- İş makineleri
- Tarım makineleri
- Özel amaçlı makina ve aparatlar

Firmamız, katalogta yayınlanan resim, ölçü ve diğer değerleri değiştirme hakkına sahiptir.

Hidtek started its operations in 1987 in Bursa which is one of the most important industrial cities of our country.

At the beginning, our company was engaged in hydraulic, pneumatic material sales and contract works. Later on, it has been developed rapidly, so included production of automation equipment and pneumatic cylinders right along with import and export.

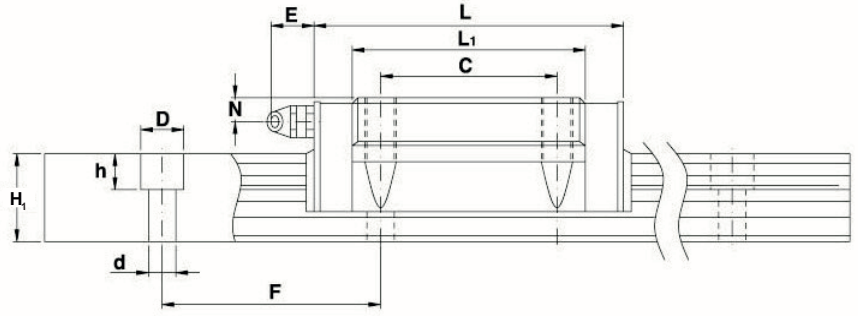
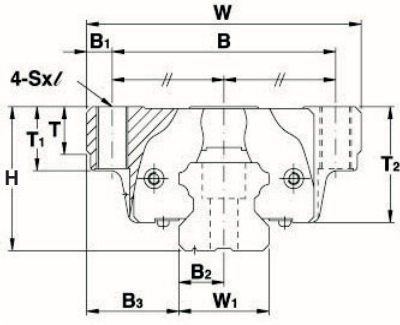
WINMAN and FREEWAY brands are created besides attaching importance to branding, marketing and enhancing sales network. Concordantly, Hidtek has extended its domestic and foreign sales network day by day.

Hidtek is determined to keep up with the future and ever-growing technology as it always has been by means of the R&D center established on production.

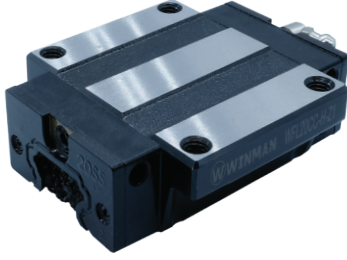
General usage areas of the production and sales materials are:

- Automotive industry
- Machine industry
- Packaging machines
- PVC profile processing machines
- Hoisting machinery (elevator, lift)
- Sheet metal working machines
- Hydraulic presses
- Heavy construction equipment
- Agricultural machines
- Custom-made machines and equipment

Our company reserves the right to modify photos, measurements and other values that were published in the catalog.



WINMAN Geniş - Geniş Uzun



Model	Genişlik (W)	Uzunluk (L)	Yükseklik (H)	Delik Merkezleri	
				B	C
WFL 15 CC	47	56.2	24	38	30
WFL 20 CC	63	76.5	30	53	40
WFL 20 HC	63	92.5	30	53	40
WFL 25 CC	70	84	36	57	45
WFL 25 HC	70	103	36	57	45
WFL 30 CC	90	100.5	42	72	52
WFL 30 HC	90	122.5	42	72	52
WFL 35 CC	100	100.5	48	82	62
WFL 45 CC	120	128.2	60	100	80

WINMAN Geniş - Geniş Kısa



Model	Genişlik (W)	Uzunluk (L)	Yükseklik (H)	Delik Merkezleri	
				B	C
WFR 15 TC	52	56.2	24	41	26
WFR 15 SC	52	36.3	24	41	-
WFR 20 TC	59	67.2	28	49	32
WFR 20 SC	59	47.5	28	49	-

WINMAN Dar - Dar Uzun

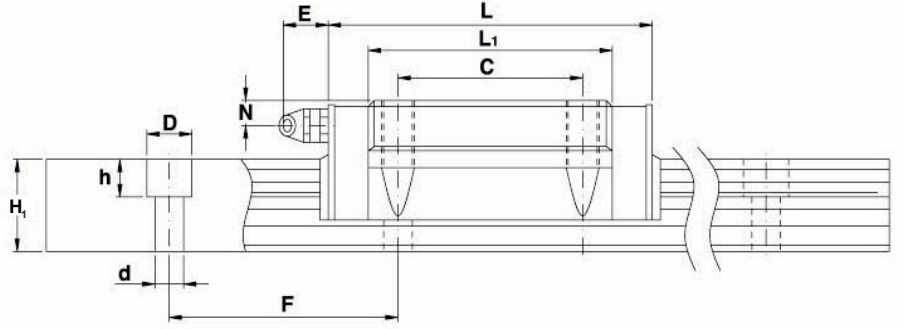
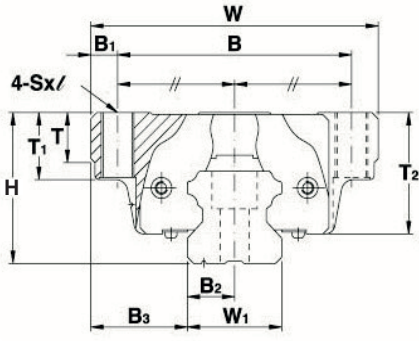


Model	Genişlik (W)	Uzunluk (L)	Yükseklik (H)	Delik Merkezleri	
				B	C
WGL 15 CA	34	56.2	28	26	26
WGL 20 CA	44	76.5	30	32	36
WGL 20 HA	44	92.5	30	32	50
WGL 25 CA	48	84	40	35	35
WGL 25 HA	48	103	40	35	50
WGL 30 CA	60	100.5	45	40	40
WGL 30 HA	60	122.5	45	40	60

WINMAN Dar - Dar Kısa



Model	Genişlik (W)	Uzunluk (L)	Yükseklik (H)	Delik Merkezleri	
				B	C
WGR 15 TA	34	56.2	24	26	26
WGR 15 SA	34	39.5	24	26	-
WGR 20 TA	42	67.2	28	32	32
WGR 20 SA	42	47.5	28	32	-
WGR 30 TA	48	79.5	33	35	35
WGR 30 SA	48	55.0	33	35	-



WINMAN Minyatür Seriler

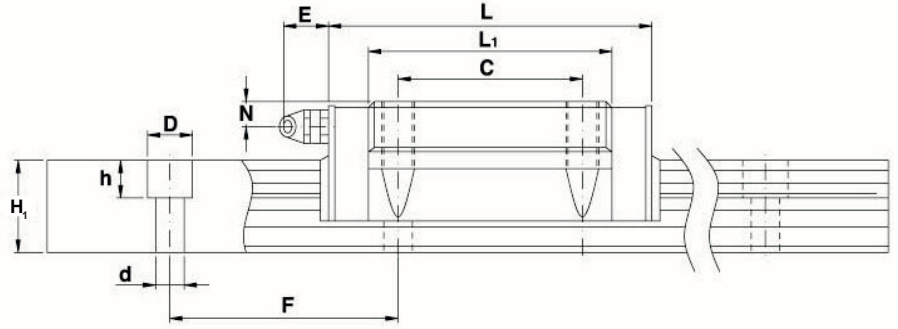
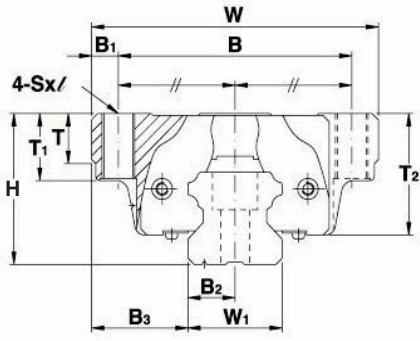
Model	Genişlik (W)	Uzunluk (L)	Yükseklik (H)	Delik Merkezleri	
				B	C
MGN 7 C	17	22.5	8	12	8
MGN 7 H	17	30.8	8	15	10
MGN 9 C	20	28.9	10	15	10
MGN 9 H	20	39.9	10	15	16
MGN 12 C	27	34.7	13	20	15
MGN 12 H	27	45.4	13	20	20
MGN 15 C	32	42.1	16	25	25
MGN 15 H	32	58.8	16	12	8



WINMAN Minyatür Geniş Seriler

Model	Genişlik (W)	Uzunluk (L)	Yükseklik (H)	Delik Merkezleri	
				B	C
MGW 7 C	25	31.2	9	10	10
MGW 7 H	25	41	9	10	19
MGW 9 C	30	39.3	12	21	12
MGW 9 H	30	50.7	12	23	24
MGW 12 C	40	46.1	14	28	28
MGW 12 H	40	60.4	14	28	28
MGW 15 C	60	54.8	16	45	20
MGW 15 H	60	73.8	16	45	35





HERMANN Geniş - Geniş Uzun

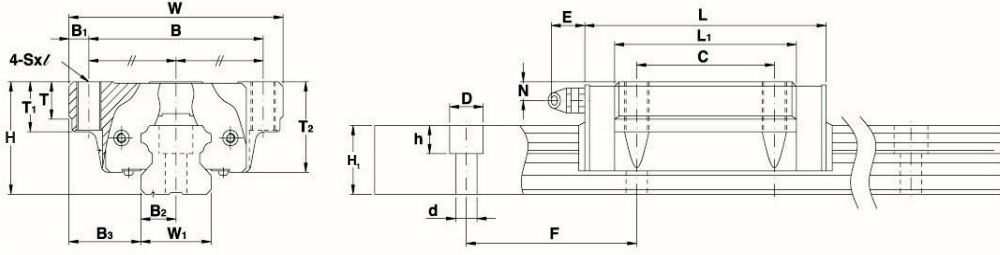


Model	Genişlik (W)	Uzunluk (L)	Yükseklik (H)	Delik Merkezleri	
				B	C
HLAG 15 CA	47	61.4	24	38	30
HLAG 20 CA	63	77.5	30	53	40
HLAG 20 HA	63	92.2	30	53	40
HLAG 25 CA	70	84	36	57	45
HLAG 25 HA	70	104.6	36	57	45
HLAG 30 CA	90	97.4	42	72	52
HLAG 30 HA	90	120.4	42	72	52
HLAG 35 CA	100	112.4	48	82	62
HLAG 35 HA	100	138.2	48	82	62
HLAG 45 CA	120	139.4	60	100	80

HERMANN Dar - Dar Uzun

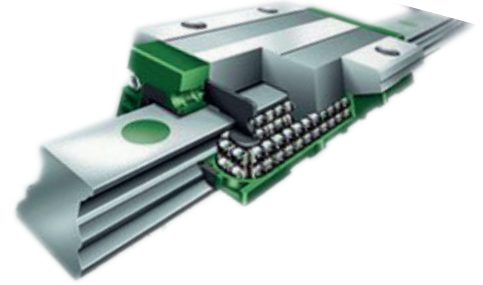


Model	Genişlik (W)	Uzunluk (L)	Yükseklik (H)	Delik Merkezleri	
				B	C
HLAD 15 CA	34	61.4	28	26	26
HLAD 20 CA	44	77.5	30	32	36
HLAD 20 HA	44	92.2	30	32	50
HLAD 25 CA	48	84	40	35	35
HLAD 25 HA	48	104.6	40	35	50
HLAD 30 CA	60	97.4	45	40	40
HLAD 30 HA	60	120.4	45	40	60
HLAD 35 CA	70	112.4	55	50	50
HLAD 35 HA	70	138.2	55	50	72
HLAD 45 CA	86	139.4	70	60	80



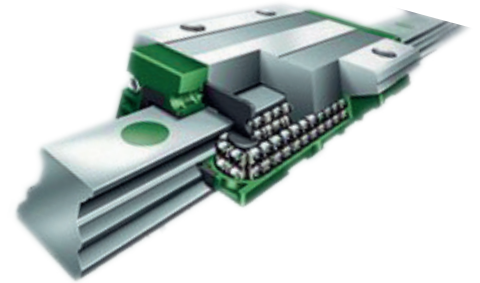
INA Dar Seriler

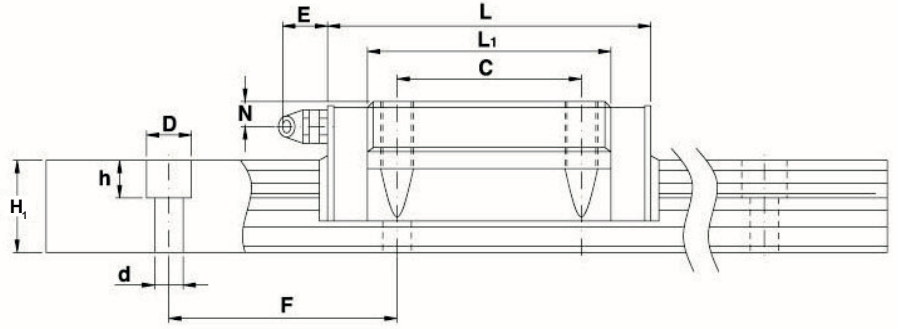
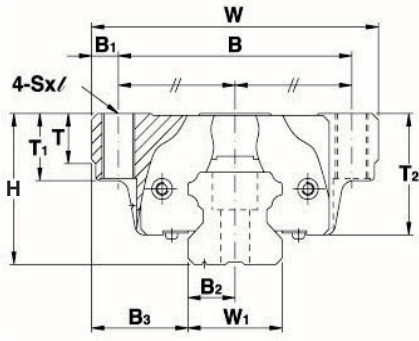
Model	Genişlik (W)	Uzunluk (L)	Yükseklik (H)	Delik Merkezleri	
				B	C
KWVE 15 BESC	34	44.5	24	26	-
KWVE 15 B-H	34	61	28	26	26
KWVE 15 B-S	34	61	24	26	26
KWVE 20 BS	44	71.4	30	32	36
KWVE 20 BH	44	71.4	30	32	-
KWVE 20 BSN	44	71.4	27	32	36
KWVE 20 BES	44	71.4	28	32	32
KWVE 20 BSL	44	88.9	30	32	50
KWVE 25 BESC	48	58.2	33	35	-
KWVE 25 B-H	48	83.3	40	35	35
KWVE 25 B-S	48	83.3	36	35	35
KWVE 25 B-ES	48	83.3	33	35	35
KWVE 25 B-HL	48	109.1	40	35	50
KWVE 30 BH	60	99	45	40	40
KWVE 30 BS	60	99	42	40	40
KWVE 30 BHC	60	127	45	40	60
KWVE 35 B-H	70	112	55	50	50
KWVE 35 BS	70	112	48	50	50
KWVE 35 BHC	70	145	55	50	72
KWVE 45 BH	86	140.6	70	60	60
KWVE 45 BS	86	140.6	60	60	60
KWVE 45 BHC	86	172.7	70	60	80
KWVE 45 BSL	86	172.7	60	60	80



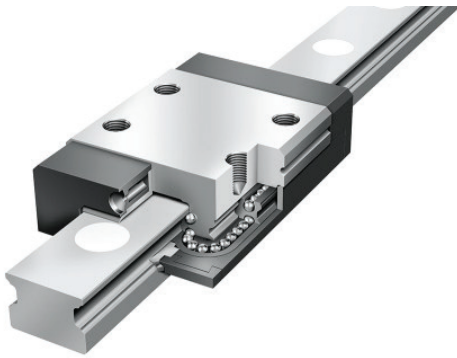
INA Geniş Seriler

Model	Genişlik (W)	Uzunluk (L)	Yükseklik (H)	Delik Merkezleri	
				B	C
KWVE 15 B	47	61.2	24	38	30
KWVE 20 B	63	71.4	30	53	40
KWVE 20 B-L	63	88.9	30	53	40
KWVE 25 B	70	83.3	36	57	45
KWVE 25 B-L	70	109.1	36	57	45
KWVE 25 B-N	70	83.3	31	57	45
KWVE 25 B-NL	70	109.1	31	57	45
KWVE 30 B	90	99.0	42	72	52
KWVE 30 B-L	90	127.0	42	72	52
KWVE 30 B-N	90	99.0	38	72	52
KWVE 35 B	100	112.0	48	82	62
KWVE 35 B-L	100	145.0	48	82	62
KWVE 45 B	120	140.6	60	100	80
KWVE 45 B-L	120	172.7	60	100	80



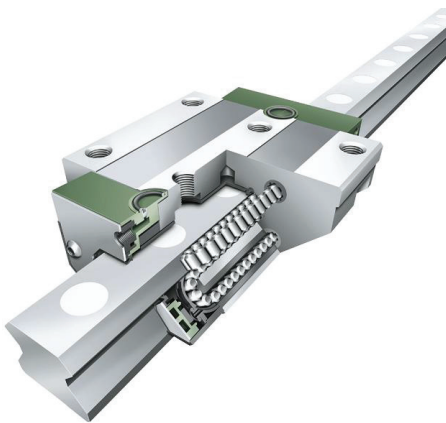


INA Minyatür Seriler

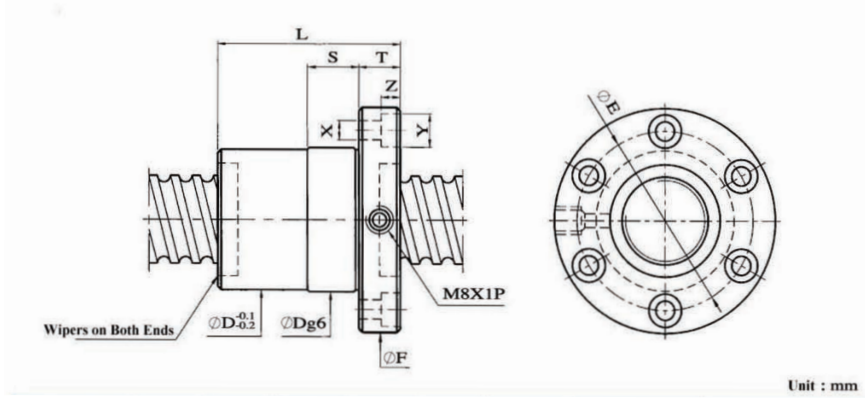


Model	Genişlik (W)	Uzunluk (L)	Yükseklik (H)	Delik Merkezleri	
				B	C
KWEM 5	12	19	6	8	-
KWEM 7	17	23.5	8	12	8
KWEM 9	20	30	10	15	10
KWEM 12	27	34	13	20	15
KWEM 15	32	42	16	25	20
KWEM 5 W	17	24.5	6.5	13	-
KWEM 7 W	25	31.5	9	19	00
KWEM 9 W	30	39	12	21	12
KWEM 12 W	40	44	14	28	15
KWEM 15 W	60	55	16	45	20

INA Masuralı Seriler



Model	Genişlik (W)	Uzunluk (L)	Yükseklik (H)	Delik Merkezleri	
				B	C
RWVE 25 E	70	91	36	57	45
RWVE 25 EL	70	107	36	57	45
RWVE 35 E	100	122.9	48	82	62
RWVE 35 EL	100	148.7	48	82	62
RWVE 35 EH	70	122.9	55	50	50
RWVE 35 EHC	70	148.7	55	50	72
RWVE 45 E	120	145.9	60	100	80
RWVE 45 EL	120	178.3	60	100	80
RWVE 45 EH	86	145.9	70	60	60
RWVE 45 EHL	86	178.3	70	60	80
RWVE 55 E	140	172.7	70	116	70
RWVE 55 EL	140	210.7	70	116	70
RWVE 55 EHL	100	210.7	80	75	95
RWVE 65 E	170	195.5	90	116	95
RWVE 65 EL	170	261.9	90	116	95



WINMAN Vidalı Mil ve Somunlar

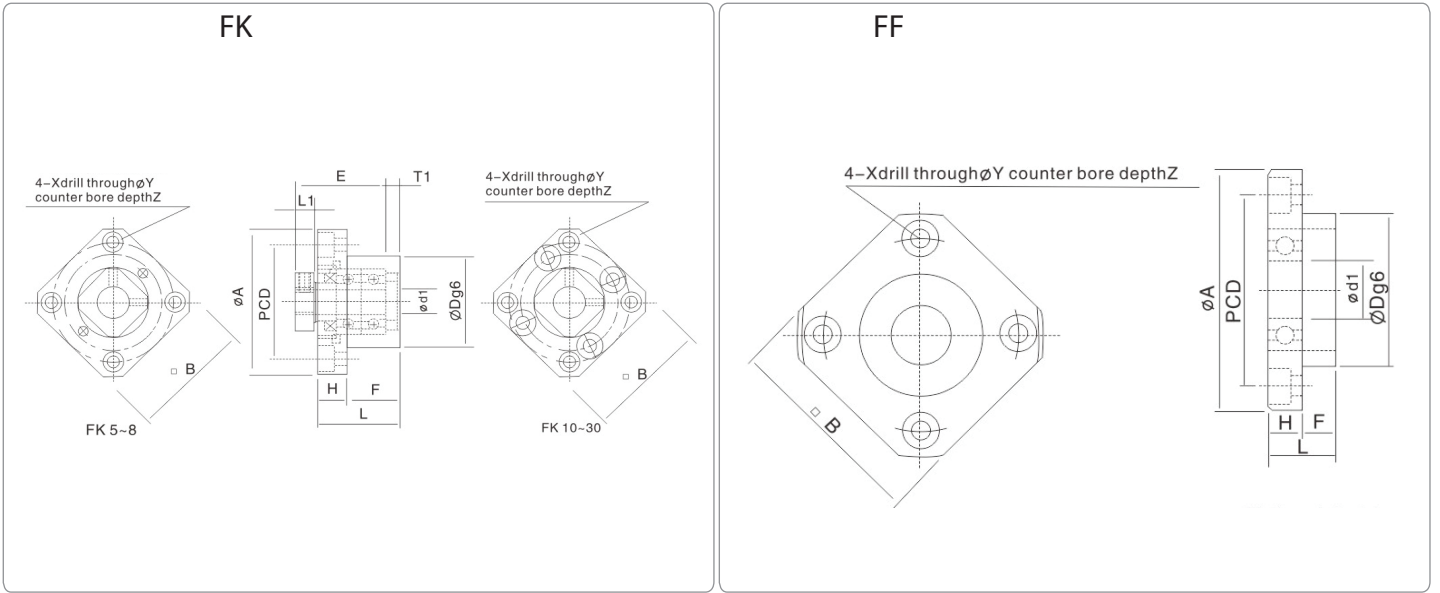
Model	Uzunluk (L)	Çap (F)	Delik Ekseni (E)
R12X4	46	42	31
R16X5	50	49	39
R20X5	53	57	45
R25X5	46	64	51
R25X10	64	64	51
R32X5	53	74	60
R32X10	90	88	72
R40X5	66	90	72
R40X10	93	106	84
R50X10	93	110	93



INA Vidalı Mil ve Somunlar

Model	Uzunluk (L)	Çap (F)	Delik Ekseni (E)
KGF16X5	42	48	38
KGF16X10	65	48	38
KGF20X5	53	58	47
KGF20X10	68	58	47
KGF25X5	53	62	51
KGF25X10	85	62	51
KGF25X25	67	62	51
KGF32X5	53	80	65
KGF32X10	90	80	65
KGF32X32	82	80	65
KGF40X5	56	93	78
KGF40X10	93	93	78
KGF40X40	100	93	78
KGF50X10	93	110	93
KGF63X10	98	125	108
KGF63X20	138	135	115





WINMAN FK Serileri

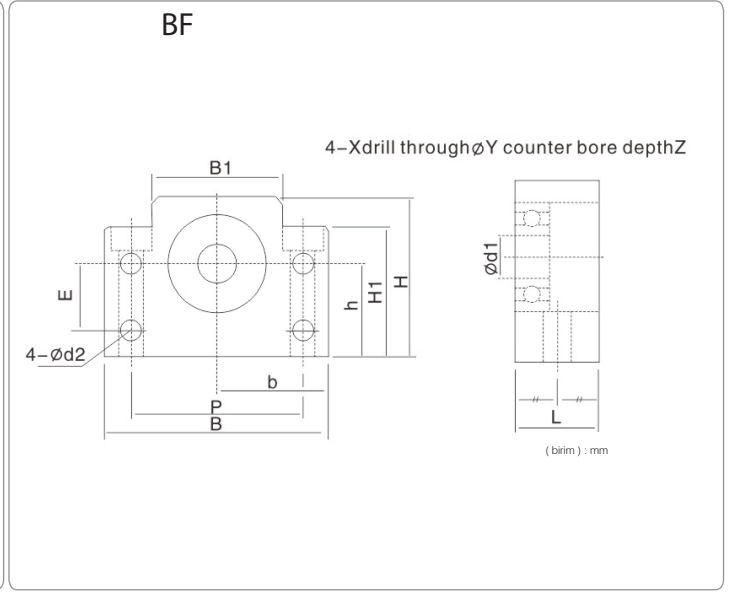
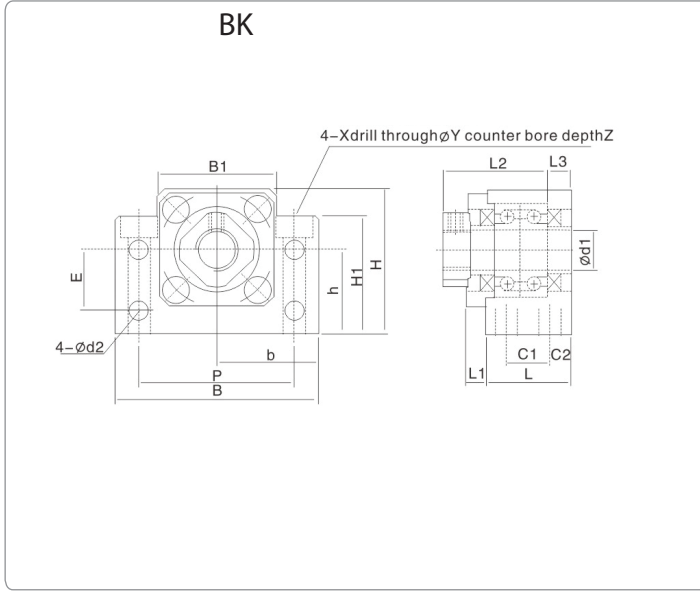


Model	d1	L	H	F	Dg6	A	PCD	L1	T1
FK 5	5	16.5	6	10.5	20	34	26	5.5	3.5
FK 6	6	20	7	13	22	36	28	5.5	3.5
FK 8	8	23	9	14	28	43	35	7	4
FK 10	10	27	10	17	34	52	42	7.5	5
FK 12	12	27	10	17	36	54	44	7.5	5
FK 15	15	32	15	17	40	63	50	10	6
FK 17	17	45	22	23	50	77	62	11	9
FK 20	20	52	22	30	57	85	70	8	10
FK 25	25	57	27	30	63	98	80	13	10
FK 30	30	62	30	32	75	117	95	11	12

WINMAN FF Serileri



Model	d1	L	H	F	Dg6	A	PCD	B
FF 6	6	10	6	4	22	36	28	28
FF 10	8	12	7	5	28	43	35	35
FF 12	10	15	7	8	34	52	42	42
FK 15	15	17	9	8	40	63	50	50
FK 17	17	20	11	9	50	77	62	62
FK 20	20	20	11	9	57	85	70	70
FK 25	25	24	14	10	63	98	80	80
FK 30	30	27	18	9	75	117	95	95



WINMAN BK Serileri

mm

Model	d1	L	L1	L2	L3	b ±0.02	h ±0.02	B1	H1	E	P	d2
BK 10	10	25	5	29	5	30	22	34	32.5	15	46	5.5
BK 12	12	25	5	29	5	60	25	34	32.5	18	46	5.5
BK 15	15	27	6	32	6	70	28	40	38	18	54	5.5
BK 17	17	35	9	44	7	86	39	50	55	28	68	6.6
BK 20	20	35	8	43	8	88	34	52	50	22	70	6.6
BK 25	25	42	12	54	9	106	48	64	70	33	85	9
BK 30	30	45	14	61	9	128	51	76	78	33	102	11
BK 35	35	50	14	67	12	140	52	88	79	35	114	11
BK 40	40	61	18	76	15	160	60	100	90	37	130	14



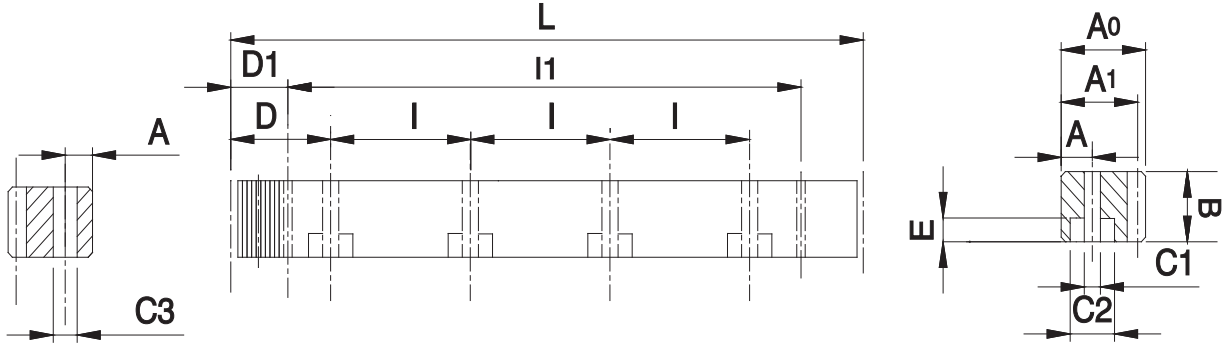
WINMAN BF Serileri

mm

Model	d1	L	B	H	b ±0.02	h ±0.02	B1	H1	E	P	d2
BF 10	8	20	60	39	30	22	34	32.5	15	46	5.5
BF 12	10	20	60	43	30	25	34	32.5	18	46	5.5
BF 15	15	20	70	48	35	28	40	38	18	54	5.5
BF 17	17	23	86	64	43	39	50	55	28	68	6.6
BF 20	20	26	88	60	44	34	52	50	22	70	6.6
BF 25	25	30	106	80	53	48	64	70	33	85	9
BF 30	30	32	128	89	64	51	76	78	33	102	11
BF 35	35	32	140	96	70	52	88	79	35	114	11
BF 40	40	37	160	110	80	60	100	90	37	130	14

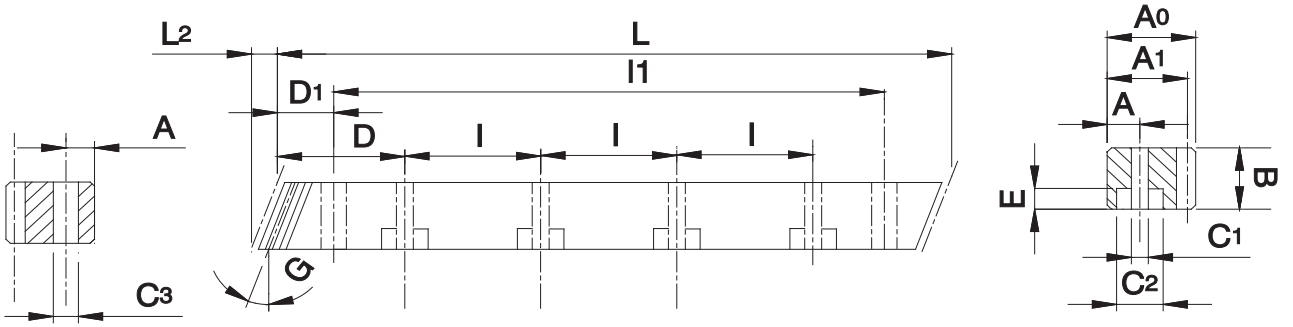


WINMAN Düz Kremayerler (Delikli) (Soft)



Modül	B	A ₀	A ₁	L (mm)
1,5	19	19	17,5	2000
2	24	24	22	2000
3	29	29	26	2000
4	39	39	35	2000

WINMAN Helis Kremayerler (Delikli)



WINMAN Helis Kremayerler (Delikli) (Soft)

Modül	B	A ₀	A ₁	L (mm)
1,5	19	19	17,5	2000
2	24	24	22	2000
3	29	29	26	2000
4	39	39	35	2000



WINMAN Helis Kremayerler (Delikli) Taşlanmış ve Sertleştirilmiş

Modül	B	A ₀	A ₁	L (mm)
1,5	19	19	17,5	2000
2	24	24	22	2000
3	29	29	26	2000
4	39	39	35	2000

WINMAN Servo Kaplinler

Model	İç Çap		Dış Çap	Boy	Max. Tork (Nm)	Max. Hız Dev/dk
	min.	max.				
WJM 14C 64D	3	7	14	22	4,8	25000
WJM 20C 64D	4	10	20	30	12	25500
WJM 25C 64D	4	12	25	34	24	17000
WJM 30C 64D	5	16	30	35	32	12000
WJM 40C 98A	6	24	40	66	42	9000
WJM 55C 64D	8	28	55	78	150	6500
WJM 65C 64D	10	38	65	90	400	5260
WJM 80C 64D	12	45	80	114	810	4600
WJM 105C 98A	15	62	105	140	1050	3300



WINMAN Servo Kaplinler

Model	İç Çap		Dış Çap	Boy	Max. Tork (Nm)	Max. Hız Dev/dk
	min.	max.				
WJM 14 64D	3	7	14	22	4,8	25000
WJM 20 64D	4	10	20	30	12	25500
WJM 25 64D	4	12	25	34	24	17000
WJM 30 64D	5	16	30	35	32	12000
WJM 40 98A	6	24	40	66	42	9000
WJM 55 64D	8	28	55	78	150	6500
WJM 65 64D	10	38	65	90	400	5260
WJM 80 64D	12	45	80	114	810	4600
WJM 105 98A	15	62	105	140	1050	3300



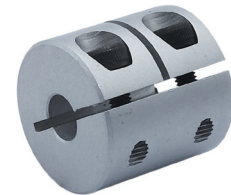
WINMAN Radyal Esnek Kaplinler

Model	İç Çap		Dış Çap	Boy	Max. Tork (Nm)	Max. Hız Dev/dk
	min.	max.				
WJT 16C	5	8	16	23	1	24000
WJT 20C	5	10	20	26	2	20000
WJT 25C	5	12	25	31	4	15000
WJT 32C	6	16	30	41	8	12000
WJT 40C	8	20	40	56	16	9000
WJT 50C	10	25	50	71	16	7000
WJT 63C	14	35	63	90	64	6000

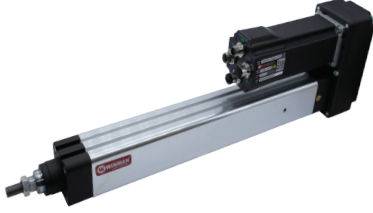


WINMAN Rijit Kaplinler

Model	İç Çap		Dış Çap	Boy	Max. Tork (Nm)	Max. Hız Dev/dk
	min.	max.				
WJR 16	4	6	16	0,6	1	20000
WJR 16C	5	6	16	0,6	2	18000
WJR 20C	5	10	20	1	4	16000
WJR 25C	5	12	25	2	8	16000
WJR 32C	6	10	32	4	16	14000
WJR 43C	10	22	43	9	16	10000
WJR 53C	12	26	53	22	64	6000



WINMAN Servo Kontrollü Linear Aktüatör



Boyut		032	040	063	080	100
Max. Eksenel Kuvvet	N	800	1250	3100	5000	8000
Max. Hız	mm/s	500	500	1000	500	500
Max. Strok	mm	400	600	600	600	600
Pozisyonlama Hassasiyeti	$\mu\text{m}/\text{mm}$	53/300				
Tekrarlama Hassasiyeti	mm	< 0,05				
İvmelenme Max.	m/s^2	10				

WINMAN Servo Kontrollü Linear Aktüatör



WLCA Serisi



WLCG Serisi

Boyut		032	040
Max. Eksenel Kuvvet	N	800	1250
Max. Hız	mm/s	500	500
Max. Strok WLCA Serisi	mm	300	400
Max. Strok WLCG Serisi	mm	150	200
Pozisyonlama Hassasiyeti	$\mu\text{m}/\text{mm}$	53/300	
Tekrarlama Hassasiyeti	mm	< 0,05	
İvmelenme Max.	m/s^2	10	

WINMAN Servo Kontrollü Linear Aktüatör



Boyut		032	040	063
Max. Eksenel Kuvvet	N	800	1250	3100
Max. Hız	mm/s	500	500	1000
Max. Strok	mm	50-80-100-160-200		
Pozisyonlama Hassasiyeti	$\mu\text{m}/\text{mm}$	53/300		
Tekrarlama Hassasiyeti	mm	< 0,05		
İvmelenme Max.	m/s^2	10		

WINMAN DC Motorlu Linear Aktüatör

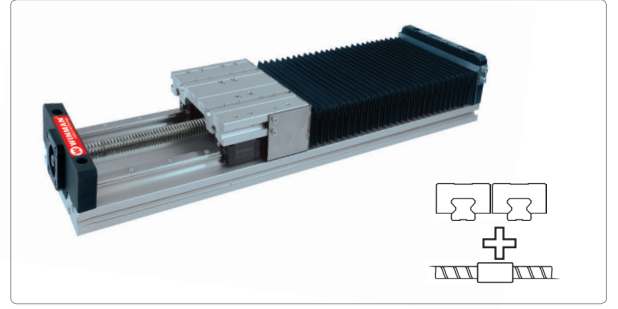


Kod	İtme Kuvveti [N]	Çekme Kuvveti [N]	Hız [mm/s]	Voltaj	IP Sınıfı	S [mm] Strok	A [mm]
WEEKS-24-04-30	6000	4000	4	24V DC	44	30	190
WEEKS-24-04-50	6000	4000	4	24V DC	44	50	210
WEEKS-24-04-100	6000	4000	4	24V DC	44	100	260
WEEKS-24-04-150	2000	1000	12	24V DC	44	150	310
WEEKS-24-04-200	6000	4000	4	24V DC	44	200	360
WEEKS-24-04-300	6000	4000	4	24V DC	44	300	480
WEEKS-24-04-500	6000	4000	4	24V DC	44	500	750

WINMAN Vidalı Milli Linear Sistemler

Modül Tipi			WMZD-140	WMZD-170
Statik Yük	Co	kN	55,2	97,2
Dinamik Yük	C	kN	34,0	56,4
Maximum Strok		mm	1500	1500
Pozisyonlama Hassasiyeti		$\mu\text{m}/\text{mm}$	53/300	53/300
Tekrarlama Hassasiyeti		mm	< 0,05	< 0,05
İvmelenme Max.		m/s^2	10	10

Not : Verilen değerler teorik değerlerdir. Emniyet kat sayısını 5 almanızı öneririz.



WINMAN Triger Kayışlı Linear Sistemler

Modül Tipi			WMCS-40	WMCS-65	WMCS-80
Dinamik Yük	C	kN	4,7	18,5	28,7
Maximum Strok		mm	2500	2750	4750
Tekrarlama Hassasiyeti		mm	< 0,1	< 0,1	< 0,1
İvmelenme Max.		m/s^2	50	50	50

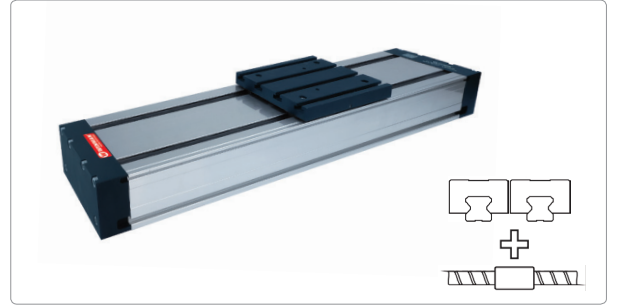
Not : Verilen değerler teorik değerlerdir. Emniyet kat sayısını 5 almanızı öneririz.



WINMAN Vidalı Milli Linear Sistemler

Modül Tipi			WMCD-110	WMCD-145
Dinamik Yük	C	kN	37,0	57,7
Maximum Strok		mm	1400	1600
Tekrarlama Hassasiyeti		mm	<0,05	<0,05
İvmelenme Max.		m/s^2	10	10

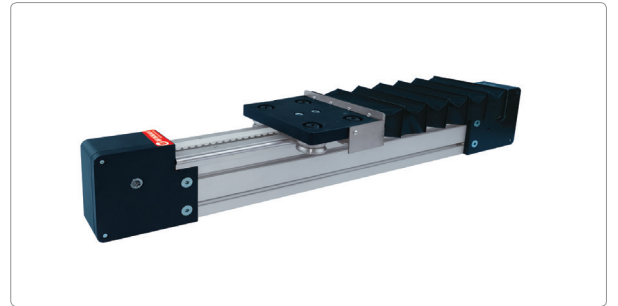
Not : Verilen değerler teorik değerlerdir. Emniyet kat sayısını 5 almanızı öneririz.

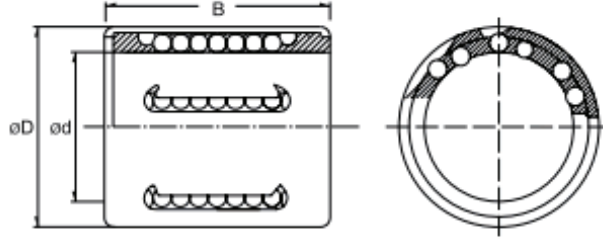


WINMAN Triger Kayışlı Linear Sistemler

Modül Tipi			WMAD 210
Statik Yük	Co	kN	260
Dinamik Yük	C	kN	240
Maximum Strok		mm	4750
Tekrarlama Hassasiyeti		mm	53/300
İvmelenme Max.		m/s^2	<0,05
İvmelenme Max.		m/s^2	10

Not : Verilen değerler teorik değerlerdir. Emniyet kat sayısını 5 almanızı öneririz.





WINMAN-INA KH Serileri

Model	Ölçüler			Yükleme Kapasitesi	
	Ød	ØD	B	Dinamik	Statik
KH-0622 PP	6.0	12	22.0	400	239
KH-0824 PP	8.0	15	24.0	435	280
KH-1026 99	10.0	17	26.0	500	370
KH-1228 PP	12.0	19	28.0	620	510
KH-1428 PP	14.0	21	28.0	620	520
KH-1630 PP	16.0	24	30.0	800	620
KH-2030 PP	20.0	28	30.0	950	790
KH-2540 PP	25.0	35	40.0	1990	1670
KH-3050 PP	30.0	40	50.0	2800	2700
KH-4060 PP	40.0	52	60.0	4400	4450
KH-5070 PP	50.0	62	70.0	5500	6300



INA KB Serileri

Model	Ölçüler			Yükleme Kapasitesi	
	Ød	ØD	B	Dinamik	Statik
KB-12 PP	12.0	22	32	640	570
KB-16 PP	16.0	26	36	840	670
KB-20 PP	20.0	32	45	1570	1230
KB-25 PP	25.0	40	58	2800	2220
KB-30 PP	30.0	47	68	3600	2850
KB-40 PP	40.0	62	80	6000	4400
KB-50 PP	50.0	75	100	8700	6300



INA KBO Serileri

Model	Ölçüler			Yükleme Kapasitesi	
	Ød	ØD	B	Dinamik	Statik
KBO-12 PP	12.0	22	32	600	570
KBO-16 PP	16.0	26	36	800	620
KBO-20 PP	20.0	32	45	1600	1280
KBO-25 PP	25.0	40	58	2850	2300
KBO-30 PP	30.0	47	68	3700	2950
KBO-40 PP	40.0	62	80	6200	4400
KBO-50 PP	50.0	75	100	8700	6300



WINMAN WPL Serileri

Model	Tahvil Oranı
WPL70L1-3P2-S2-OP2	3:1
WPL90L1-3P2-S2-OP2	3:1
WPL120L1-3P2-S2-OP2	3:1
WPL70L1-5P2-S2-OP2	5:1
WPL90L1-5P2-S2-OP2	5:1
WPL120L1-5P2-S2-OP2	5:1
WPL70L1-10P2-S2-OP2	10:1
WPL90L1-10P2-S2-OP2	10:1
WPL120L1-10P2-S2-OP2	10:1
WPL70L2-15P2-S2-OP2	15:1
WPL90L2-15P2-S2-OP2	15:1
WPL120L2-15P2-S2-OP2	15:1
WPL70L2-20P2-S2-OP2	20:1
WPL90L2-20P2-S2-OP2	20:1
WPL120L2-20P2-S2-OP2	20:1
WPL70L2-32P2-S2-OP2	32:1
WPL90L2-32P2-S2-OP2	32:1
WPL120L2-32P2-S2-OP2	32:1



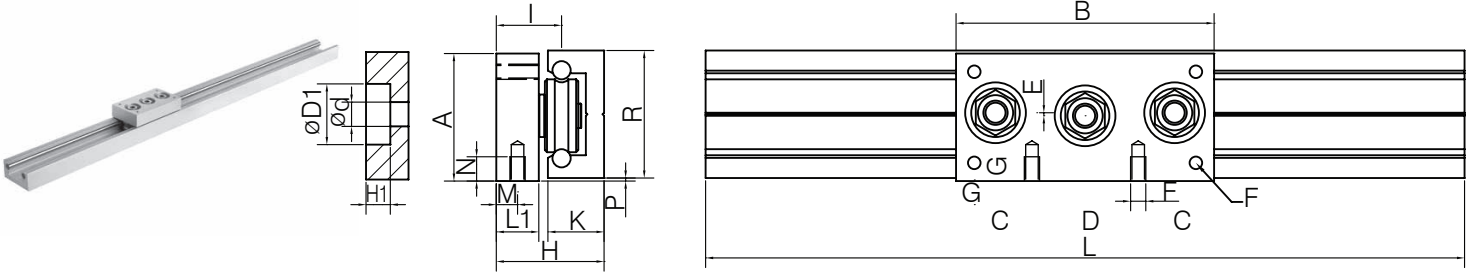
WINMAN WIE Serileri

Model	Tahvil Oranı
WIE70L1-3P2-S2-OP2	3:1
WIE90L1-3P2-S2-OP2	3:1
WIE120L1-3P2-S2-OP2	3:1
WIE70L1-5P2-S2-OP2	5:1
WIE90L1-5P2-S2-OP2	5:1
WIE120L1-5P2-S2-OP2	5:1
WIE70L1-10P2-S2-OP2	10:1
WIE90L1-10P2-S2-OP2	10:1
WIE120L1-10P2-S2-OP2	10:1
WIE70L2-15P2-S2-OP2	15:2
WIE90L2-15P2-S2-OP2	15:2
WIE120L2-15P2-S2-OP2	15:2
WIE70L2-20P2-S2-OP2	20:2
WIE90L2-20P2-S2-OP2	20:2
WIE120L2-20P2-S2-OP2	20:2
WIE70L2-32P2-S2-OP2	32:2
WIE90L2-32P2-S2-OP2	32:2
WIE120L2-32P2-S2-OP2	32:2



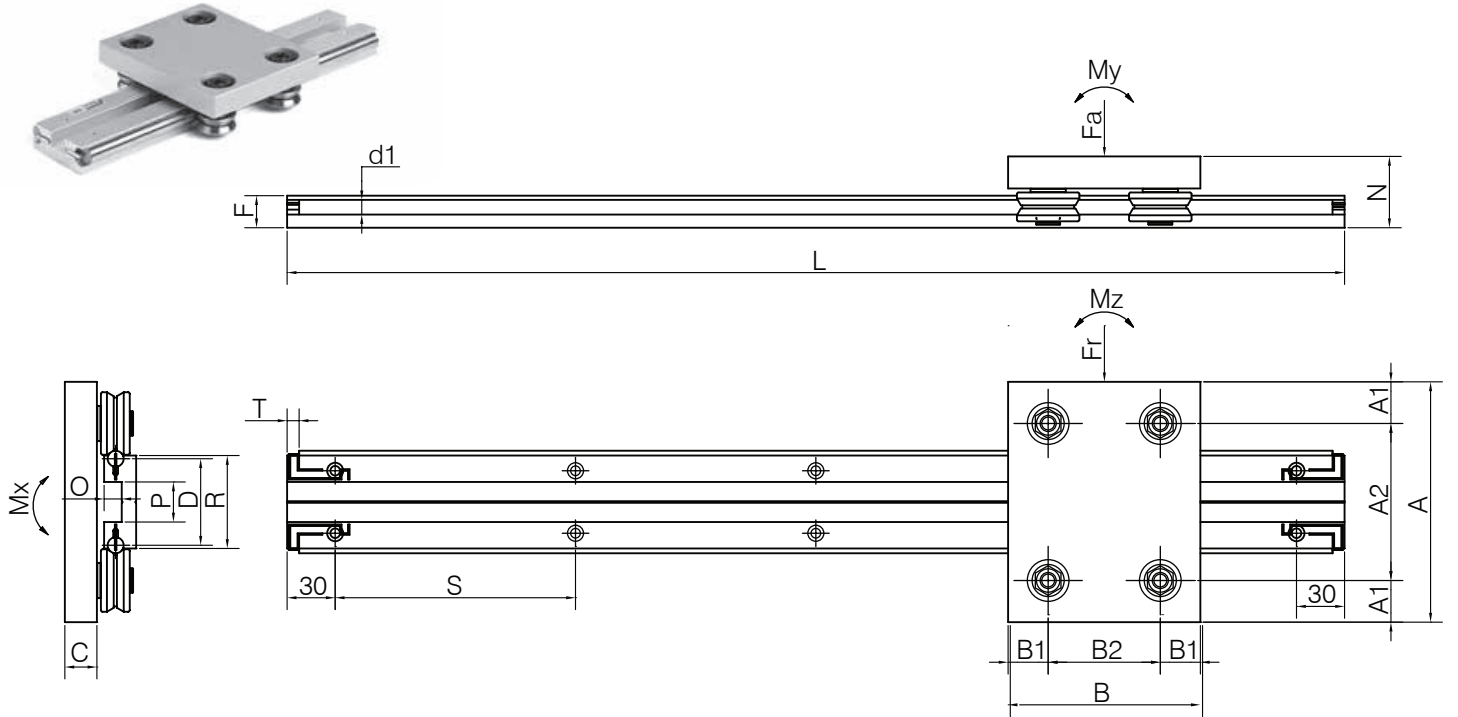
**TİP: WIE Serisi Monoblok
Konum Hassasiyeti Yüksek**

Hassas Raylı Sistemler



Model	A	B	C	D	D1	dH10	E	F	G	H	H1	I	K	L1	M	N	P	R	Lmax
CI 32-17	32	65	20,5	24	16	5	0,5	M4	4	28,5	6	18	15,5	11	5,5	6	0,5	32	6000
CI 42-24	42	85	25	35	20	8	1	M5	5	35,5	8	21,5	18,5	14	7	8	1	42	6000
CI 65-35	65	115	27	60	26	10	1,2	M6	10	57,5	14	34	32	24	14	10	1,2	65	6000

Profil Makaralı Sistemler



Model	A	A1	A2	B	B1	B2	C	D	F	Lmax	d1	N	P	O	R	S	T
AD 106	120	18,5	83	80	19,5	41	10	54	20	6000	10	31	25	11	58	150	7,5
AD 208	140	25	90	120	25	70	15	54	20	6000	10	37	25	11	58	150	7,5
AD 208 R	140	25	90	120	25	70	20	54	20	6000	10	42	25	11	58	150	7,5
AD 210	150	26	98	120	25	70	20	54	20	6000	10	44	25	11	58	150	7,5
AD 312	180	27	126	150	30	90	20	70	30	6000	20	51	20	17	58	300	5
AD 316	180	27	126	150	30	90	25	70	30	6000	20	61,5	20	17	75	300	5
AD 416	200	30	140	180	40	100	25	70	30	6000	20	61,5	20	17	75	300	5
AD 416 R	200	30	140	180	40	100	25	70	30	6000	20	61,5	20	17	75	300	5
AD 420	200	30	140	180	40	100	25	70	30	6000	20	61,5	20	17	75	300	5