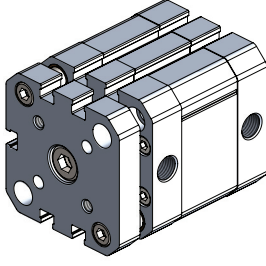


## WPCG - Serisi Dönmez Kompakt Silindirler / WPCG - Series Non-Rotating Compact Cylinders

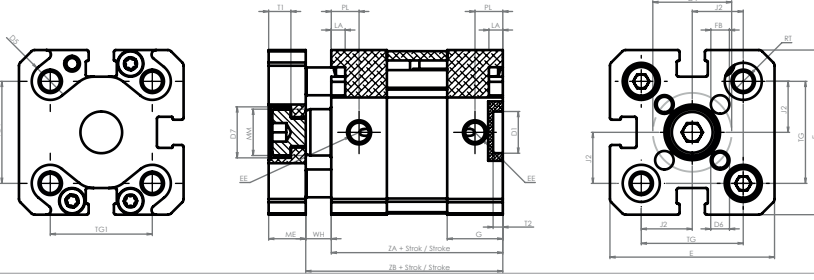


## Özellikler / Specification

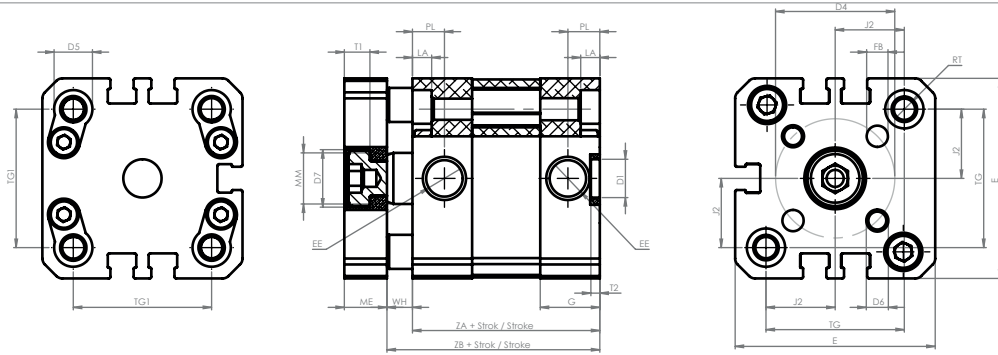
Piston Çapı / Bore Size	20	25	32	40	50	63
Strok / Stroke	5-10-15-20-25-30-40-50-60 (1...200)			5-10-15-20-25-30-40-50-60-80 (1...400)		
Çalışma Tipi / Acting Type	Çift Etkili / Double Acting					
Akışkan / Fluid	Hava (40µm filtrelenmiş) / Air (40µm filtered)					
Çalışma Basıncı / Op. Pressure	< 10 Bar					
Sıcaklık / Temperature	0 ~ +80 °C					
Manyetik / Magnetic	Standart / Standard					
Yastıklama Tipi / Cush. Type	Damper / Bumper					
Hız / Speed Range	< 500 mm/s					
Sensör / Sensor Switches	WT-65					

Açıklamalar : \* Sadece Ø32, Ø40, Ø50 de geçerlidir. \*\* Standart dışı kurs için sorunuz.

## Teknik Çizim / Technical Drawing



Ø mm	D1 Ø H9	D4 Ø ±0.1	D5 Ø	D6 Ø	D7 Ø H9	E	EE	FB Ø H8	G	J2	LA +0.2	ME	MM Ø H8	PL +0.2	RT	T1	T2 +0.1	TG +0.2	TG1	WH +1.3	ZA +0.3	ZB +1.2
20	9	17	8	M4	11	35,50	M5	4	12	11	3	8	10	6	M5	4,80	2,10	22	22	5,50	37	42,50
25	9	22	8	M5	14	39,50	M5	5	12	13	3	8	10	6	M5	4,80	2,10	26	26	5,50	39	44,50



Ø mm	D1 Ø	D4 Ø	D5 Ø	D6 Ø	D7 Ø	E	EE	FB Ø	G	J2	LA	ME	MM Ø	PL	RT	T1	T2	TG	TG1	WH	ZA	ZB
32	9	28	9	M5	13,50	47	G1/8	5	14	16,25	4,50	10	12	7,50	M6	6	2,10	32,50	32,50	6	55	50
40	9	33	9	M5	13,50	54,50	G1/8	5	14	19	5	10	12	7,20	M6	6	2,10	38	38	6	45	51
50	12	42	12	M6	18	65,50	G1/8	6	13,80	23,25	5	12	16	7,30	M8	7,50	2,60	46,50	46,50	7,60	55	62,6
63	12	50	12	M6	18	75,50	G1/8	6	14	28,25	5	12	16	7,50	M8	7,50	2,60	56,50	56,50	7,50	49	56,5

## Sipariş Kodu / Ordering Code

MODEL	OPSİYON OPTIONS	MANYETİK MAGNETIC	ÇAP DIA.	STROK STROKE	STROK STROKE	MİL MALZEMESİ ROD MATERIAL	MİL UZUNLUĞU ROD LENGTH	DİŞ TİPİ SCREW TYPE	DİŞ ÖLÇÜSÜ SCREW SIZE	DİŞ UZUNLUĞU SCREW LENGTH
WPCG-G	<b>D</b>	<b>M</b>	<b>Ø32</b>	<b>Ø050</b>	<b>Ø050</b>	<b>SS</b>	<b>L25</b>	<b>F</b>	<b>ZM.8.H1.0</b>	<b>E15</b>

BOŞ : STANDART T : TANDEM PT : POZİSYONER D : ÇİFT MİLLİ J : STROK AYARLI FS : ÖNDEN YAYLI (50mm ye Kadar) RS : ARKADAN YAYLI (50mm ye Kadar) V : SICAĞA DAYANIKLI 150° Sıcaklığa Kadar LR : YAĞDA ÇALIŞABİLEN 6 Bar Basıncı Yağda	- Blank Standart - Tandem - Positioner - Through Rod - Stroke Adjustable - Front Spring (Up to 50mm) - Rear Spring (Up to 50mm) - Heat Resistance (Up to 150°C) - Hydro-pneumatic (6 bar oil pressure)	BOŞ :MANYETİKSİZ Blank :Without Magnet  M :MANYETİK M :With Magnet	PISTON ÇAP (mm) Piston Dia	STROK (mm) Stroke	STROK (mm) Stroke	SS :PASLANMAZ Inox  SADECE POZİSYONER İÇİN Only Positioner Cylinders	BOŞ :STANDART Blank :Standart	BOŞ :STANDART Blank :Standart	BOŞ :STANDART Blank :Standart	Hx :ÇAP Dia Hx :Havne Pitch  BOŞ :STANDART Blank :Standart	Ex (mm) Blank :Standart
------------------------------------------------------------------------------------------------------------------------------------------------------------------------------------------------------------------------------------------------------------------------	--------------------------------------------------------------------------------------------------------------------------------------------------------------------------------------------------------------------------------------------	--------------------------------------------------------------------------------	-------------------------------	----------------------	----------------------	----------------------------------------------------------------------------------	----------------------------------	----------------------------------	----------------------------------	------------------------------------------------------------------------------	----------------------------