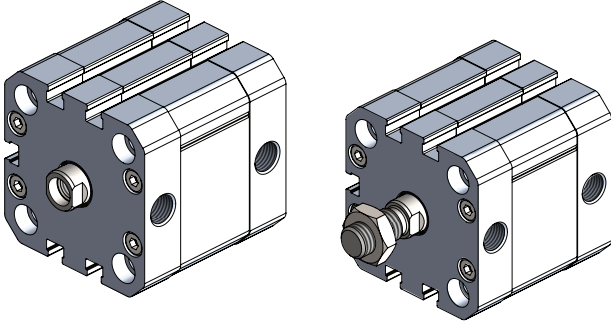


WPCC - Serisi Kompakt Silindirler / WPCC - Series Compact Cylinders

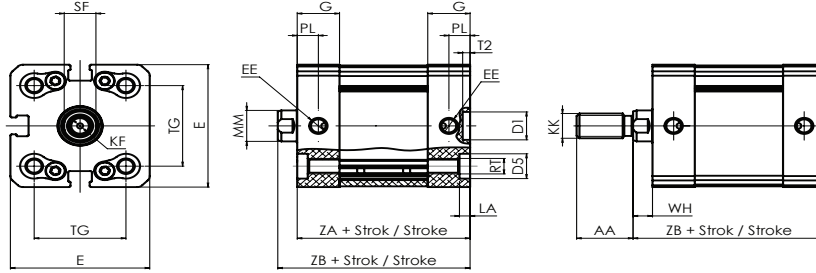


Özellikler / Specification

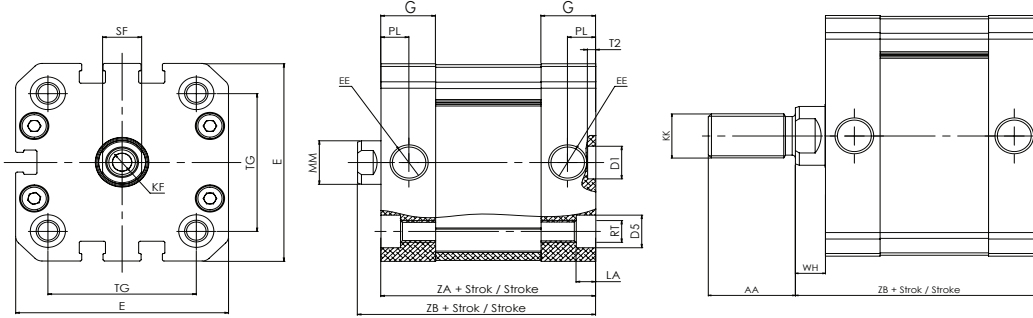
| | | | | | | |
|--------------------------------|--|----|----|---|----|----|
| Piston Çapı / Bore Size | 20 | 25 | 32 | 40 | 50 | 63 |
| Strok / Stroke | 5-10-15-20-25-30-40-50-60 (1...300) | | | 5*-10-15-20-25-30-40-50-60-80 (1...400) | | |
| Çalışma Tipi / Acting Type | Çift Etkili / Double Acting | | | | | |
| Akışkan / Fluid | Hava (40µm filtrelenmiş) / Air (40µm filtered) | | | | | |
| Çalışma Basıncı / Op. Pressure | < 10 Bar | | | | | |
| Sıcaklık / Temperature | 0 ~ +80 °C | | | | | |
| Manyetik / Magnetic | Standart / Standard | | | | | |
| Yastıklama Tipi / Cush. Type | Damper / Bumper | | | | | |
| Hız / Speed Range | < 500 mm/s | | | | | |
| Sensör / Sensör Switches | WT-65 | | | | | |

Açıklamalar : * Sadece Ø32, Ø40, Ø50 de geçerlidir. ** Standart dışı kurs için sorunuz.

Teknik Çizim / Technical Drawing



| Ø mm | AA | D1 Ø | D5 Ø | E | EE | G | KK | LA +0.2 | MM Ø | PL ±0.2 | RT | KF | SF h13 | T2 +0.1 | TG ±0.2 | WH +1.3 | ZA ±0.3 | ZB +1.2 |
|------|----|------|------|-------|----|----|---------|---------|------|---------|----|----|--------|---------|---------|---------|---------|---------|
| 20 | 16 | 9 | 8 | 35,50 | M5 | 12 | M8X1,25 | 3 | 10 | 6 | M5 | M6 | 9 | 2,10 | 22 | 5,50 | 37 | 42,50 |
| 25 | 16 | 9 | 8 | 39,50 | M5 | 12 | M8X1,25 | 3 | 10 | 6 | M5 | M6 | 9 | 2,10 | 26 | 5,50 | 39 | 44,50 |



| Ø mm | AA | D1 Ø | D5 Ø | E | EE | G | KK | LA +0.2 | MM Ø | PL ±0.2 | RT | SF h13 | T2 +0.1 | TG ±0.2 | WH +1.3 | ZA ±0.3 | ZB +1.2 |
|------|------|------|------|------|------|------|----------|---------|------|---------|----|--------|---------|---------|---------|---------|---------|
| 32 | 19 | 9 | 9 | 47 | G1/8 | 14 | M10X1,25 | 4,5 | 12 | 7,5 | M6 | 10 | 2,1 | 32,5 | 6 | 44 | 50 |
| 40 | 19 | 9 | 9 | 54,5 | G1/8 | 14 | M10X1,25 | 5 | 12 | 7,2 | M6 | 10 | 2,1 | 38 | 6 | 45 | 51 |
| 50 | 22 | 12 | 12 | 65,5 | G1/8 | 13,8 | M12X1,25 | 5 | 16 | 7,3 | M8 | 13 | 2,6 | 46,5 | 7,6 | 45 | 52,6 |
| 63 | 29,5 | 12 | 12 | 75,5 | G1/8 | 14 | M12X1,25 | 5 | 16 | 7,5 | M8 | 13 | 2,6 | 56,5 | 7,5 | 49 | 56,5 |

Sipariş Kodu / Ordering Code

| MODEL | OPSİYON OPTIONS | MANYETİK MAGNETIC | ÇAP DIA. | STROK STROKE | STROK STROKE | MİL MALZEMESİ ROD MATERIAL | MİL UZUNLUĞU ROD LENGHT | DIŞ TİPİ SCREW TYPE | DIŞ ÖLÇÜSÜ SCREW SIZE | DIŞ UZUNLUĞU SCREW LENGHT |
|-------|--------------------|----------------------|-------------|-----------------|-----------------|-------------------------------|----------------------------|------------------------|--------------------------|------------------------------|
| WPCC | D | M | Ø32 | 0050 | 0050 | SS | L25 | F | ZM.8.H1.0 | E15 |

| | | | | | | | | | | |
|---|---|--|-------------------------------|----------------------|---|--|--|--|--|-----------------------------|
| BOŞ : STANDART T : TANDEM PT : POZİSYONER D : ÇİFT MİLLİ J : STROK AYARLI FS : ÖNDEN YAYLI RS : ARKADAN YAYLI V : SICAKA DAYANIKLI LR : YAĞDA ÇALIŞABİLEN | - Blank Standart - Tandem - Positioner - Through Rod - Stroke Adjustable - Front Spring (Up to 50mm) - Rear Spring (Up to 30mm) - Heat Resistance (Up to 150°C) - Hydropneumatic (6 Bar basınçlı Yağda) | BOŞ : MANYETİKSİZ Blank : Without Magnet M : MANYETİK M : With Magnet | PISTON ÇAP (mm) Piston Dia | STROK (mm) Stroke | STROK (mm) Stroke SADECE POZİSYONER İÇİN Only Positioner Cylinders | SS : PASLANMAZ Inox BOŞ : STANDART Blank : Standart | LX (mm) - BOŞ : STANDART Blank : Standart | F : Dişi Female BOŞ : STANDART Blank : Standart | Zx : ÇAP Dia Hx : Hatve Pitch BOŞ : STANDART Blank : Standart | Ex (mm) Blank : Standart |
|---|---|--|-------------------------------|----------------------|---|--|--|--|--|-----------------------------|