

KPS Series (Plastic Bag Opening)

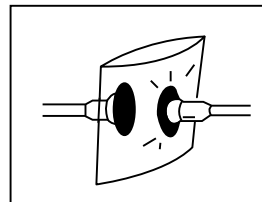
Features and Strengths

Developed to be used for opening plastic bags this cup gives good adhesion to thin plastic and film type materials.



Suitable for Handling

- Plastic Bag Opening
- Thin Film Materials
- Paper Bag Handling



Order No.

KPS-1

U

①

②

① Suction cup Ø

- **KPS-1*** - Ø34
- KPS-2 - Ø28
- KPS-3 - Ø13
- KPS-4 - Ø16
- KPS-5* - Ø28
- KPS-5-15* - Ø15
- KPS-6 - Ø30
- KPS-7 - Ø68
- KPS-8 - Ø25
- KPS-9* - Ø40
- VU-30-X - Ø30

* G1/8" Female fitting available

② Material

- N - NBR
- S - Silicon
- WS - White Silicon
- HS - High Temp. Silicon
- CS - Conductive (Special mat'l)
- **U** - Urethane

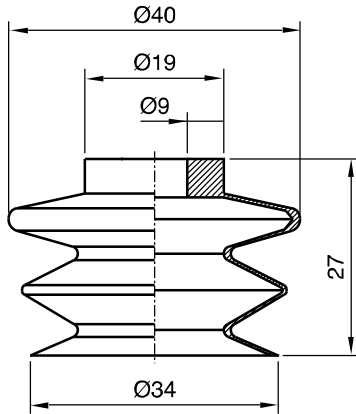
Remark : KPS-8 available only 'S', 'WS', 'HS'

Recommended (max.) lifting forces

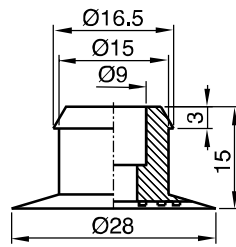
Model	Volume (cm ³)	Lifting Force (kg) - Perpendicular		
		-20 kPa	-60 kPa	-90 kPa
KPS-1	14,5	1,22	2,24	2,75
KPS-2	2,0	0,7	1,53	1,83
KPS-3	0,5	0,35	0,85	1,12
KPS-4	1,0	0,6	1,22	1,63
KPS-5	2,0	0,7	1,53	1,83
KPS-5-15	1,1	0,4	1,11	1,23
KPS-6	2,0	0,8	1,7	2,05
KPS-7	20	5,5	14	18,5
KPS-8	1,4	0,5	1,15	1,25
KPS-9	8	1,55	2,8	5,1
VU-30-X	1,8	0,65	1,48	1,78

Dimensional Information

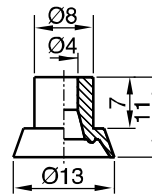
KPS-1



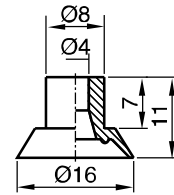
KPS-2



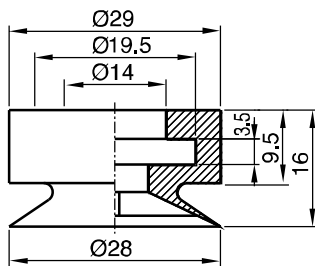
KPS-3



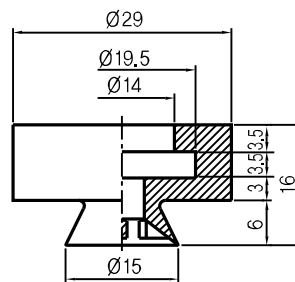
KPS-4



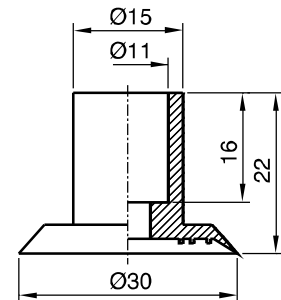
KPS-5



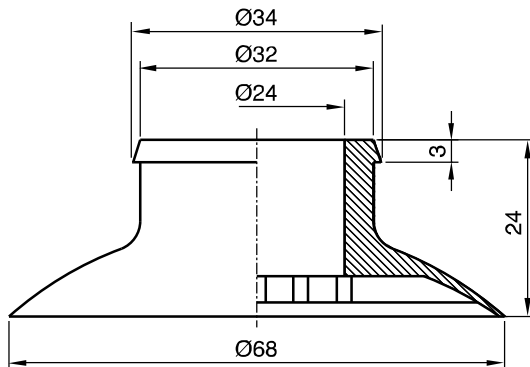
KPS-5-15



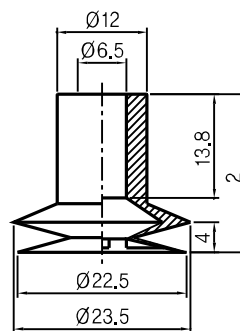
KPS-6



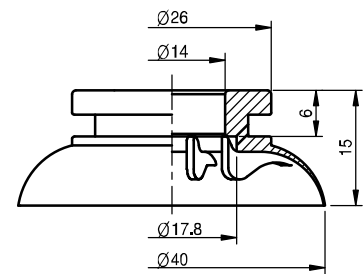
KPS-7



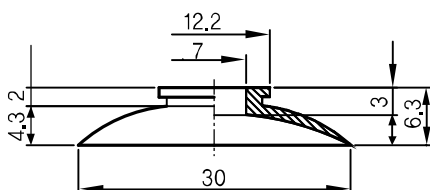
KPS-8



KPS-9



VU-30-X



[Measure unit : mm]