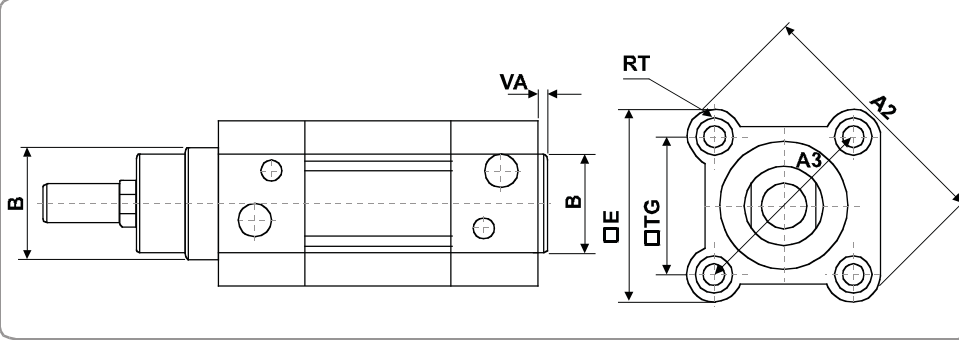


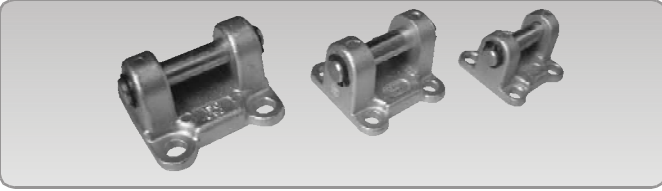
Silindir Bağlantı Elemanları / Cylinder Mounting Parts ISO 15552 (DIN ISO 6431)

Piston Ø	A2	A3	B	E	RT	TG	VA
32	59	46	30	45	M6	32.5	4
40	70.2	53.7	35	54	M6	38	4
50	84.2	65.7	40	65	M8	46.5	4
63	99.5	80	45	76	M8	56.5	4
80	123.8	101.8	45	94	M10	72	5
100	148.8	125.9	55	112	M10	89	6
125	180.5	155.5	60	135	M12	110	7

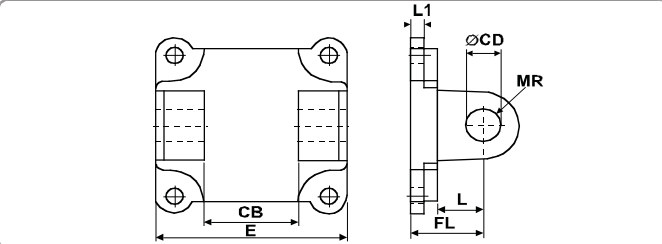


Eklem Bağlantı / Swivel Flange ISO 15552 (DIN ISO 6431)

Kullanıldığı Ürünler / Used Product WAC, WAP, WAHRC



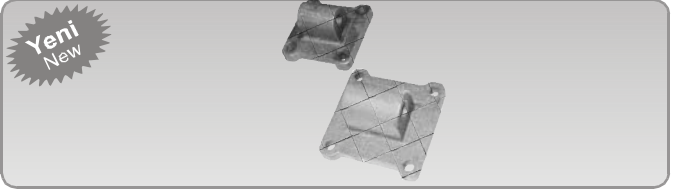
Teknik Çizim / Technical Drawing



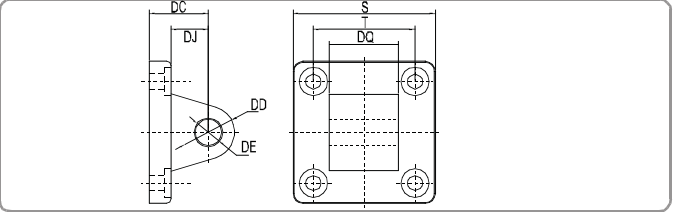
Piston Ø	CB	CD	E	FL	L	L1
32	26	10	45	22	13	9
40	28	12	52	25	16	9
50	32	12	60	27	16	11
63	40	16	70	32	21	11
80	50	16	90	36	22	14
100	60	20	110	41	27	14
125	70	25	130	50	35	15

CA - Eklem Bağlantı / Swivel Flange ISO 15552 (DIN ISO 6431)

Kullanıldığı Ürünler / Used Product WAC, WAP, WAHRC



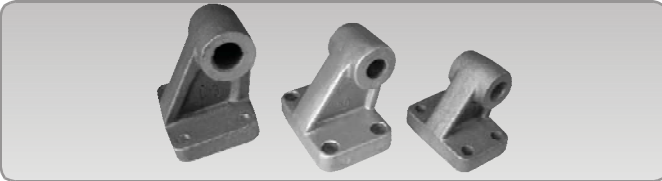
Teknik Çizim / Technical Drawing



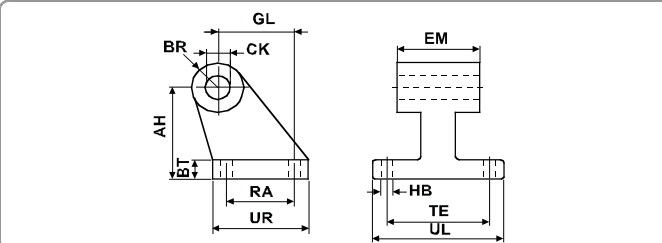
Piston Ø	S	T	DC	DD	DE	DJ	DQ
32	47	32.5	22	9	10	13	25.8
40	53	38	25	12	12	16	27.8
50	65	46.5	27	12	12	17	31.7
63	75	56.5	32	15	16	22	39.7
80	95	72	36	15	16	22	49.7
100	115	89	41	20	20	27	59.7
125	140	110	50	25	25	33	69.7
160	180	140	55	30	30	33.5	89.7
200	220	175	60	30	30	37	89.7

Yer Bağlantı / Clevis Foot Mounting ISO 15552 (DIN ISO 6431)

Kullanıldığı Ürünler / Used Product WAC, WAP, WAHRC



Teknik Çizim / Technical Drawing



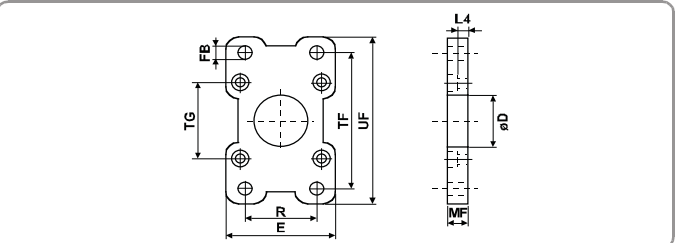
Piston Ø	AH	BR	BT	CK	EM	GL	HB	RA	TE	UL	UR
32	32	10	8	10	26	21	6.5	18	38	51	31
40	36	11	10	12	28	24	6.5	22	41	54	35
50	45	13	12	12	32	33	9	30	50	65	45
63	50	15	12	16	40	37	9	35	52	67	50
80	63	15	14	16	50	47	11	40	66	86	60
100	71	19	15	20	60	55	11	50	76	96	70
125	90	22.5	20	25	70	70	14	60	94	124	90

Flanş Bağlantı / Mounting Flange ISO 15552 (DIN ISO 6431)

Kullanıldığı Ürünler / Used Product WAC, WAP, WAHRC



Teknik Çizim / Technical Drawing



Piston Ø	D	E	FB	L4	MF	R	TF	TG	UF
32	30	45	7	5	10	32	64	32.5	80
40	35	54	9	5	10	36	72	38	90
50	40	65	9	6.5	12	45	90	46.5	110
63	45	76	9	6.5	12	50	100	56.5	120
80	45	94	12	9	16	63	126	72	150
100	55	112	14	9	16	75	150	89	175
125	60	135	16	10.5	20	90	180	110	210