

MODÜLER BASINÇ DÜŞÜRÜCÜ VALFLER MODULAR PRESSURE REDUCING VALVES MPR - 02

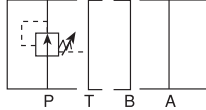


TEKNİK ÖZELLİKLER / TECHNICAL DATA

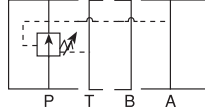
MAKSİMUM ÇALIŞMA BASINCI / MAX. OPERATING PRESSURE
250 KGF/CM² (3600 PSI)

MAKSİMUM AKIŞ / MAX. FLOW
40 LPM (10.6 GPM)

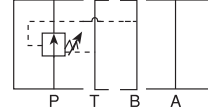
SEMBOLLER / SYMBOLS



MR - 02P



MR - 02A



MR - 02B

DÜŞÜNCELER / REMARKS

- * İYİ SONUÇ ELDE ETMEK İÇİN, İLK KISIM ANA DEVRENİN FARK BASINCININ 10 BAR ÜSTÜNDE OLMASINA DİKKAT EDİNİZ
- * AYAR ARALIĞINDA GÖSTERİLEN MİN. AYAR BASINCI LİMİTİNE DİKKAT EDİNİZ.
- * DEBİYİ AYARLARKEN, DEBİYİ AZALTMAK İÇİN SAAT YÖNÜNDE, ARTTIRMAK İÇİN TERS YÖNDE ÇEVİRİNİZ.

* TO GET GOOD PRESSURE REDUCING FUNCTION, MAKE SURE DIFFERENTIAL PRESSURE OF FIRST SIDE MAIN CIRCUIT PRESSURE MUST BE ABOVE 10 BARS.

* BE AWARE OF THE MIN. ADJUSTING PRESSURE LIMITED IN ADJUSTING RANGE.

* WHEN ADJUST THE FLOW, USE CLOCKWISE TURN TO DECREASE THE FLOW AND USE COUNTER CLOCKWISE TURN TO INCREASE THE FLOW.

SİPARİŞ KODU / ORDERING CODE

MPR -- 02 -- P -- K -- 1 -- 50

DİZAYN NUMARASI / DESIGN NUMBER

BASINÇ AYAR ARALIKLARI / PRESSURE ADJUSTING RANGE

1: 3-35 KGF/CM² (45-500 PSI)

2: 8-70 KGF/CM² (45-500 PSI)

3: 35-160 KGF/CM² (500-2300)

BASINÇ AYARLAYICI KOL TİPİ / ADJUSTING ARM TYPE

K: TOPUZLU EL KUMANDA İLE / WITH HAND KNOB

KOD YOKSA: ALYENLE KUMANDALI / NO CODE: WITHOUT HAND KNOB

İŞ YAPACAK DELİKLER / FUNCTION PORT:

P: P DELİĞİ / P PORT

A: A A DELİĞİ / A PORT

B: B DELİĞİ / B PORT

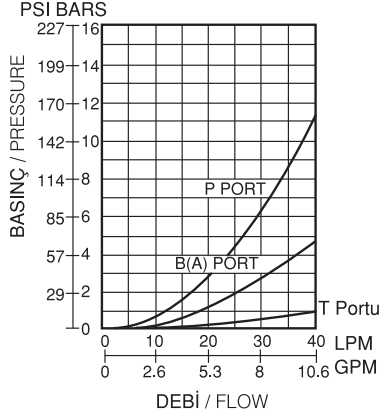
DELİK ÖLÇÜSÜ / PORT SIZE:

02: 1/4"

MPR - 02**ÇALIŞMA EĞRİLERİ / PERFORMANCE CURVES**

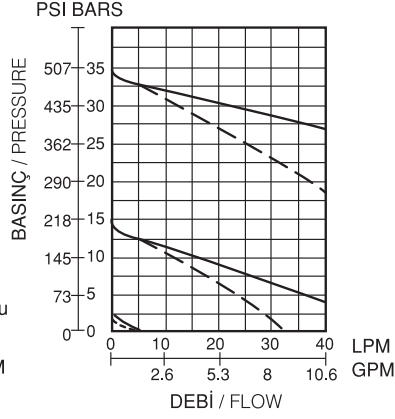
YAĞ ÇALIŞMA ÖLÇÜSÜ (MEASURED AT V) V=35 CST AND T=50°

BASINÇ DÜŞÜMÜ DEBİ
PRESSURE DROP FLOW
MPR - 02P(A,B)



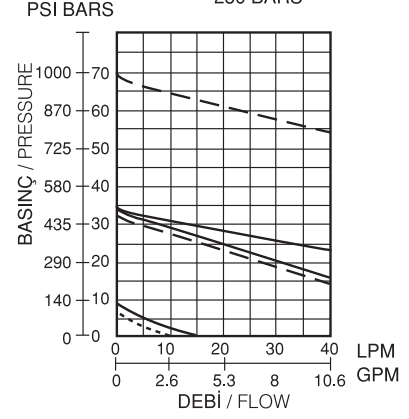
BASINÇ - AKIŞ İLİŞKİSİ
PRESSURE RELATED TO FLOW
MPR - 02P - 03

FIRST PRESSURE — 70 BARS
---- 250 BARS



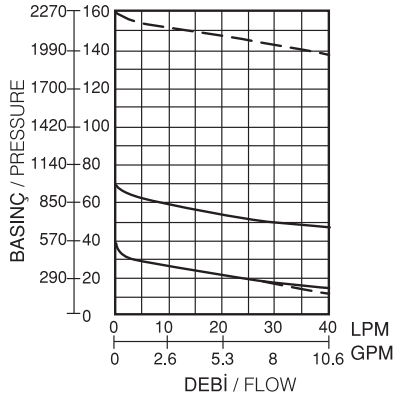
BASINÇ - AKIŞ İLİŞKİSİ
PRESSURE RELATED TO FLOW
MPR - 02P - 01

FIRST PRESSURE — 70 BARS
---- 250 BARS



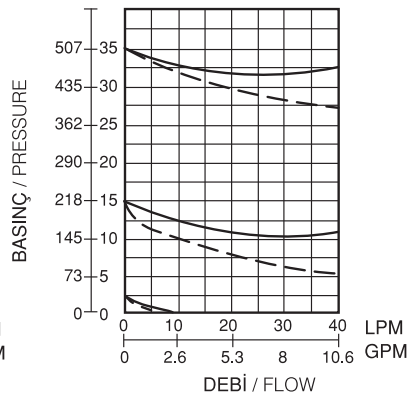
BASINÇ - AKIŞ İLİŞKİSİ
PRESSURE RELATED TO FLOW
MPR - 02P - 2

FIRST PRESSURE — 160 BARS
PSI BARS ---- 250 BARS



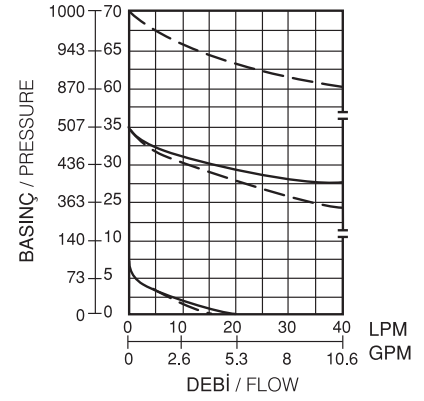
BASINÇ - AKIŞ İLİŞKİSİ
PRESSURE RELATED TO FLOW
MPR - 02A(B) - 3

FIRST PRESSURE — 70 BARS
PSI BARS ---- 250 BARS



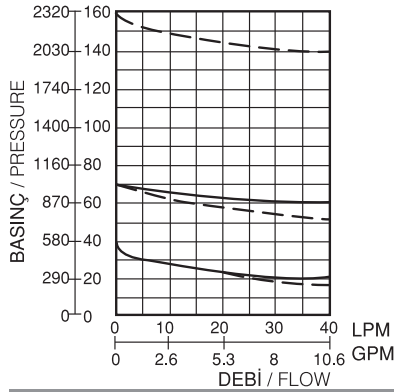
BASINÇ - AKIŞ İLİŞKİSİ
PRESSURE RELATED TO FLOW
MPR - 02A(B) - 1

FIRST PRESSURE — 70 BARS
PSI BARS ---- 250 BARS



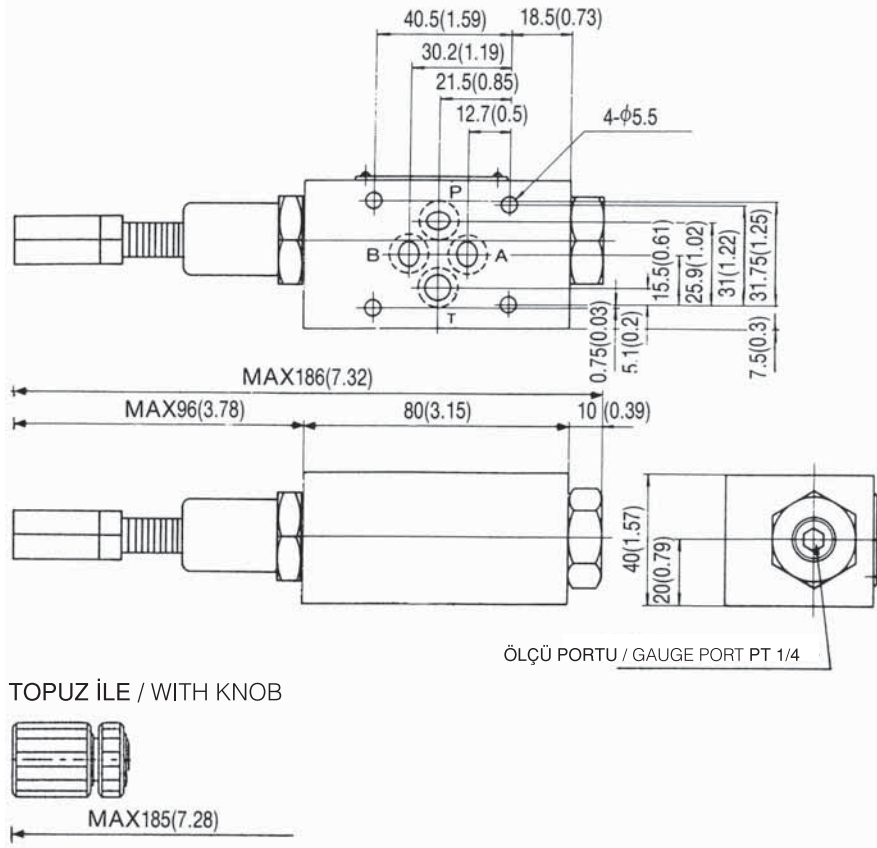
BASINÇ - AKIŞ İLİŞKİSİ
PRESSURE RELATED TO FLOW
MPR - 02A(B) - 2

FIRST PRESSURE — 160 BARS
PSI BARS ---- 250 BARS



MPR - 02**ÖLÇÜLER / DIMENSIONS**

BİRİM / UNIT: MM (INCH)
AĞIRLIK / WEIGHT: 1.3 KGS



MODÜLER BASINÇ DÜŞÜRÜCÜ VALFLER MODULAR PRESSURE REDUCING VALVES MPR - 03

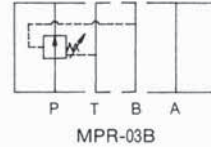


TEKNİK ÖZELLİKLER / TECHNICAL DATA

MAKSİMUM ÇALIŞMA BASINCI
MAX. OPERATING PRESSURE:
250 KGF/CM² (3600 PSI)

MAKSİMUM DEBİ / MAX. FLOW:
70 LPM (10.6 GPM)

SEMBOLLER / SYMBOLS



DÜŞÜNCELER / REMARKS

* İYİ SONUÇLAR ELDE EDEBİLMEK İÇİN, İLK KISIM ANA DEVRENİN FARK BASINCININ 10 BAR ÜSTÜNDE OLMASINA DİKKAT EDİNİZ.

* AYAR ARALIĞINDA GÖSTERİLEN MİN. AYAR BASINCI LİMİTİNE DİKKAT EDİNİZ.

* DEBİYİ AYARLARKEN, DEBİYİ AZALTMAK İÇİN SAAT YÖNÜNDE, ARTTIRMAK İÇİN TERS YÖNDE ÇEVİRİNİZ.

* TO GET GOOD PRESSURE REDUCING FUNCTION, MAKE SURE DIFFERENTIAL PRESSURE OF FIRST SIDE MAIN CIRCUIT PRESSURE MUST BE ABOVE 10 BARS.

* BE AWARE OF THE MIN. ADJUSTING PRESSURE LIMITED IN ADJUSTING RANGE.

* WHEN ADJUST THE FLOW, USE CLOCKWISE TURN TO DECREASE THE FLOW AND USE COUNTER CLOCKWISE TURN TO INCREASE THE FLOW.

SİPARİŞ KODU / ORDERING CODE

MPR -- 03 -- P -- K -- 1 -- 50

DİZAYN NUMARASI / DESIGN NUMBER

BASINÇ AYAR ARALIKLARI / PRESSURE ADJUSTING RANGE

1: 8-70 KGF/CM² (120-1000 PSI)

2: 35-160 KGF/CM² (500-2300 PSI)

3: 70-250 KGF/CM² (1000-3600 PSI)

BASINÇ AYARLAYICI KOL TİPİ / ADJUSTING ARM TYPE:

K: EL TOPUZLU / WITH HAND KNOB

KOD YOKSA / NO CODE: ALLEN AYARLI / WITHOUT HAND KNOB

İŞ YAPACAK DELİKLER / FUNCTION PORT:

P: P DELİĞİ / P PORT

A: A DELİĞİ / A PORT

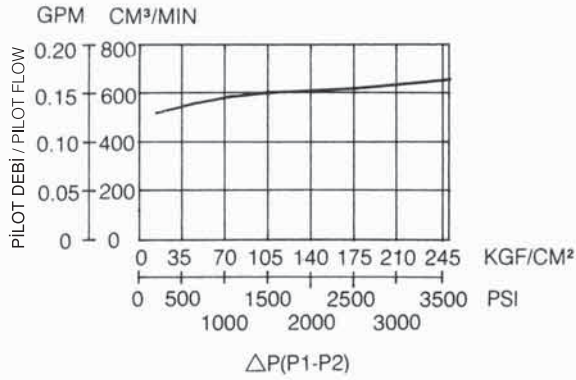
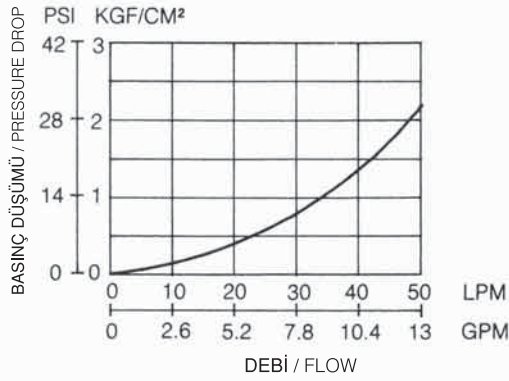
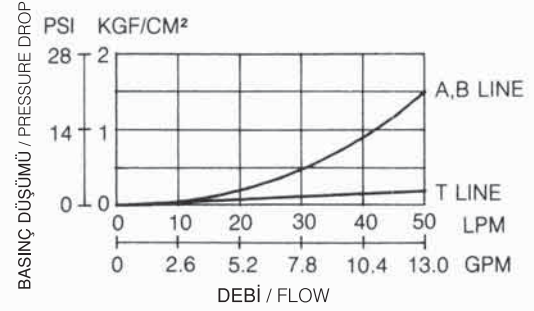
B: B DELİĞİ / B PORT

DELİK ÖLÇÜSÜ / PORT SIZE

03: 3/8"

MPR - 03 SERİLERİ / MPR - 03 SERIES**PERFORMANS EĞRİLERİ / PERFORMANCE CURVES**

YAĞ ÇALIŞMA ÖLÇÜSÜ / MEASURED AT V= 35 CST AND T= 50 °C

PİLOT AKIŞ GRAFİĞİ / PILOT FLOW CHART**SPUL TAM AÇIKKEN BASINÇ DÜŞÜMÜ (P HATTI)
PRESSURE DROP AT SPOOL FULLY OPENED (P LINE)****BASINÇ DÜŞÜMÜ
PRESSURE DROP****ÖLÇÜLER / DIMENSIONS**BİRİM / UNIT: MM (INCH)
AĞIRLIK / WEIGHT: 3.5 KGS