

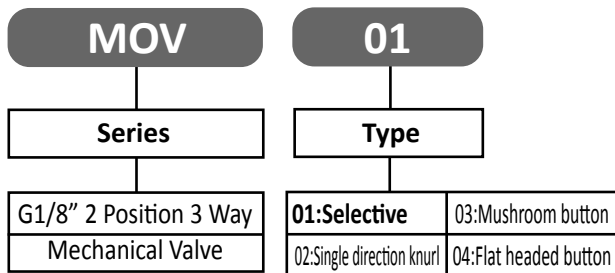
MOV Series Control Valve

Mechanical Valve

Specification:

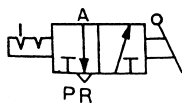
| | |
|-------------------------|----------------------|
| Type | MOV - 01, 02, 03, 04 |
| Port size(G) | 1/8" |
| Fluid | Compressed Air |
| Temperature range | -5-60°C |
| Operating pressure(MPa) | 0.2-0.8 |

How to order:

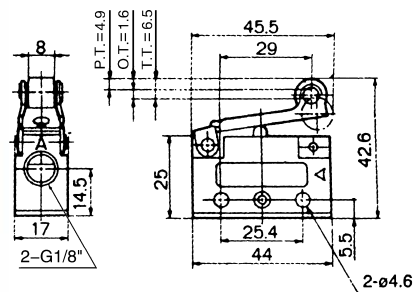
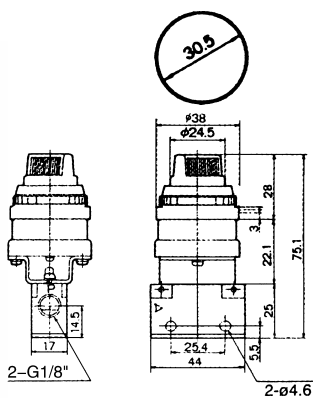
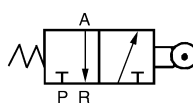


Dimension(mm):

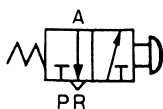
MOV - 01



MOV - 02



MOV - 03



MOV - 04

